

DATASHEET

Ataxin 1 Mouse Monoclonal Antibody(C2538)

CAT. NO. AMA02150

KEY FEATURES

Target	Ataxin 1	Source / Host	Mouse
Reactivity	Human, Mouse	Clonality	Monoclonal
Applications	WB, FC	Conjugation	Unconjugated
Form / Buffer	Mouse IgG1. Liquid in PBS, pH 7.3, 30% glycerol, and 0.01% sodium azide.	Storage	at-20°C

BACKGROUND

Chromatin-binding factor that repress Notch signaling in the absence of Notch intracellular domain by acting as a CBF1 corepressor. Binds to the HEY promoter and might assist, along with NCOR2, RBPJ-mediated repression. Binds RNA in vitro. May be involved in RNA metabolism . In concert with CIC and ATXN1L, involved in brain development .

APPLICATION

To ensure optimal assay performance, AREX recommends conducting reagent titration tailored to each testing system for optimal detection results.

WB	1:500 - 1:1000
FC	1:100 - 1:200

*Results are sample-specific. Please refer to your local assay conditions and test parameters for reference.

PRODUCT OVERVIEW

Description	Mouse monoclonal to Ataxin 1
Specificity	Recognizes endogenous levels of Ataxin 1 protein
Antibody Type	Primary antibody
Immunogen	Recombinant fusion protein of human Ataxin 1 expressed in E. Coli
Purification	This antibody is purified through a protein G column.
Molecular Weight	Predicted: 87 kD; Observed: 100 kD
Form/Buffer	Mouse IgG1. Liquid in PBS, pH 7.3, 30% glycerol, and 0.01% sodium azide.
Alternative Names	ATX1; SCA1; Ataxin-1; Spinocerebellar ataxia type 1 protein
Gene Symbol	ATXN1
Entrez Gene	6310(Human); 25049(Rat)
SwissProt	P54253(Human); P54254(Mouse)

*AREX continuously optimizes our products. Webpage content may not reflect the latest updates. For inquiries, please contact info@arexbio.com or your local distributor.

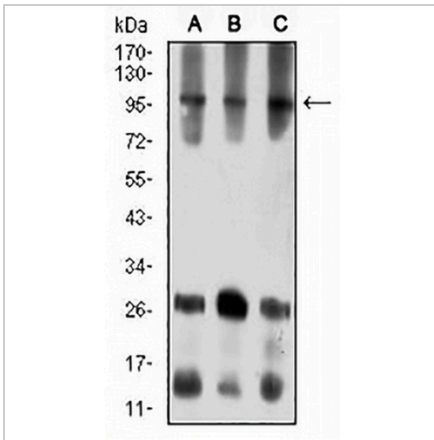
*Clone Number, Reactivity, Source/Host and Clonality can be found in the product name and Key Features section above.

DATASHEET

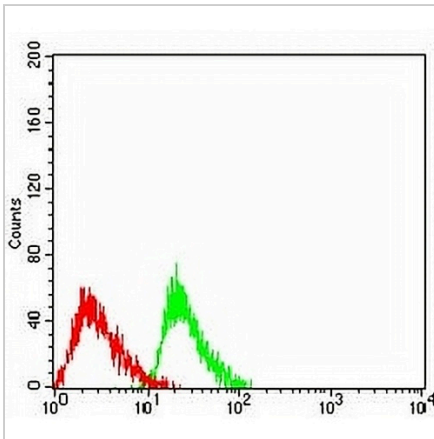
Ataxin 1 Mouse Monoclonal Antibody(C2538)

CAT. NO. AMA02150

DATA



Western blot analysis of Ataxin 1 expression in COS7 (A), NIH/3T3 (B), HL60 (C) whole cell lysates. (Predicted band size: 87 kD; Observed band size: 100 kD)



Flow cytometric analysis of HL60 cells using Anti-Ataxin 1 Antibody (green) and negative control (red).

STORAGE

Store at 4°C short term. For long term storage, store at -20°C, avoiding freeze/thaw cycles.

NOTE

For Research Use Only. Not for diagnostic, therapeutics, prophylactic or in vivo use.