

## DATASHEET

# Ataxin 1 Mouse Monoclonal Antibody(C2539)

CAT. NO. AMA02151

### KEY FEATURES

Target	Ataxin 1	Source / Host	Mouse
Reactivity	Human, Mouse, Rat, Monkey	Clonality	Monoclonal
Applications	WB, IHC, FC	Conjugation	Unconjugated
Form / Buffer	Mouse IgG1. Liquid in PBS, pH 7.3, 30% glycerol, and 0.01% sodium azide.	Storage	at-20°C

### BACKGROUND

Chromatin-binding factor that repress Notch signaling in the absence of Notch intracellular domain by acting as a CBF1 corepressor. Binds to the HEY promoter and might assist, along with NCOR2, RBPJ-mediated repression. Binds RNA in vitro. May be involved in RNA metabolism . In concert with CIC and ATXN1L, involved in brain development .

### APPLICATION

To ensure optimal assay performance, AREX recommends conducting reagent titration tailored to each testing system for optimal detection results.

WB	1:500 - 1:1000
IHC	1:100 - 1:500
FC	1:100 - 1:200

\*Results are sample-specific. Please refer to your local assay conditions and test parameters for reference.

### PRODUCT OVERVIEW

Description	Mouse monoclonal to Ataxin 1
Specificity	Recognizes endogenous levels of Ataxin 1 protein
Antibody Type	Primary antibody
Immunogen	Recombinant fusion protein of human Ataxin 1 expressed in E. Coli
Purification	This antibody is purified through a protein G column.
Molecular Weight	Predicted: 87 kD; Observed: 100 kD
Form/Buffer	Mouse IgG1. Liquid in PBS, pH 7.3, 30% glycerol, and 0.01% sodium azide.
Alternative Names	ATX1; SCA1; Ataxin-1; Spinocerebellar ataxia type 1 protein
Gene Symbol	ATXN1
Entrez Gene	6310(Human); 20238(Mouse); 25049(Rat)
SwissProt	P54253(Human); P54254(Mouse); Q63540(Rat)

\*AREX continuously optimizes our products. Webpage content may not reflect the latest updates. For inquiries, please contact [info@arexbio.com](mailto:info@arexbio.com) or your local distributor.

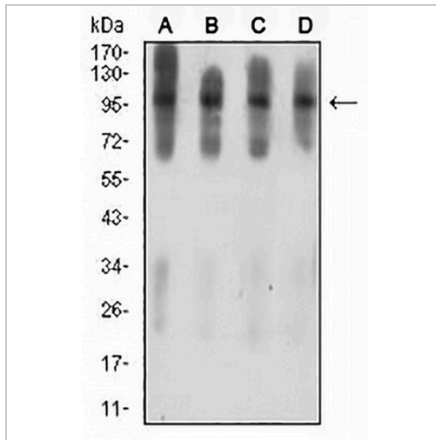
\*Clone Number, Reactivity, Source/Host and Clonality can be found in the product name and Key Features section above.

**DATASHEET**

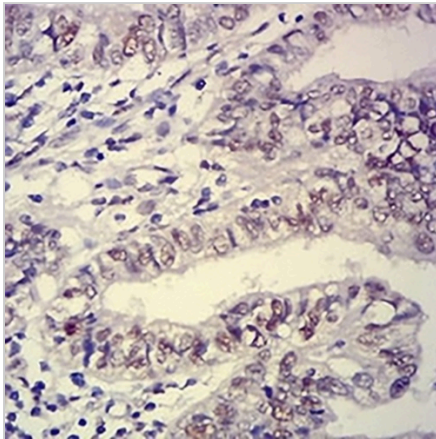
**Ataxin 1 Mouse Monoclonal Antibody(C2539)**

CAT. NO. AMA02151

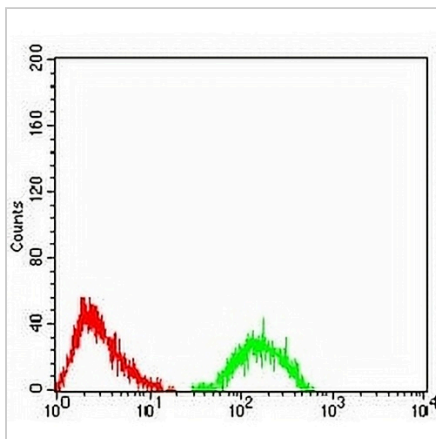
**DATA**



Western blot analysis of Ataxin 1 expression in C6 (A), COS7 (B), NIH/3T3 (C), HL60 (D) whole cell lysates. (Predicted band size: 87 kD; Observed band size: 100 kD kD)



Immunohistochemical analysis of Ataxin 1 staining in human endometrial cancer formalin fixed paraffin embedded tissue section. The section was pre-treated using heat mediated antigen retrieval with sodium citrate buffer (pH 6.0). The section was then incubated with the antibody at room temperature and detected using an HRP conjugated compact polymer system. DAB was used as the chromogen. The section was then counterstained with haematoxylin and mounted with DPX.



Flow cytometric analysis of Jurkat cells using Anti-Ataxin 1 Antibody (green) and negative control (red).

**STORAGE**

Store at 4°C short term. For long term storage, store at -20°C, avoiding freeze/thaw cycles.

**NOTE**

For Research Use Only. Not for diagnostic, therapeutics, prophylactic or in vivo use.