

DATASHEET

BAD Mouse Monoclonal Antibody(C2549)

CAT. NO. AMA02161

KEY FEATURES

Target	BAD	Source / Host	Mouse
Reactivity	Human	Clonality	Monoclonal
Applications	WB, FC	Conjugation	Unconjugated
Form / Buffer	Mouse IgG1. Liquid in PBS, pH 7.3, 30% glycerol, and 0.01% sodium azide.	Storage	at-20°C

BACKGROUND

Promotes cell death. Successfully competes for the binding to Bcl-X(L), Bcl-2 and Bcl-W, thereby affecting the level of heterodimerization of these proteins with BAX. Can reverse the death repressor activity of Bcl-X(L), but not that of Bcl-2. Appears to act as a link between growth factor receptor signaling and the apoptotic pathways.

APPLICATION

To ensure optimal assay performance, AREX recommends conducting reagent titration tailored to each testing system for optimal detection results.

WB	1:500 - 1:1000
FC	1:100 - 1:200

*Results are sample-specific. Please refer to your local assay conditions and test parameters for reference.

PRODUCT OVERVIEW

Description	Mouse monoclonal to BAD
Specificity	Recognizes endogenous levels of BAD protein
Antibody Type	Primary antibody
Immunogen	Recombinant fusion protein of human BAD expressed in E. Coli
Purification	This antibody is purified through a protein G column.
Molecular Weight	Predicted: 18 kD; Observed: 18 kD
Form/Buffer	Mouse IgG1. Liquid in PBS, pH 7.3, 30% glycerol, and 0.01% sodium azide.
Alternative Names	BBC6; BCL2L8; Bcl2 antagonist of cell death; BAD; Bcl-2-binding component 6; Bcl-2-like protein 8; Bcl2-L-8; Bcl-XL/Bcl-2-associated death promoter
Gene Symbol	BAD
Entrez Gene	572(Human)
SwissProt	Q92934(Human)

*AREX continuously optimizes our products. Webpage content may not reflect the latest updates. For inquiries, please contact info@arexbio.com or your local distributor.

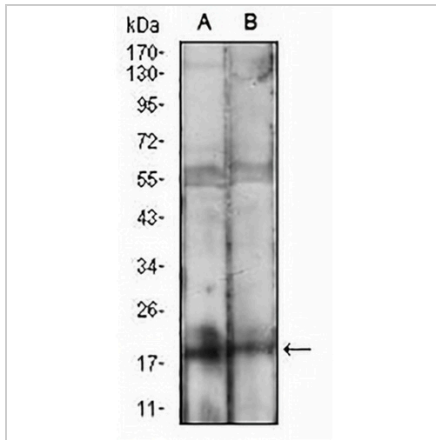
*Clone Number, Reactivity, Source/Host and Clonality can be found in the product name and Key Features section above.

DATASHEET

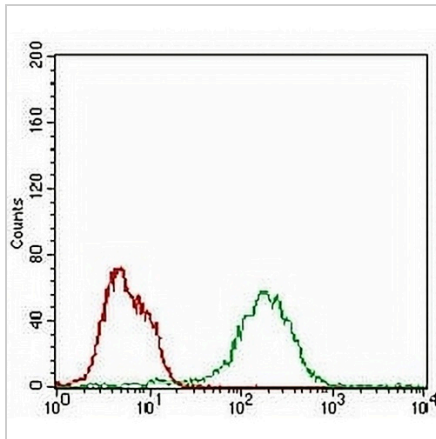
BAD Mouse Monoclonal Antibody(C2549)

CAT. NO. AMA02161

DATA



Western blot analysis of BAD expression in MCF7 (A), HEK293 (B) whole cell lysates. (Predicted band size: 18 kD; Observed band size: 18 kD)



Flow cytometric analysis of MCF7 cells using Anti-BAD Antibody (green) and negative control (red).

STORAGE

Store at 4°C short term. For long term storage, store at -20°C, avoiding freeze/thaw cycles.

NOTE

For Research Use Only. Not for diagnostic, therapeutics, prophylactic or in vivo use.