

DATASHEET

BCL2 Mouse Monoclonal Antibody(C2551)

CAT. NO. AMA02163

KEY FEATURES

| | | | |
|---------------|--|---------------|--------------|
| Target | BCL2 | Source / Host | Mouse |
| Reactivity | Human, Rat | Clonality | Monoclonal |
| Applications | WB, FC | Conjugation | Unconjugated |
| Form / Buffer | Mouse IgG1. Liquid in PBS, pH 7.3, 30% glycerol, and 0.01% sodium azide. | Storage | at-20°C |

BACKGROUND

Suppresses apoptosis in a variety of cell systems including factor-dependent lymphohematopoietic and neural cells . Regulates cell death by controlling the mitochondrial membrane permeability . Appears to function in a feedback loop system with caspases . Inhibits caspase activity either by preventing the release of cytochrome c from the mitochondria and/or by binding to the apoptosis-activating factor (APAF-1) . Also acts as an inhibitor of autophagy: interacts with BECN1 and AMBRA1 during non-starvation conditions and inhibits their autophagy function . May attenuate inflammation by impairing NLRP1-inflammasome activation, hence CASP1 activation and IL1B release .

APPLICATION

To ensure optimal assay performance, AREX recommends conducting reagent titration tailored to each testing system for optimal detection results.

| | |
|----|----------------|
| WB | 1:500 - 1:1000 |
| FC | 1:100 - 1:200 |

*Results are sample-specific. Please refer to your local assay conditions and test parameters for reference.

PRODUCT OVERVIEW

| | |
|-------------------|--|
| Description | Mouse monoclonal to BCL2 |
| Specificity | Recognizes endogenous levels of BCL2 protein |
| Antibody Type | Primary antibody |
| Immunogen | Recombinant fusion protein of human BCL2 expressed in E. Coli |
| Purification | This antibody is purified through a protein G column. |
| Molecular Weight | Predicted: 26 kD; Observed: 95 kD kD |
| Form/Buffer | Mouse IgG1. Liquid in PBS, pH 7.3, 30% glycerol, and 0.01% sodium azide. |
| Alternative Names | Apoptosis regulator Bcl-2 |
| Gene Symbol | BCL2 |
| Entrez Gene | 596(Human); 24224(Rat) |
| SwissProt | P10415(Human); P49950(Rat) |

*AREX continuously optimizes our products. Webpage content may not reflect the latest updates. For inquiries, please contact info@arexbio.com or your local distributor.

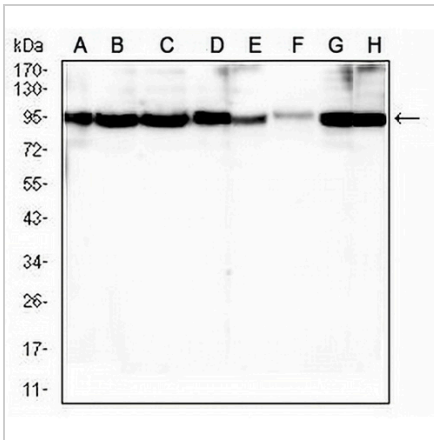
*Clone Number, Reactivity, Source/Host and Clonality can be found in the product name and Key Features section above.

DATASHEET

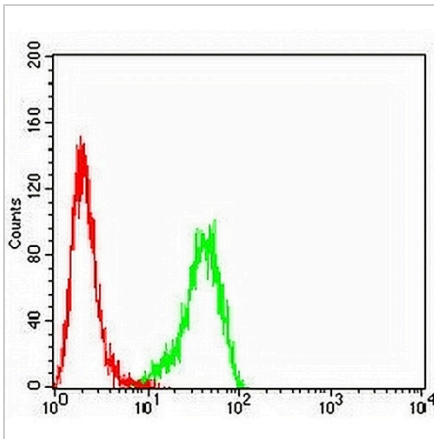
BCL2 Mouse Monoclonal Antibody(C2551)

CAT. NO. AMA02163

DATA



Western blot analysis of BCL2 expression in Raji (A), MCF7 (B), Jurkat (C), A549 (D), HEK293 (E), T47D (F), HeLa (G), C6 (H) whole cell lysates. (Predicted band size: 26 kD; Observed band size: 95 kD)



Flow cytometric analysis of THP1 cells using Anti-BCL2 Antibody (green) and negative control (red).

STORAGE

Store at 4°C short term. For long term storage, store at -20°C, avoiding freeze/thaw cycles.

NOTE

For Research Use Only. Not for diagnostic, therapeutics, prophylactic or in vivo use.