

**DATASHEET**

**BCR Mouse Monoclonal Antibody(C2553)**

CAT. NO. AMA02165

**KEY FEATURES**

Target	BCR	Source / Host	Mouse
Reactivity	Human	Clonality	Monoclonal
Applications	WB, FC	Conjugation	Unconjugated
Form / Buffer	Mouse IgG1. Liquid in PBS, pH 7.3, 30% glycerol, and 0.01% sodium azide.	Storage	at-20°C

**BACKGROUND**

Protein with a unique structure having two opposing regulatory activities toward small GTP-binding proteins. The C-terminus is a GTPase-activating protein (GAP) domain which stimulates GTP hydrolysis by RAC1, RAC2 and CDC42. Accelerates the intrinsic rate of GTP hydrolysis of RAC1 or CDC42, leading to down-regulation of the active GTP-bound form domain which stimulates GTP hydrolysis by RAC1, RAC2 and CDC42. Accelerates the intrinsic rate of GTP hydrolysis of RAC1 or CDC42, leading to down-regulation of the active GTP-bound form . The central Dbl homology (DH) domain functions as guanine nucleotide exchange factor (GEF) that modulates the GTPases CDC42, RHOA and RAC1. Promotes the conversion of CDC42, RHOA and RAC1 from the GDP-bound to the GTP-bound form .

**APPLICATION**

To ensure optimal assay performance, AREX recommends conducting reagent titration tailored to each testing system for optimal detection results.

WB	1:500 - 1:1000
FC	1:100 - 1:200

\*Results are sample-specific. Please refer to your local assay conditions and test parameters for reference.

**PRODUCT OVERVIEW**

Description	Mouse monoclonal to BCR
Specificity	Recognizes endogenous levels of BCR protein
Antibody Type	Primary antibody
Immunogen	Recombinant fusion protein of human BCR expressed in E. Coli
Purification	This antibody is purified through a protein G column.
Molecular Weight	Predicted: 143 kD; Observed: 135 kD kD
Form/Buffer	Mouse IgG1. Liquid in PBS, pH 7.3, 30% glycerol, and 0.01% sodium azide.
Alternative Names	BCR1; D22S11; Breakpoint cluster region protein; Renal carcinoma antigen NY-REN-26
Gene Symbol	BCR
Entrez Gene	613(Human)
SwissProt	P11274(Human)

\*AREX continuously optimizes our products. Webpage content may not reflect the latest updates. For inquiries, please contact [info@arexbio.com](mailto:info@arexbio.com) or your local distributor.

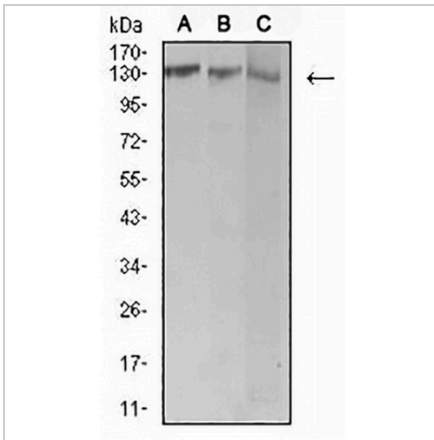
\*Clone Number, Reactivity, Source/Host and Clonality can be found in the product name and Key Features section above.

**DATASHEET**

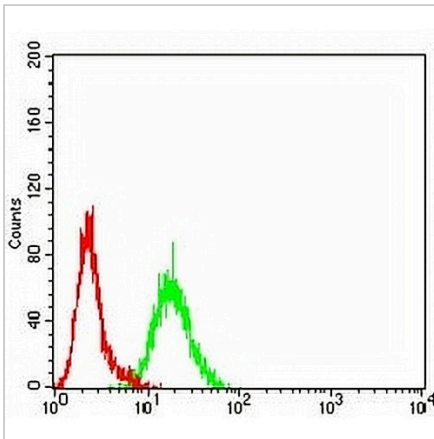
**BCR Mouse Monoclonal Antibody(C2553)**

CAT. NO. AMA02165

**DATA**



Western blot analysis of BCR expression in Jurkat (A), HeLa (B), Ramos (C) whole cell lysates. (Predicted band size: 143 kD; Observed band size: 135 kD)



Flow cytometric analysis of K562 cells using Anti-BCR Antibody (green) and negative control (red).

**STORAGE**

Store at 4°C short term. For long term storage, store at -20°C, avoiding freeze/thaw cycles.

**NOTE**

For Research Use Only. Not for diagnostic, therapeutics, prophylactic or in vivo use.