

**DATASHEET**

**Amphiphysin 2 Mouse Monoclonal Antibody(C2555)**

CAT. NO. AMA02167

**KEY FEATURES**

Target	Amphiphysin 2	Source / Host	Mouse
Reactivity	Human, Mouse	Clonality	Monoclonal
Applications	WB, IHC, FC	Conjugation	Unconjugated
Form / Buffer	Mouse IgG2b. Liquid in PBS, pH 7.3, 30% glycerol, and 0.01% sodium azide.	Storage	at-20°C

**BACKGROUND**

Is a key player in the control of plasma membrane curvature, membrane shaping and membrane remodeling. Required in muscle cells for the formation of T-tubules, tubular invaginations of the plasma membrane that function in depolarization-contraction coupling . Is a negative regulator of endocytosis . Is also involved in the regulation of intracellular vesicles sorting, modulation of BACE1 trafficking and the control of amyloid-beta production . In neuronal circuits, endocytosis regulation may influence the internalization of PHF-tau aggregates . May be involved in the regulation of MYC activity and the control cell proliferation . Has actin bundling activity and stabilizes actin filaments against depolymerization in vitro .

**APPLICATION**

To ensure optimal assay performance, AREX recommends conducting reagent titration tailored to each testing system for optimal detection results.

WB	1:500 - 1:1000
IHC	1:100 - 1:500
FC	1:100 - 1:200

\*Results are sample-specific. Please refer to your local assay conditions and test parameters for reference.

**PRODUCT OVERVIEW**

Description	Mouse monoclonal to Amphiphysin 2
Specificity	Recognizes endogenous levels of Amphiphysin 2 protein
Antibody Type	Primary antibody
Immunogen	Recombinant fusion protein of human Amphiphysin 2 expressed in E. Coli
Purification	This antibody is purified through a protein G column.
Molecular Weight	Predicted: 65 kD; Observed: 55 kD
Form/Buffer	Mouse IgG2b. Liquid in PBS, pH 7.3, 30% glycerol, and 0.01% sodium azide.
Alternative Names	AMPHL; Myc box-dependent-interacting protein 1; Amphiphysin II; Amphiphysin-like protein; Box-dependent myc-interacting protein 1; Bridging integrator 1
Gene Symbol	BIN1
Entrez Gene	274(Human); 117028(Rat)
SwissProt	O00499(Human); O08539(Mouse)

\*AREX continuously optimizes our products. Webpage content may not reflect the latest updates. For inquiries, please contact [info@arexbio.com](mailto:info@arexbio.com) or your local distributor.

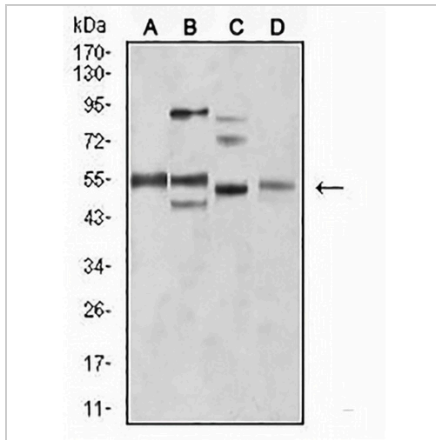
\*Clone Number, Reactivity, Source/Host and Clonality can be found in the product name and Key Features section above.

**DATASHEET**

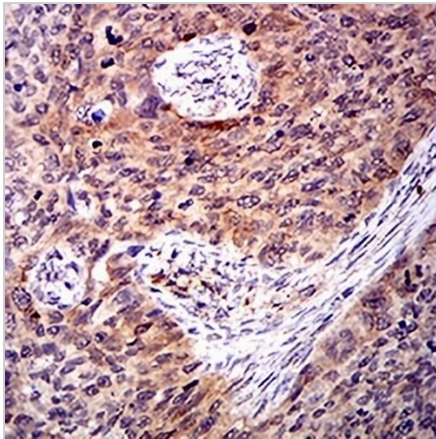
**Amphiphysin 2 Mouse Monoclonal Antibody(C2555)**

CAT. NO. AMA02167

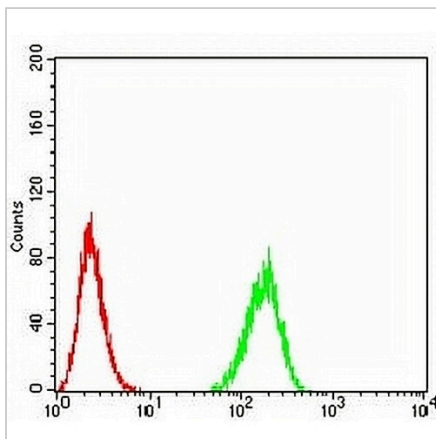
**DATA**



Western blot analysis of Amphiphysin 2 expression in C2C12 (A), A431 (B), HEK293 (C), MCF7 (D) whole cell lysates. (Predicted band size: 65 kD; Observed band size: 55 kD kD)



Immunohistochemical analysis of Amphiphysin 2 staining in human cervical cancer formalin fixed paraffin embedded tissue section. The section was pre-treated using heat mediated antigen retrieval with sodium citrate buffer (pH 6.0). The section was then incubated with the antibody at room temperature and detected using an HRP conjugated compact polymer system. DAB was used as the chromogen. The section was then counterstained with haematoxylin and mounted with DPX.



Flow cytometric analysis of HeLa cells using Anti-Amphiphysin 2 Antibody (green) and negative control (red).

**STORAGE**

Store at 4°C short term. For long term storage, store at -20°C, avoiding freeze/thaw cycles.

**NOTE**

For Research Use Only. Not for diagnostic, therapeutics, prophylactic or in vivo use.