

DATASHEET

LPLUNC1 Mouse Monoclonal Antibody(C2558)

CAT. NO. AMA02170

KEY FEATURES

Target	LPLUNC1	Source / Host	Mouse
Reactivity	Mouse	Clonality	Monoclonal
Applications	WB	Conjugation	Unconjugated
Form / Buffer	Mouse IgG1. Liquid in PBS, pH 7.3, 30% glycerol, and 0.01% sodium azide.	Storage	at-20°C

BACKGROUND

LPLUNC1 (long palate, lung and nasal epithelium clone 1; also known as BPIFB1) is a secreted protein expressed in upper respiratory and oral epithelia, with roles in innate mucosal immunity and host defense. LPLUNC1 has been implicated in nasopharyngeal carcinoma as a candidate tumor suppressor. Anti-LPLUNC1 antibodies are used in IHC, WB, and IF.

APPLICATION

To ensure optimal assay performance, AREX recommends conducting reagent titration tailored to each testing system for optimal detection results.

WB	1:500 - 1:1000
----	----------------

*Results are sample-specific. Please refer to your local assay conditions and test parameters for reference.

PRODUCT OVERVIEW

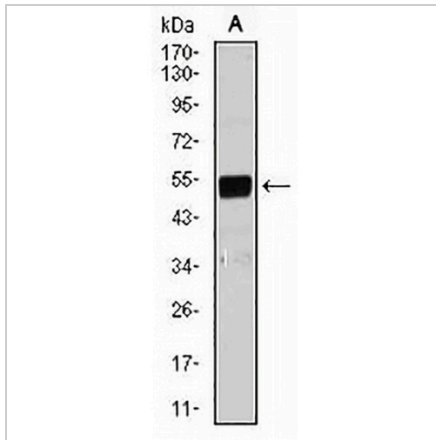
Description	Mouse monoclonal to LPLUNC1
Specificity	Recognizes endogenous levels of LPLUNC1 protein
Antibody Type	Primary antibody
Immunogen	Recombinant fusion protein of mouse LPLUNC1 expressed in E. Coli
Purification	This antibody is purified through a protein G column.
Molecular Weight	Predicted: 52 kD; Observed: 52 kD
Form/Buffer	Mouse IgG1. Liquid in PBS, pH 7.3, 30% glycerol, and 0.01% sodium azide.
Alternative Names	C20orf114; LPLUNC1; BPI fold-containing family B member 1; Long palate lung and nasal epithelium carcinoma-associated protein 1; Von Ebner minor salivary gland protein; VEMSGP
Gene Symbol	BPIFB1
Entrez Gene	228801(Mouse)
SwissProt	Q61114(Mouse)

*AREX continuously optimizes our products. Webpage content may not reflect the latest updates. For inquiries, please contact info@arexbio.com or your local distributor.

*Clone Number, Reactivity, Source/Host and Clonality can be found in the product name and Key Features section above.

DATASHEET**LPLUNC1 Mouse Monoclonal Antibody(C2558)**

CAT. NO. AMA02170

DATA

Western blot analysis of LPLUNC1 expression in NIH3T3 (A) whole cell lysates. (Predicted band size: 52 kD; Observed band size: 52 kD)

STORAGE

Store at 4°C short term. For long term storage, store at -20°C, avoiding freeze/thaw cycles.

NOTE

For Research Use Only. Not for diagnostic, therapeutics, prophylactic or in vivo use.