

## DATASHEET

# B-RAF Mouse Monoclonal Antibody(C2560)

CAT. NO. AMA02172

### KEY FEATURES

Target	B-RAF	Source / Host	Mouse
Reactivity	Human, Mouse, Monkey	Clonality	Monoclonal
Applications	WB, IHC, FC	Conjugation	Unconjugated
Form / Buffer	Mouse IgG1. Liquid in PBS, pH 7.3, 30% glycerol, and 0.01% sodium azide.	Storage	at-20°C

### BACKGROUND

Protein kinase involved in the transduction of mitogenic signals from the cell membrane to the nucleus (Probable). Phosphorylates MAP2K1, and thereby activates the MAP kinase signal transduction pathway . Phosphorylates MAP2K1, and thereby activates the MAP kinase signal transduction pathway . Phosphorylates PFKFB2 . May play a role in the postsynaptic responses of hippocampal neurons .

### APPLICATION

To ensure optimal assay performance, AREX recommends conducting reagent titration tailored to each testing system for optimal detection results.

WB	1:500 - 1:1000
IHC	1:100 - 1:500
FC	1:100 - 1:200

\*Results are sample-specific. Please refer to your local assay conditions and test parameters for reference.

### PRODUCT OVERVIEW

Description	Mouse monoclonal to B-RAF
Specificity	Recognizes endogenous levels of B-RAF protein
Antibody Type	Primary antibody
Immunogen	Recombinant fusion protein of human B-RAF expressed in HEK293
Purification	This antibody is purified through a protein G column.
Molecular Weight	Predicted: 84 kD; Observed: 95 kD kD
Form/Buffer	Mouse IgG1. Liquid in PBS, pH 7.3, 30% glycerol, and 0.01% sodium azide.
Alternative Names	BRAF1; RAFB1; Serine/threonine-protein kinase B-raf; Proto-oncogene B-Raf; p94; v-Raf murine sarcoma viral oncogene homolog B1
Gene Symbol	BRAF
Entrez Gene	673(Human)
SwissProt	P15056(Human); P28028(Mouse)

\*AREX continuously optimizes our products. Webpage content may not reflect the latest updates. For inquiries, please contact [info@arexbio.com](mailto:info@arexbio.com) or your local distributor.

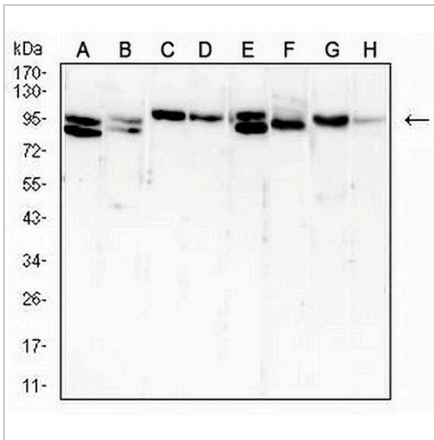
\*Clone Number, Reactivity, Source/Host and Clonality can be found in the product name and Key Features section above.

**DATASHEET**

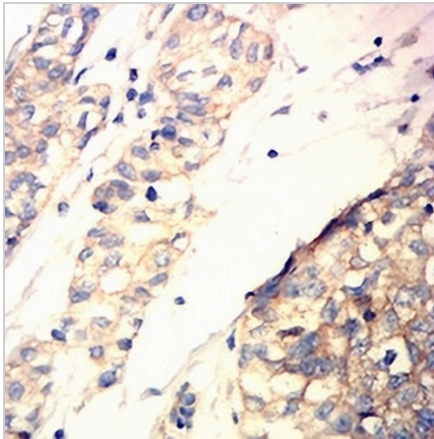
**B-RAF Mouse Monoclonal Antibody(C2560)**

CAT. NO. AMA02172

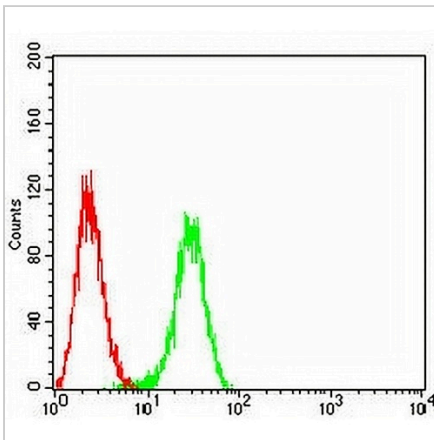
**DATA**



Western blot analysis of B-RAF expression in Hela (A), HT29 (B), MOLT4 (C), T47D (D), HePG2 (E), NIH/3T3 (F), PC12 (G), COS7 (H) whole cell lysates. (Predicted band size: 84 kD; Observed band size: 95 kD)



Immunohistochemical analysis of B-RAF staining in human bladder cancer formalin fixed paraffin embedded tissue section. The section was pre-treated using heat mediated antigen retrieval with sodium citrate buffer (pH 6.0). The section was then incubated with the antibody at room temperature and detected using an HRP conjugated compact polymer system. DAB was used as the chromogen. The section was then counterstained with haematoxylin and mounted with DPX.



Flow cytometric analysis of BEL7402 cells using Anti-B-RAF Antibody (green) and negative control (red).

**STORAGE**

Store at 4°C short term. For long term storage, store at -20°C, avoiding freeze/thaw cycles.

**NOTE**

For Research Use Only. Not for diagnostic, therapeutics, prophylactic or in vivo use.