

DATASHEET

CD157 Mouse Monoclonal Antibody(C2562)

CAT. NO. AMA02174

KEY FEATURES

Target	CD157	Source / Host	Mouse
Reactivity	Human, Mouse, Rat	Clonality	Monoclonal
Applications	WB, IHC, FC	Conjugation	Unconjugated
Form / Buffer	Mouse IgG2b. Liquid in PBS, pH 7.3, 30% glycerol, and 0.01% sodium azide.	Storage	at-20°C

BACKGROUND

Catalyzes both the synthesis of cyclic ADP-beta-D-ribose (cADPR) from NAD(+), and its hydrolysis to ADP-D-ribose (ADPR) from NAD(+), and its hydrolysis to ADP-D-ribose (ADPR) . Cyclic ADPR is known to serve as an endogenous second messenger that elicits calcium release from intracellular stores, and thus regulates the mobilization of intracellular calcium (Probable). May be involved in pre-B-cell growth (Probable).

APPLICATION

To ensure optimal assay performance, AREX recommends conducting reagent titration tailored to each testing system for optimal detection results.

WB	1:500 - 1:1000
IHC	1:100 - 1:500
FC	1:100 - 1:200

*Results are sample-specific. Please refer to your local assay conditions and test parameters for reference.

PRODUCT OVERVIEW

Description	Mouse monoclonal to CD157
Specificity	Recognizes endogenous levels of CD157 protein
Antibody Type	Primary antibody
Immunogen	Recombinant fusion protein of human CD157 expressed in E. Coli
Purification	This antibody is purified through a protein G column.
Molecular Weight	Predicted: 36 kD; Observed: 31 kD kD
Form/Buffer	Mouse IgG2b. Liquid in PBS, pH 7.3, 30% glycerol, and 0.01% sodium azide.
Alternative Names	ADP-ribosyl cyclase/cyclIC, ADP-ribose hydrolase 2; ADP-ribosyl cyclase 2; Bone marrow stromal antigen 1; BST-1; CyclIC, ADP-ribose hydrolase 2; cADPr hydrolase 2; CD157
Gene Symbol	BST1
Entrez Gene	683(Human); 12182(Mouse); 81506(Rat)
SwissProt	Q10588(Human); Q64277(Mouse); Q63072(Rat)

*AREX continuously optimizes our products. Webpage content may not reflect the latest updates. For inquiries, please contact info@arexbio.com or your local distributor.

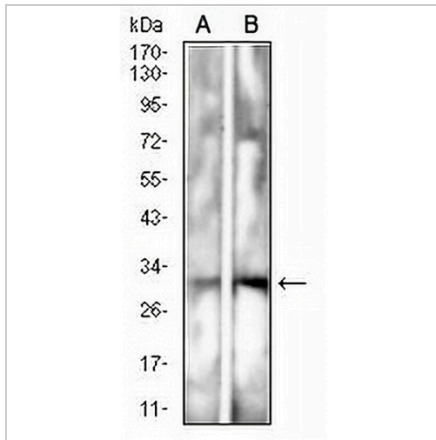
*Clone Number, Reactivity, Source/Host and Clonality can be found in the product name and Key Features section above.

DATASHEET

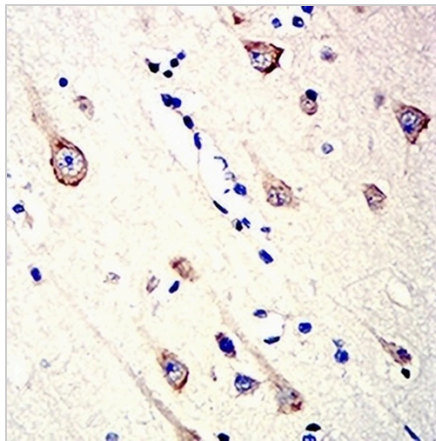
CD157 Mouse Monoclonal Antibody(C2562)

CAT. NO. AMA02174

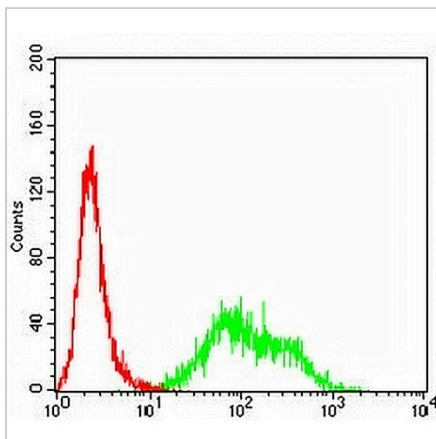
DATA



Western blot analysis of CD157 expression in rat spleen (A), mouse spleen (B) whole cell lysates. (Predicted band size: 36 kD; Observed band size: 31 kD)



Immunohistochemical analysis of CD157 staining in human brain formalin fixed paraffin embedded tissue section. The section was pre-treated using heat mediated antigen retrieval with sodium citrate buffer (pH 6.0). The section was then incubated with the antibody at room temperature and detected using an HRP conjugated compact polymer system. DAB was used as the chromogen. The section was then counterstained with haematoxylin and mounted with DPX.



Flow cytometric analysis of HL60 cells using Anti-CD157 Antibody (green) and negative control (red).

STORAGE

Store at 4°C short term. For long term storage, store at -20°C, avoiding freeze/thaw cycles.

NOTE

For Research Use Only. Not for diagnostic, therapeutics, prophylactic or in vivo use.