

DATASHEET

Calretinin Mouse Monoclonal Antibody(C2571)

CAT. NO. AMA02183

KEY FEATURES

Target	Calretinin	Source / Host	Mouse
Reactivity	Human, Monkey	Clonality	Monoclonal
Applications	WB, FC	Conjugation	Unconjugated
Form / Buffer	Mouse IgG1. Liquid in PBS, pH 7.3, 30% glycerol, and 0.01% sodium azide.	Storage	at-20°C

BACKGROUND

Calcium-binding protein involved in calcium homeostasis and signal transduction. It plays a critical role in buffering intracellular calcium levels and modulating calcium-dependent signaling pathways . Predominantly expressed in specific neuronal populations, influences synaptic plasticity and neuronal excitability, contributing to learning and memory . During embryonic development, it facilitates neuronal differentiation and maturation .

APPLICATION

To ensure optimal assay performance, AREX recommends conducting reagent titration tailored to each testing system for optimal detection results.

WB	1:500 - 1:1000
FC	1:100 - 1:200

*Results are sample-specific. Please refer to your local assay conditions and test parameters for reference.

PRODUCT OVERVIEW

Description	Mouse monoclonal to Calretinin
Specificity	Recognizes endogenous levels of Calretinin protein
Antibody Type	Primary antibody
Immunogen	Recombinant fusion protein of human Calretinin expressed in E. Coli
Purification	This antibody is purified through a protein G column.
Molecular Weight	Predicted: 32 kD; Observed: 30 kD
Form/Buffer	Mouse IgG1. Liquid in PBS, pH 7.3, 30% glycerol, and 0.01% sodium azide.
Alternative Names	CAB29; Calretinin; CR; 29 kDa calbindin
Gene Symbol	CALB2
Entrez Gene	794(Human)
SwissProt	P22676(Human)

*AREX continuously optimizes our products. Webpage content may not reflect the latest updates. For inquiries, please contact info@arexbio.com or your local distributor.

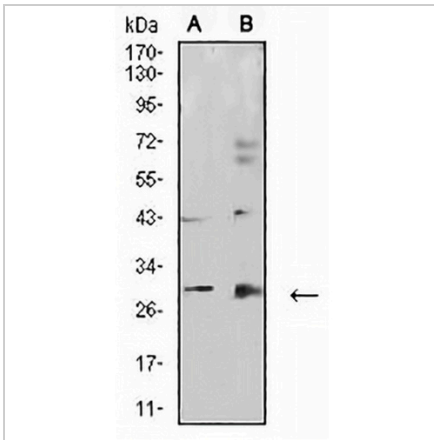
*Clone Number, Reactivity, Source/Host and Clonality can be found in the product name and Key Features section above.

DATASHEET

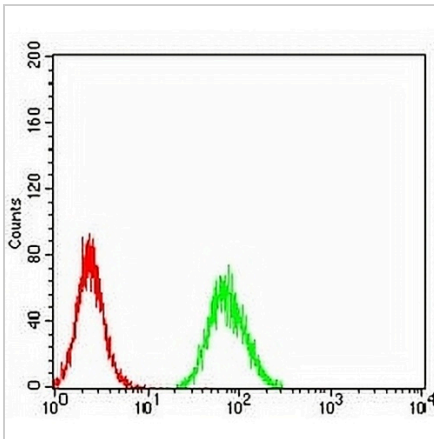
Calretinin Mouse Monoclonal Antibody(C2571)

CAT. NO. AMA02183

DATA



Western blot analysis of Calretinin expression in HepG2 (A), COS7 (B) whole cell lysates. (Predicted band size: 32 kD; Observed band size: 30 kD)



Flow cytometric analysis of HeLa cells using Anti-Calretinin Antibody (green) and negative control (red).

STORAGE

Store at 4°C short term. For long term storage, store at -20°C, avoiding freeze/thaw cycles.

NOTE

For Research Use Only. Not for diagnostic, therapeutics, prophylactic or in vivo use.