

## DATASHEET

# Calreticulin Mouse Monoclonal Antibody(C2573)

CAT. NO. AMA02185

### KEY FEATURES

Target	Calreticulin	Source / Host	Mouse
Reactivity	Human, Mouse, Rat	Clonality	Monoclonal
Applications	WB, IHC, FC	Conjugation	Unconjugated
Form / Buffer	Mouse IgG1. Liquid in PBS, pH 7.3, 30% glycerol, and 0.01% sodium azide.	Storage	at-20°C

### BACKGROUND

Calcium-binding chaperone that promotes folding, oligomeric assembly and quality control in the endoplasmic reticulum (ER) via the calreticulin/calnexin cycle. This lectin interacts transiently with almost all of the monoglucosylated glycoproteins that are synthesized in the ER via the calreticulin/calnexin cycle. This lectin interacts transiently with almost all of the monoglucosylated glycoproteins that are synthesized in the ER. Interacts with the DNA-binding domain of NR3C1 and mediates its nuclear export. Involved in maternal gene expression regulation. May participate in oocyte maturation via the regulation of calcium homeostasis.

### APPLICATION

To ensure optimal assay performance, AREX recommends conducting reagent titration tailored to each testing system for optimal detection results.

WB	1:500 - 1:1000
IHC	1:100 - 1:500
FC	1:100 - 1:200

\*Results are sample-specific. Please refer to your local assay conditions and test parameters for reference.

### PRODUCT OVERVIEW

Description	Mouse monoclonal to Calreticulin
Specificity	Recognizes endogenous levels of Calreticulin protein
Antibody Type	Primary antibody
Immunogen	Recombinant fusion protein of human Calreticulin expressed in E. Coli
Purification	This antibody is purified through a protein G column.
Molecular Weight	Predicted: 48 kD; Observed: 50 kD
Form/Buffer	Mouse IgG1. Liquid in PBS, pH 7.3, 30% glycerol, and 0.01% sodium azide.
Alternative Names	CRTC; CalretIC,ulin; CRP55; Calregulin; EndoplasmIC, retIC,ulum resident protein 60; ERp60; HACBP; grp60
Gene Symbol	CALR
Entrez Gene	811(Human); 12317(Mouse); 64202(Rat)
SwissProt	P27797(Human); P14211(Mouse); P18418(Rat)

\*AREX continuously optimizes our products. Webpage content may not reflect the latest updates. For inquiries, please contact [info@arexbio.com](mailto:info@arexbio.com) or your local distributor.

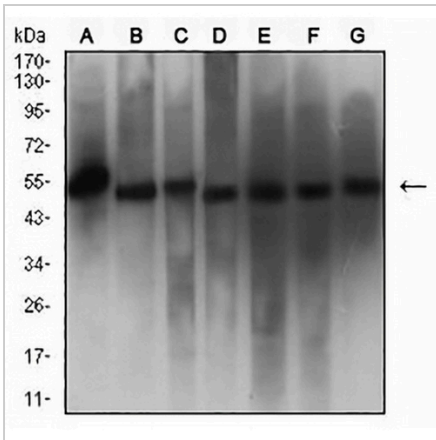
\*Clone Number, Reactivity, Source/Host and Clonality can be found in the product name and Key Features section above.

**DATASHEET**

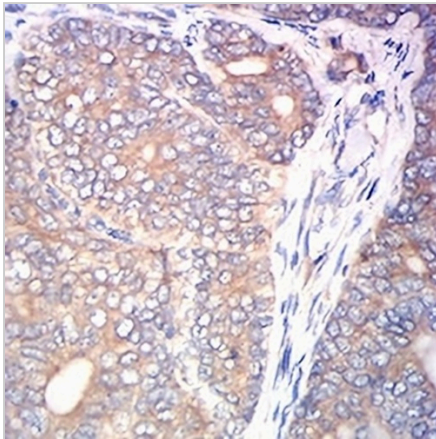
**Calreticulin Mouse Monoclonal Antibody(C2573)**

CAT. NO. AMA02185

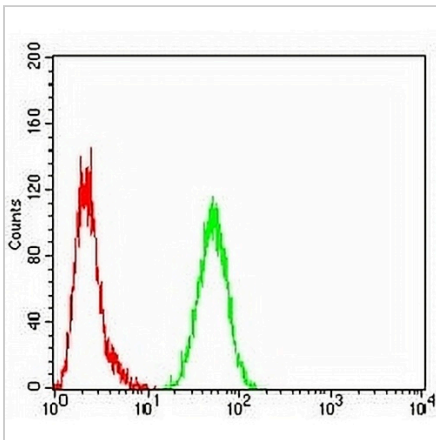
**DATA**



Western blot analysis of Calreticulin expression in HeLa (A), MCF7 (B), NIH/3T3 (C), HepG2 (D), Jurkat (E), Y79 (F), C6 (G) whole cell lysates. (Predicted band size: 48 kD; Observed band size: 50 kD)



Immunohistochemical analysis of Calreticulin staining in human cervical cancer formalin fixed paraffin embedded tissue section. The section was pre-treated using heat mediated antigen retrieval with sodium citrate buffer (pH 6.0). The section was then incubated with the antibody at room temperature and detected using an HRP conjugated compact polymer system. DAB was used as the chromogen. The section was then counterstained with haematoxylin and mounted with DPX.



Flow cytometric analysis of HeLa cells using Anti-Calreticulin Antibody (green) and negative control (red).

**STORAGE**

Store at 4°C short term. For long term storage, store at -20°C, avoiding freeze/thaw cycles.

**NOTE**

For Research Use Only. Not for diagnostic, therapeutics, prophylactic or in vivo use.