

DATASHEET

CaMK2 gamma Mouse Monoclonal Antibody(C2574)

CAT. NO. AMA02186

KEY FEATURES

Target	CaMK2 gamma	Source / Host	Mouse
Reactivity	Human, Rat	Clonality	Monoclonal
Applications	WB, IHC, FC	Conjugation	Unconjugated
Form / Buffer	Mouse IgG1. Liquid in PBS, pH 7.3, 30% glycerol, and 0.01% sodium azide.	Storage	at-20°C

BACKGROUND

Calcium/calmodulin-dependent protein kinase that functions autonomously after Ca(2+)/calmodulin-binding and autophosphorylation, and is involved in sarcoplasmic reticulum Ca(2+) transport in skeletal muscle and may function in dendritic spine and synapse formation and neuronal plasticity /calmodulin-binding and autophosphorylation, and is involved in sarcoplasmic reticulum Ca(2+) transport in skeletal muscle and may function in dendritic spine and synapse formation and neuronal plasticity . In slow-twitch muscles, is involved in regulation of sarcoplasmic reticulum (SR) Ca(2+) transport and in fast-twitch muscle participates in the control of Ca(2+) release from the SR through phosphorylation of the ryanodine receptor-coupling factor triadin .

APPLICATION

To ensure optimal assay performance, AREX recommends conducting reagent titration tailored to each testing system for optimal detection results.

WB	1:500 - 1:1000
IHC	1:100 - 1:500
FC	1:100 - 1:200

*Results are sample-specific. Please refer to your local assay conditions and test parameters for reference.

PRODUCT OVERVIEW

Description	Mouse monoclonal to CaMK2 gamma
Specificity	Recognizes endogenous levels of CaMK2 gamma protein
Antibody Type	Primary antibody
Immunogen	Recombinant fusion protein of human CaMK2 gamma expressed in E. Coli
Purification	This antibody is purified through a protein G column.
Molecular Weight	Predicted: 63 kD; Observed: 55-65 kD kD
Form/Buffer	Mouse IgG1. Liquid in PBS, pH 7.3, 30% glycerol, and 0.01% sodium azide.
Alternative Names	CAMK; CAMK-II; CAMKG; Calcium/calmodulin-dependent protein kinase type II subunit gamma; CaM kinase II subunit gamma; CaMK-II subunit gamma
Gene Symbol	CAMK2G
Entrez Gene	818(Human); 171140(Rat)
SwissProt	Q13555(Human); P11730(Rat)

*AREX continuously optimizes our products. Webpage content may not reflect the latest updates. For inquiries, please contact info@arexbio.com or your local distributor.

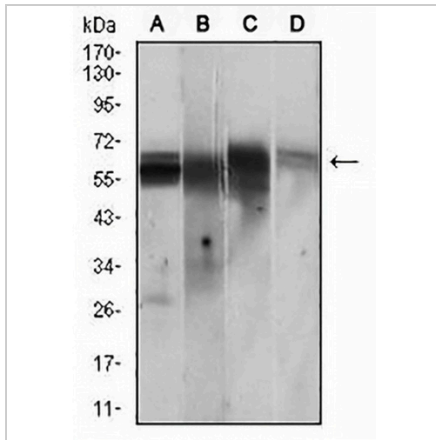
*Clone Number, Reactivity, Source/Host and Clonality can be found in the product name and Key Features section above.

DATASHEET

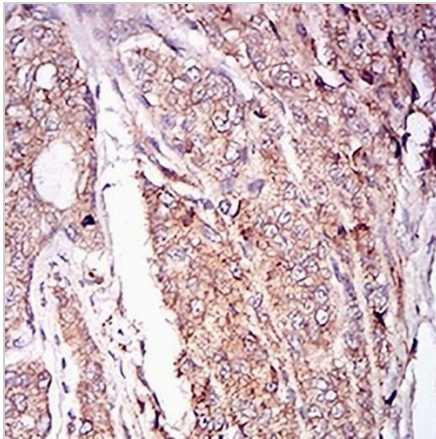
CaMK2 gamma Mouse Monoclonal Antibody(C2574)

CAT. NO. AMA02186

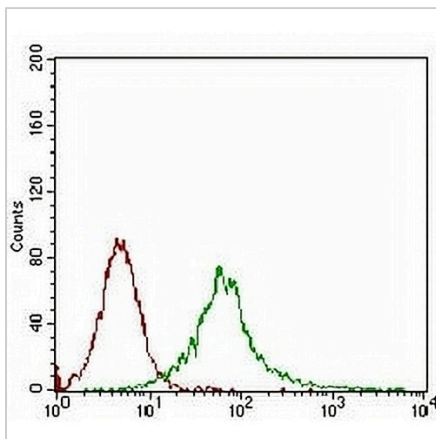
DATA



Western blot analysis of CaMK2 gamma expression in PC12 (A), Jurkat (B), T47D (C), HepG2 (D) whole cell lysates. (Predicted band size: 63 kD; Observed band size: 55-65 kD)



Immunohistochemical analysis of CaMK2 gamma staining in human prostate cancer formalin fixed paraffin embedded tissue section. The section was pre-treated using heat mediated antigen retrieval with sodium citrate buffer (pH 6.0). The section was then incubated with the antibody at room temperature and detected using an HRP conjugated compact polymer system. DAB was used as the chromogen. The section was then counterstained with haematoxylin and mounted with DPX.



Flow cytometric analysis of Jurkat cells using Anti-CaMK2 gamma Antibody (green) and negative control (red).

STORAGE

Store at 4°C short term. For long term storage, store at -20°C, avoiding freeze/thaw cycles.

NOTE

For Research Use Only. Not for diagnostic, therapeutics, prophylactic or in vivo use.