

DATASHEET
CCL2 Mouse Monoclonal Antibody(C2583)
CAT. NO. AMA02195
KEY FEATURES

Target	CCL2	Source / Host	Mouse
Reactivity	Human, Mouse, Monkey	Clonality	Monoclonal
Applications	WB, IHC, IF/ICC, FC	Conjugation	Unconjugated
Form / Buffer	Mouse IgG1. Liquid in PBS, pH 7.3, 30% glycerol, and 0.01% sodium azide.	Storage	at-20°C

BACKGROUND

Acts as a ligand for C-C chemokine receptor CCR2 . Signals through binding and activation of CCR2 and induces a strong chemotactic response and mobilization of intracellular calcium ions . Exhibits a chemotactic activity for monocytes and basophils but not neutrophils or eosinophils . May be involved in the recruitment of monocytes into the arterial wall during the disease process of atherosclerosis .

APPLICATION

To ensure optimal assay performance, AREX recommends conducting reagent titration tailored to each testing system for optimal detection results.

WB	1:500 - 1:1000
IHC	1:100 - 1:500
IF/ICC	1:100 - 1:500
FC	1:100 - 1:200

*Results are sample-specific. Please refer to your local assay conditions and test parameters for reference.

PRODUCT OVERVIEW

Description	Mouse monoclonal to CCL2
Specificity	Recognizes endogenous levels of CCL2 protein
Antibody Type	Primary antibody
Immunogen	Recombinant fusion protein of human CCL2 expressed in E. Coli
Purification	This antibody is purified through a protein G column.
Molecular Weight	Predicted: 11 kD; Observed: 15 kD kD
Form/Buffer	Mouse IgG1. Liquid in PBS, pH 7.3, 30% glycerol, and 0.01% sodium azide.
Alternative Names	MCP1; SCYA2; C-C motif chemokine 2; HC11; Monocyte chemoattractant protein 1; Monocyte chemotactiC, and activating factor; MCAF; Monocyte chemotactiC, protein 1; MCP-1; Monocyte secretory protein JE; Small-inducible cytokine A2
Gene Symbol	CCL2
Entrez Gene	6347(Human); 24770(Rat)
SwissProt	P13500(Human); P10148(Mouse)

*AREX continuously optimizes our products. Webpage content may not reflect the latest updates. For inquiries, please contact info@arexbio.com or your local distributor.

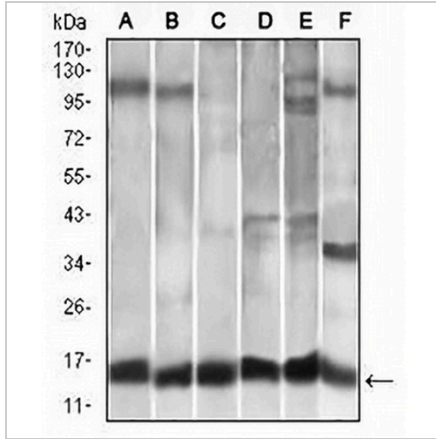
*Clone Number, Reactivity, Source/Host and Clonality can be found in the product name and Key Features section above.

DATASHEET

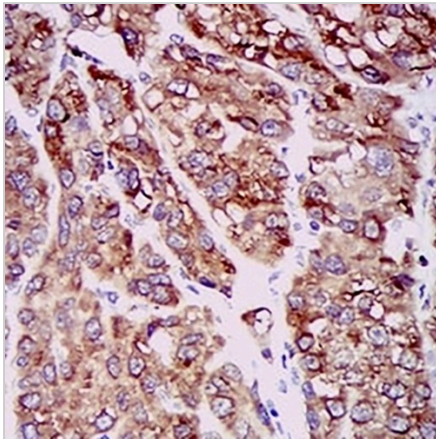
CCL2 Mouse Monoclonal Antibody(C2583)

CAT. NO. AMA02195

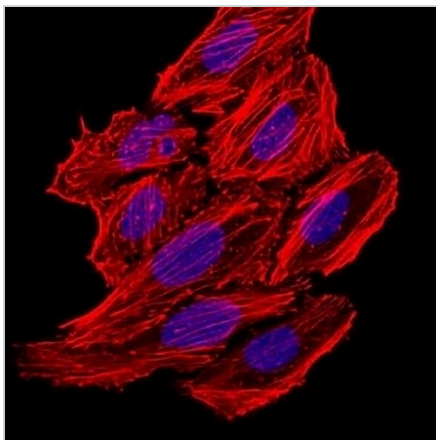
DATA



Western blot analysis of CCL2 expression in A549 (A), HeLa (B), Raw264.7 (C), L1210 (D), C6 (E), COS7 (F) whole cell lysates. (Predicted band size: 11 kDa; Observed band size: 15 kDa)



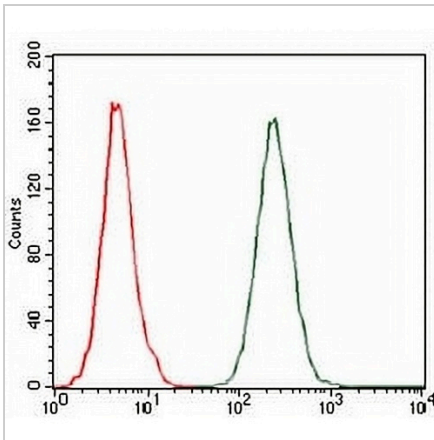
Immunohistochemical analysis of CCL2 staining in human liver cancer formalin fixed paraffin embedded tissue section. The section was pre-treated using heat mediated antigen retrieval with sodium citrate buffer (pH 6.0). The section was then incubated with the antibody at room temperature and detected using an HRP conjugated compact polymer system. DAB was used as the chromogen. The section was then counterstained with haematoxylin and mounted with DPX.



Immunofluorescent analysis of CCL2 staining in HepG2 cells. Formalin-fixed cells were permeabilized with 0.1% Triton X-100 in TBS for 5-10 minutes and blocked with 3% BSA-PBS for 30 minutes at room temperature. Cells were probed with the primary antibody in 3% BSA-PBS and incubated overnight at 4 °C in a humidified chamber. Cells were washed with PBST and incubated with an AREX® Fluor 488 -conjugated secondary antibody (green) in PBS at room temperature in the dark. Phalloidin - AREX® Fluor 594 was used to stain Actin filaments (red). DAPI was used to stain the cell nuclei (blue).

DATASHEET**CCL2 Mouse Monoclonal Antibody(C2583)**

CAT. NO. AMA02195

DATA (CONTINUED)

Flow cytometric analysis of A549 cells using Anti-CCL2 Antibody (green) and negative control (red).

STORAGE

Store at 4°C short term. For long term storage, store at -20°C, avoiding freeze/thaw cycles.

NOTE

For Research Use Only. Not for diagnostic, therapeutics, prophylactic or in vivo use.