

DATASHEET

Cyclin A2 Mouse Monoclonal Antibody(C2584)

CAT. NO. AMA02196

KEY FEATURES

Target	Cyclin A2	Source / Host	Mouse
Reactivity	Human	Clonality	Monoclonal
Applications	WB, IHC, FC	Conjugation	Unconjugated
Form / Buffer	Mouse IgG1. Liquid in PBS, pH 7.3, 30% glycerol, and 0.01% sodium azide.	Storage	at-20°C

BACKGROUND

Cyclin which controls both the G1/S and the G2/M transition phases of the cell cycle. Functions through the formation of specific serine/threonine protein kinase holoenzyme complexes with the cyclin-dependent protein kinases CDK1 or CDK2. The cyclin subunit confers the substrate specificity of these complexes and differentially interacts with and activates CDK1 and CDK2 throughout the cell cycle.

APPLICATION

To ensure optimal assay performance, AREX recommends conducting reagent titration tailored to each testing system for optimal detection results.

WB	1:500 - 1:1000
IHC	1:100 - 1:500
FC	1:100 - 1:200

*Results are sample-specific. Please refer to your local assay conditions and test parameters for reference.

PRODUCT OVERVIEW

Description	Mouse monoclonal to Cyclin A2
Specificity	Recognizes endogenous levels of Cyclin A2 protein
Antibody Type	Primary antibody
Immunogen	Recombinant fusion protein of human Cyclin A2 expressed in E. Coli
Purification	This antibody is purified through a protein G column.
Molecular Weight	Predicted: 49 kD; Observed: 49 kD
Form/Buffer	Mouse IgG1. Liquid in PBS, pH 7.3, 30% glycerol, and 0.01% sodium azide.
Alternative Names	CCN1; CCNA; Cyclin-A2; Cyclin-A
Gene Symbol	CCNA2
Entrez Gene	890(Human)
SwissProt	P20248(Human)

*AREX continuously optimizes our products. Webpage content may not reflect the latest updates. For inquiries, please contact info@arexbio.com or your local distributor.

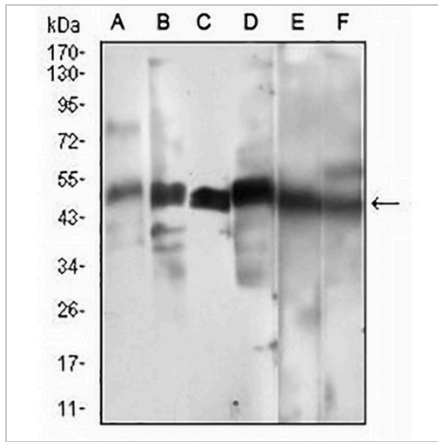
*Clone Number, Reactivity, Source/Host and Clonality can be found in the product name and Key Features section above.

DATASHEET

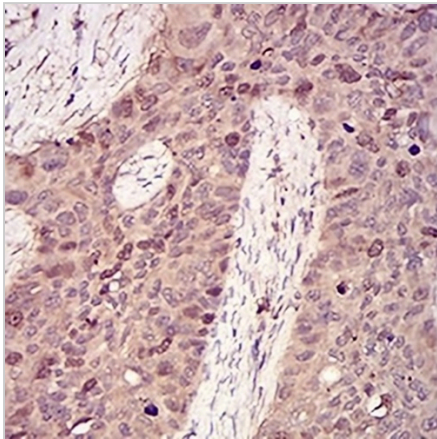
Cyclin A2 Mouse Monoclonal Antibody(C2584)

CAT. NO. AMA02196

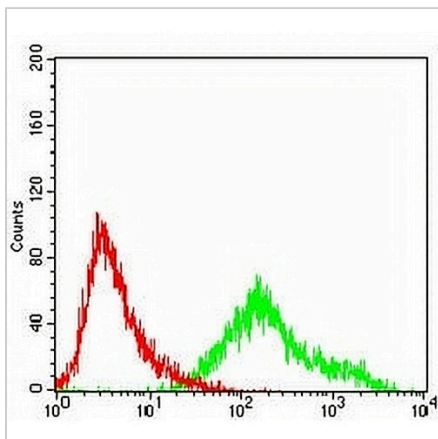
DATA



Western blot analysis of Cyclin A2 expression in Hela (A), HEK293 (B), Jurkat (C), K562 (D), SKBr3 (E), NIH/3T3 (F) whole cell lysates. (Predicted band size: 49 kD; Observed band size: 49 kD)



Immunohistochemical analysis of Cyclin A2 staining in human cervical cancer formalin fixed paraffin embedded tissue section. The section was pre-treated using heat mediated antigen retrieval with sodium citrate buffer (pH 6.0). The section was then incubated with the antibody at room temperature and detected using an HRP conjugated compact polymer system. DAB was used as the chromogen. The section was then counterstained with haematoxylin and mounted with DPX.



Flow cytometric analysis of A431 cells using Anti-Cyclin A2 Antibody (green) and negative control (red).

STORAGE

Store at 4°C short term. For long term storage, store at -20°C, avoiding freeze/thaw cycles.

NOTE

For Research Use Only. Not for diagnostic, therapeutics, prophylactic or in vivo use.