

DATASHEET

CD191 Mouse Monoclonal Antibody(C2586)

CAT. NO. AMA02198

KEY FEATURES

Target	CD191	Source / Host	Mouse
Reactivity	Human	Clonality	Monoclonal
Applications	WB, FC	Conjugation	Unconjugated
Form / Buffer	Mouse IgG1. Liquid in PBS, pH 7.3, 30% glycerol, and 0.01% sodium azide.	Storage	at-20°C

BACKGROUND

Chemokine receptor that plays a crucial role in regulating immune cell migration, inflammation, and immune responses . Contributes to the inflammatory response by recruiting immune cells, such as monocytes, macrophages, T-cells, and dendritic cells, to sites of inflammation for the clearance of pathogens and the resolution of tissue damage. When activated by its ligands including CCL3, CCL5-9, CCL13-16 and CCL23, triggers a signaling cascade within immune cells, leading to their migration towards the source of the chemokine . For example, mediates neutrophil migration after activation by CCL3 leading to the sequential release of TNF and leukotriene B4 . Also mediates monocyte migration upon CXCL4 binding .

APPLICATION

To ensure optimal assay performance, AREX recommends conducting reagent titration tailored to each testing system for optimal detection results.

WB	1:500 - 1:1000
FC	1:100 - 1:200

*Results are sample-specific. Please refer to your local assay conditions and test parameters for reference.

PRODUCT OVERVIEW

Description	Mouse monoclonal to CD191
Specificity	Recognizes endogenous levels of CD191 protein
Antibody Type	Primary antibody
Immunogen	Recombinant fusion protein of human CD191 expressed in E. Coli
Purification	This antibody is purified through a protein G column.
Molecular Weight	Predicted: 41 kD; Observed: 41 kD
Form/Buffer	Mouse IgG1. Liquid in PBS, pH 7.3, 30% glycerol, and 0.01% sodium azide.
Alternative Names	CMKBR1; CMKR1; SCYAR1; C-C chemokine receptor type 1; C-C CKR-1; CC-CKR-1; CCR-1; CCR1; HM145; LD78 receptor; Macrophage inflammatory protein 1-alpha receptor; MIP-1alpha-R; RANTES-R; CD191
Gene Symbol	CCR1
Entrez Gene	1230(Human)
SwissProt	P32246(Human)

*AREX continuously optimizes our products. Webpage content may not reflect the latest updates. For inquiries, please contact info@arexbio.com or your local distributor.

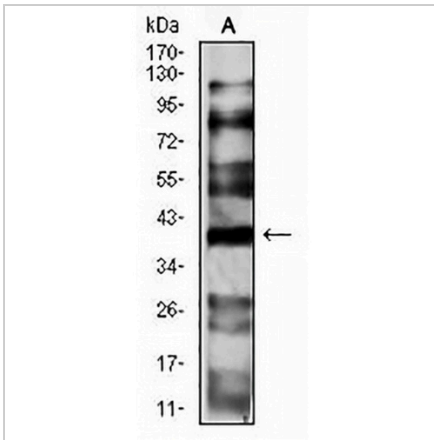
*Clone Number, Reactivity, Source/Host and Clonality can be found in the product name and Key Features section above.

DATASHEET

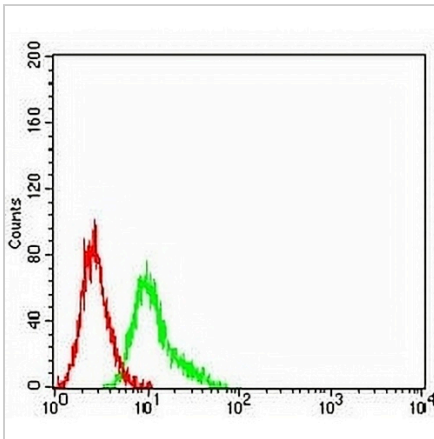
CD191 Mouse Monoclonal Antibody(C2586)

CAT. NO. AMA02198

DATA



Western blot analysis of CD191 expression in HepG2 (A) whole cell lysates. (Predicted band size: 41 kD; Observed band size: 41 kD)



Flow cytometric analysis of Ramos cells using Anti-CD191 Antibody (green) and negative control (red).

STORAGE

Store at 4°C short term. For long term storage, store at -20°C, avoiding freeze/thaw cycles.

NOTE

For Research Use Only. Not for diagnostic, therapeutics, prophylactic or in vivo use.