

DATASHEET

CCR5 Mouse Monoclonal Antibody(C2587)

CAT. NO. AMA02199

KEY FEATURES

| | | | |
|---------------|--|---------------|--------------|
| Target | CCR5 | Source / Host | Mouse |
| Reactivity | Human, Rat | Clonality | Monoclonal |
| Applications | WB, IHC, FC | Conjugation | Unconjugated |
| Form / Buffer | Mouse IgG1. Liquid in PBS, pH 7.3, 30% glycerol, and 0.01% sodium azide. | Storage | at-20°C |

BACKGROUND

Receptor for a number of inflammatory CC-chemokines including CCL3/MIP-1-alpha, CCL4/MIP-1-beta and RANTES and subsequently transduces a signal by increasing the intracellular calcium ion level. May play a role in the control of granulocytic lineage proliferation or differentiation. Participates in T-lymphocyte migration to the infection site by acting as a chemotactic receptor .

APPLICATION

To ensure optimal assay performance, AREX recommends conducting reagent titration tailored to each testing system for optimal detection results.

| | |
|-----|----------------|
| WB | 1:500 - 1:1000 |
| IHC | 1:100 - 1:500 |
| FC | 1:100 - 1:200 |

*Results are sample-specific. Please refer to your local assay conditions and test parameters for reference.

PRODUCT OVERVIEW

| | |
|-------------------|--|
| Description | Mouse monoclonal to CCR5 |
| Specificity | Recognizes endogenous levels of CCR5 protein |
| Antibody Type | Primary antibody |
| Immunogen | Recombinant fusion protein of human CCR5 expressed in E. Coli |
| Purification | This antibody is purified through a protein G column. |
| Molecular Weight | Predicted: 41 kD; Observed: 41 kD kD |
| Form/Buffer | Mouse IgG1. Liquid in PBS, pH 7.3, 30% glycerol, and 0.01% sodium azide. |
| Alternative Names | CMKBR5; C-C chemokine receptor type 5; C-C CKR-5; CC-CKR-5; CCR-5; CCR5; CHEMR13; HIV-1 fusion coreceptor; CD195 |
| Gene Symbol | CCR5 |
| Entrez Gene | 1234(Human); 117029(Rat) |
| SwissProt | P51681(Human); O08556(Rat) |

*AREX continuously optimizes our products. Webpage content may not reflect the latest updates. For inquiries, please contact info@arexbio.com or your local distributor.

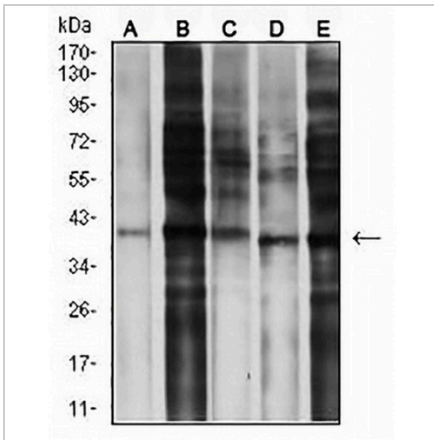
*Clone Number, Reactivity, Source/Host and Clonality can be found in the product name and Key Features section above.

DATASHEET

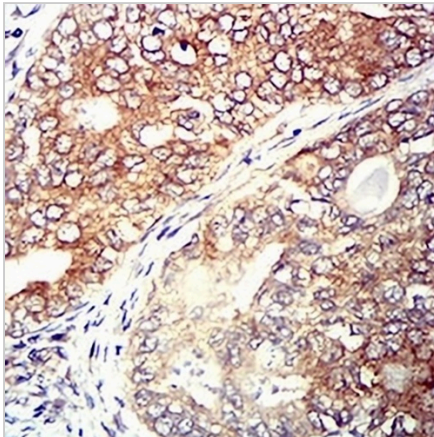
CCR5 Mouse Monoclonal Antibody(C2587)

CAT. NO. AMA02199

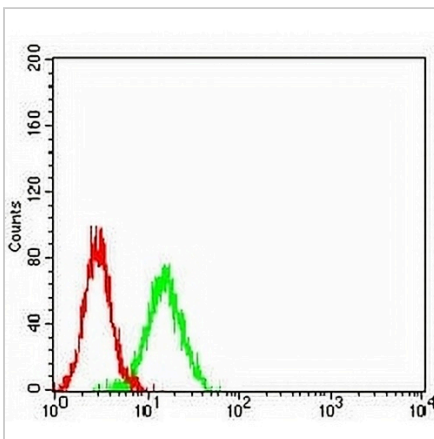
DATA



Western blot analysis of CCR5 expression in MOLT4 (A), L02 (B), SPAC1 (C), A549 (D), C6 (E) whole cell lysates. (Predicted band size: 41 kD; Observed band size: 41 kD)



Immunohistochemical analysis of CCR5 staining in human cervical cancer formalin fixed paraffin embedded tissue section. The section was pre-treated using heat mediated antigen retrieval with sodium citrate buffer (pH 6.0). The section was then incubated with the antibody at room temperature and detected using an HRP conjugated compact polymer system. DAB was used as the chromogen. The section was then counterstained with haematoxylin and mounted with DPX.



Flow cytometric analysis of K562 cells using Anti-CCR5 Antibody (green) and negative control (red).

STORAGE

Store at 4°C short term. For long term storage, store at -20°C, avoiding freeze/thaw cycles.

NOTE

For Research Use Only. Not for diagnostic, therapeutics, prophylactic or in vivo use.