

**DATASHEET**

**CCR6 Mouse Monoclonal Antibody(C2588)**

CAT. NO. AMA02200

**KEY FEATURES**

Target	CCR6	Source / Host	Mouse
Reactivity	Human	Clonality	Monoclonal
Applications	WB, FC	Conjugation	Unconjugated
Form / Buffer	Mouse IgG2a. Liquid in PBS, pH 7.3, 30% glycerol, and 0.01% sodium azide.	Storage	at-20°C

**BACKGROUND**

Receptor for the C-C type chemokine CCL20 . Binds to CCL20 and subsequently transduces a signal by increasing the intracellular calcium ion levels . Although CCL20 is its major ligand it can also act as a receptor for non-chemokine ligands such as beta-defensins . Binds to defensin DEFB1 leading to increase in intracellular calcium ions and cAMP levels. Its binding to DEFB1 is essential for the function of DEFB1 in regulating sperm motility and bactericidal activity . Binds to defensins DEFB4 and DEFB4A/B and mediates their chemotactic effects .

**APPLICATION**

To ensure optimal assay performance, AREX recommends conducting reagent titration tailored to each testing system for optimal detection results.

WB	1:500 - 1:1000
FC	1:100 - 1:200

\*Results are sample-specific. Please refer to your local assay conditions and test parameters for reference.

**PRODUCT OVERVIEW**

Description	Mouse monoclonal to CCR6
Specificity	Recognizes endogenous levels of CCR6 protein
Antibody Type	Primary antibody
Immunogen	Recombinant fusion protein of human CCR6 expressed in E. Coli
Purification	This antibody is purified through a protein G column.
Molecular Weight	Predicted: 43 kD; Observed: 70 kD kD
Form/Buffer	Mouse IgG2a. Liquid in PBS, pH 7.3, 30% glycerol, and 0.01% sodium azide.
Alternative Names	CKRL3; CMKBR6; GPR29; STRL22; C-C chemokine receptor type 6; C-C CKR-6; CC-CKR-6; CCR-6; Chemokine receptor-like 3; CKR-L3; DRY6; G-protein coupled receptor 29; GPR-CY4; GPRCY4; LARC receptor; CD196
Gene Symbol	CCR6
Entrez Gene	1235(Human)
SwissProt	P51684(Human)

\*AREX continuously optimizes our products. Webpage content may not reflect the latest updates. For inquiries, please contact [info@arexbio.com](mailto:info@arexbio.com) or your local distributor.

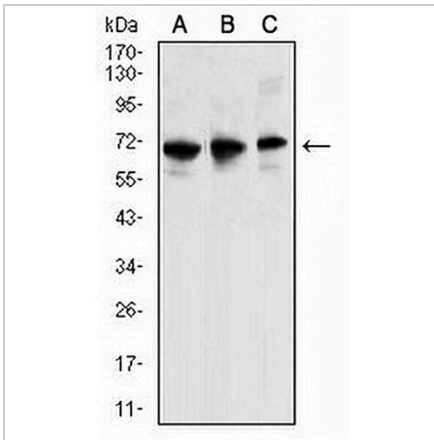
\*Clone Number, Reactivity, Source/Host and Clonality can be found in the product name and Key Features section above.

**DATASHEET**

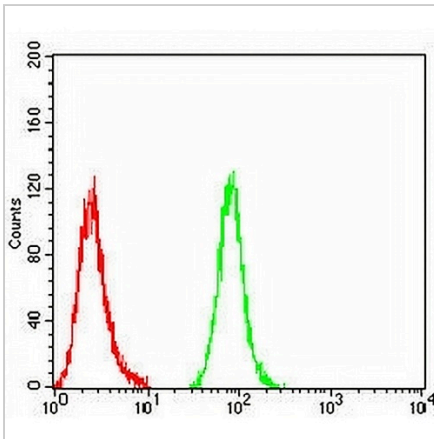
**CCR6 Mouse Monoclonal Antibody(C2588)**

CAT. NO. AMA02200

**DATA**



Western blot analysis of CCR6 expression in K562 (A), THP1 (B), HL60 (C) whole cell lysates. (Predicted band size: 43 kD; Observed band size: 70 kD)



Flow cytometric analysis of THP1 cells using Anti-CCR6 Antibody (green) and negative control (red).

**STORAGE**

Store at 4°C short term. For long term storage, store at -20°C, avoiding freeze/thaw cycles.

**NOTE**

For Research Use Only. Not for diagnostic, therapeutics, prophylactic or in vivo use.