

DATASHEET

CCR7 Mouse Monoclonal Antibody(C2589)

CAT. NO. AMA02201

KEY FEATURES

Target	CCR7	Source / Host	Mouse
Reactivity	Human	Clonality	Monoclonal
Applications	WB, FC	Conjugation	Unconjugated
Form / Buffer	Mouse IgG1. Liquid in PBS, pH 7.3, 30% glycerol, and 0.01% sodium azide.	Storage	at-20°C

BACKGROUND

Receptor for the MIP-3-beta chemokine. Probable mediator of EBV effects on B-lymphocytes or of normal lymphocyte functions.

APPLICATION

To ensure optimal assay performance, AREX recommends conducting reagent titration tailored to each testing system for optimal detection results.

WB	1:500 - 1:1000
FC	1:100 - 1:200

*Results are sample-specific. Please refer to your local assay conditions and test parameters for reference.

PRODUCT OVERVIEW

Description	Mouse monoclonal to CCR7
Specificity	Recognizes endogenous levels of CCR7 protein
Antibody Type	Primary antibody
Immunogen	Recombinant fusion protein of human CCR7 expressed in E. Coli
Purification	This antibody is purified through a protein G column.
Molecular Weight	Predicted: 43 kD; Observed: 44 kD
Form/Buffer	Mouse IgG1. Liquid in PBS, pH 7.3, 30% glycerol, and 0.01% sodium azide.
Alternative Names	CMKBR7; EBI1; EVI1; C-C chemokine receptor type 7; C-C CKR-7; CC-CKR-7; CCR-7; BLR2; CDw197; Epstein-Barr virus-induced G-protein coupled receptor 1; EBI1; EBV-induced G-protein coupled receptor 1; MIP-3 beta receptor; CD197
Gene Symbol	CCR7
Entrez Gene	1236(Human)
SwissProt	P32248(Human)

*AREX continuously optimizes our products. Webpage content may not reflect the latest updates. For inquiries, please contact info@arexbio.com or your local distributor.

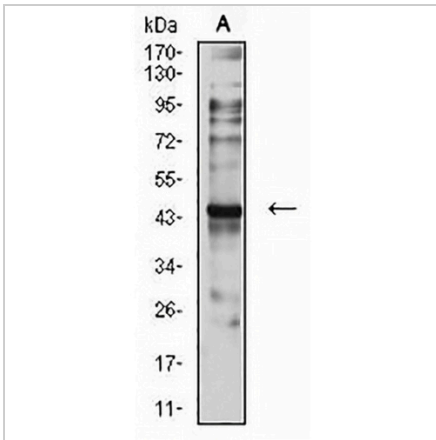
*Clone Number, Reactivity, Source/Host and Clonality can be found in the product name and Key Features section above.

DATASHEET

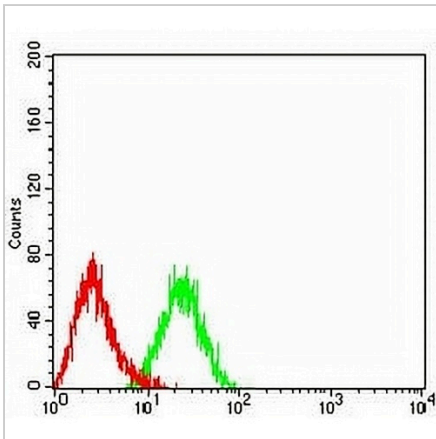
CCR7 Mouse Monoclonal Antibody(C2589)

CAT. NO. AMA02201

DATA



Western blot analysis of CCR7 expression in C6 (A) whole cell lysates. (Predicted band size: 43 kD; Observed band size: 44 kD)



Flow cytometric analysis of HL60 cells using Anti-CCR7 Antibody (green) and negative control (red).

STORAGE

Store at 4°C short term. For long term storage, store at -20°C, avoiding freeze/thaw cycles.

NOTE

For Research Use Only. Not for diagnostic, therapeutics, prophylactic or in vivo use.