

DATASHEET

CD1a Mouse Monoclonal Antibody(C2593)

CAT. NO. AMA02205

KEY FEATURES

Target	CD1a	Source / Host	Mouse
Reactivity	Human, Mouse, Monkey	Clonality	Monoclonal
Applications	WB, IHC, IF/ICC, FC	Conjugation	Unconjugated
Form / Buffer	Mouse IgG2a. Liquid in PBS, pH 7.3, 30% glycerol, and 0.01% sodium azide.	Storage	at-20°C

BACKGROUND

Antigen-presenting protein that binds self and non-self lipid and glycolipid antigens and presents them to T-cell receptors on natural killer T-cells.

APPLICATION

To ensure optimal assay performance, AREX recommends conducting reagent titration tailored to each testing system for optimal detection results.

WB	1:500 - 1:1000
IHC	1:100 - 1:500
IF/ICC	1:100 - 1:500
FC	1:100 - 1:200

*Results are sample-specific. Please refer to your local assay conditions and test parameters for reference.

PRODUCT OVERVIEW

Description	Mouse monoclonal to CD1a
Specificity	Recognizes endogenous levels of CD1a protein
Antibody Type	Primary antibody
Immunogen	Recombinant fusion protein of human CD1a expressed in E. Coli
Purification	This antibody is purified through a protein G column.
Molecular Weight	Predicted: 37 kD; Observed: 42 kD
Form/Buffer	Mouse IgG2a. Liquid in PBS, pH 7.3, 30% glycerol, and 0.01% sodium azide.
Alternative Names	T-cell surface glycoprotein CD1a; T-cell surface antigen T6/Leu-6; hTa1 thymocyte antigen; CD1a
Gene Symbol	CD1A
Entrez Gene	909(Human)
SwissProt	P06126(Human)

*AREX continuously optimizes our products. Webpage content may not reflect the latest updates. For inquiries, please contact info@arexbio.com or your local distributor.

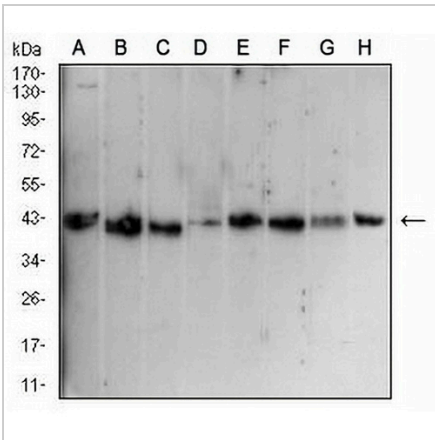
*Clone Number, Reactivity, Source/Host and Clonality can be found in the product name and Key Features section above.

DATASHEET

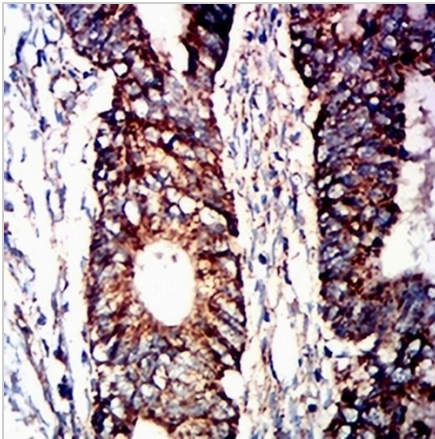
CD1a Mouse Monoclonal Antibody(C2593)

CAT. NO. AMA02205

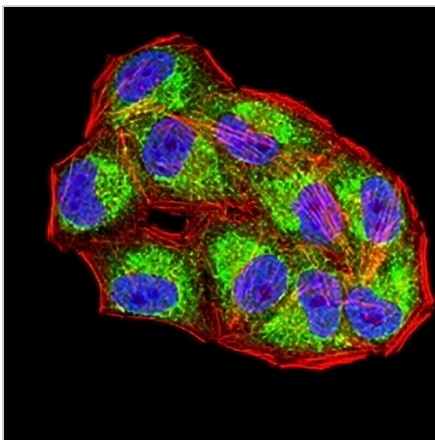
DATA



Western blot analysis of CD1a expression in HeLa (A), HepG2 (B), HEK293 (C), MOLT4 (D), K562 (E), HEK293-6e (F), COS7 (G), NIH/3T3 (H) whole cell lysates. (Predicted band size: 37 kD; Observed band size: 42 kD)



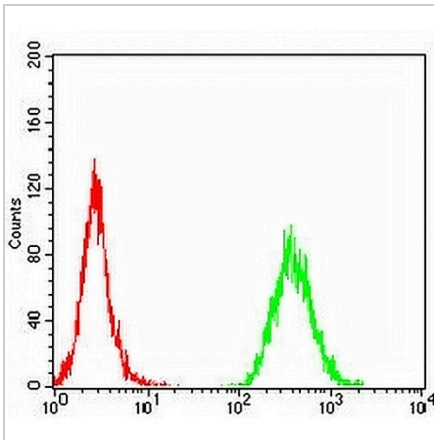
Immunohistochemical analysis of CD1a staining in human bladder cancer formalin fixed paraffin embedded tissue section. The section was pre-treated using heat mediated antigen retrieval with sodium citrate buffer (pH 6.0). The section was then incubated with the antibody at room temperature and detected using an HRP conjugated compact polymer system. DAB was used as the chromogen. The section was then counterstained with haematoxylin and mounted with DPX.



Immunofluorescent analysis of CD1a staining in HeLa cells. Formalin-fixed cells were permeabilized with 0.1% Triton X-100 in TBS for 5-10 minutes and blocked with 3% BSA-PBS for 30 minutes at room temperature. Cells were probed with the primary antibody in 3% BSA-PBS and incubated overnight at 4 °C in a humidified chamber. Cells were washed with PBST and incubated with an AREX® Fluor 488 -conjugated secondary antibody (green) in PBS at room temperature in the dark. Phalloidin - AREX® Fluor 594 was used to stain Actin filaments (red). DAPI was used to stain the cell nuclei (blue).

DATASHEET**CD1a Mouse Monoclonal Antibody(C2593)**

CAT. NO. AMA02205

DATA (CONTINUED)

Flow cytometric analysis of MOLT4 cells using Anti-CD1a Antibody (green) and negative control (red).

STORAGE

Store at 4°C short term. For long term storage, store at -20°C, avoiding freeze/thaw cycles.

NOTE

For Research Use Only. Not for diagnostic, therapeutics, prophylactic or in vivo use.