

## DATASHEET

# CD3g Mouse Monoclonal Antibody(C2602)

CAT. NO. AMA02214

### KEY FEATURES

Target	CD3g	Source / Host	Mouse
Reactivity	Human	Clonality	Monoclonal
Applications	WB, FC	Conjugation	Unconjugated
Form / Buffer	Mouse IgG1. Liquid in PBS, pH 7.3, 30% glycerol, and 0.01% sodium azide.	Storage	at-20°C

### BACKGROUND

Part of the TCR-CD3 complex present on T-lymphocyte cell surface that plays an essential role in adaptive immune response. When antigen presenting cells (APCs) activate T-cell receptor (TCR), TCR-mediated signals are transmitted across the cell membrane by the CD3 chains CD3D, CD3E, CD3G and CD247/CD3Z. All CD3 chains contain immunoreceptor tyrosine-based activation motifs (ITAMs) in their cytoplasmic domain. Upon TCR engagement, these motifs become phosphorylated by Src family protein tyrosine kinases LCK and FYN, resulting in the activation of downstream signaling pathways activate T-cell receptor (TCR), TCR-mediated signals are transmitted across the cell membrane by the CD3 chains CD3D, CD3E, CD3G and CD247/CD3Z.

### APPLICATION

To ensure optimal assay performance, AREX recommends conducting reagent titration tailored to each testing system for optimal detection results.

WB	1:500 - 1:1000
FC	1:100 - 1:200

\*Results are sample-specific. Please refer to your local assay conditions and test parameters for reference.

### PRODUCT OVERVIEW

Description	Mouse monoclonal to CD3g
Specificity	Recognizes endogenous levels of CD3g protein
Antibody Type	Primary antibody
Immunogen	Recombinant fusion protein of human CD3g expressed in E. Coli
Purification	This antibody is purified through a protein G column.
Molecular Weight	Predicted: 21 kD; Observed: 21 kD kD
Form/Buffer	Mouse IgG1. Liquid in PBS, pH 7.3, 30% glycerol, and 0.01% sodium azide.
Alternative Names	T3G; T-cell surface glycoprotein CD3 gamma chain; T-cell receptor T3 gamma chain; CD3g
Gene Symbol	CD3G
Entrez Gene	917(Human)
SwissProt	P09693(Human)

\*AREX continuously optimizes our products. Webpage content may not reflect the latest updates. For inquiries, please contact [info@arexbio.com](mailto:info@arexbio.com) or your local distributor.

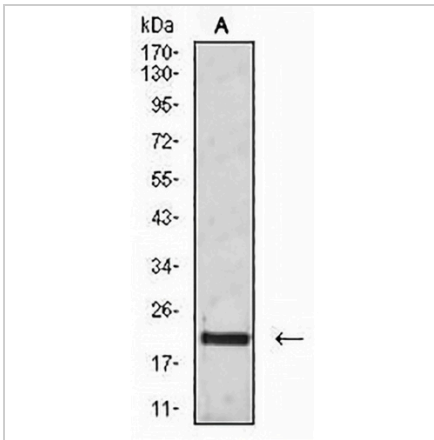
\*Clone Number, Reactivity, Source/Host and Clonality can be found in the product name and Key Features section above.

**DATASHEET**

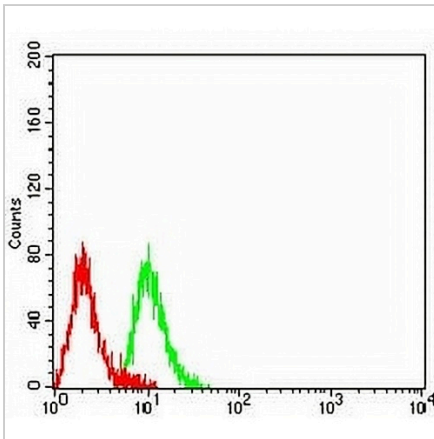
**CD3g Mouse Monoclonal Antibody(C2602)**

CAT. NO. AMA02214

**DATA**



Western blot analysis of CD3g expression in Jurkat (A) whole cell lysates. (Predicted band size: 21 kD; Observed band size: 21 kD)



Flow cytometric analysis of Raji cells using Anti-CD3g Antibody (green) and negative control (red).

**STORAGE**

Store at 4°C short term. For long term storage, store at -20°C, avoiding freeze/thaw cycles.

**NOTE**

For Research Use Only. Not for diagnostic, therapeutics, prophylactic or in vivo use.