

## DATASHEET

# CDC37 Mouse Monoclonal Antibody(C2617)

CAT. NO. AMA02229

### KEY FEATURES

Target	CDC37	Source / Host	Mouse
Reactivity	Human, Mouse	Clonality	Monoclonal
Applications	WB, FC	Conjugation	Unconjugated
Form / Buffer	Mouse IgG2a. Liquid in PBS, pH 7.3, 30% glycerol, and 0.01% sodium azide.	Storage	at-20°C

### BACKGROUND

Co-chaperone that binds to numerous kinases and promotes their interaction with the Hsp90 complex, resulting in stabilization and promotion of their activity . Inhibits HSP90AA1 ATPase activity .

### APPLICATION

To ensure optimal assay performance, AREX recommends conducting reagent titration tailored to each testing system for optimal detection results.

WB	1:500 - 1:1000
FC	1:100 - 1:200

\*Results are sample-specific. Please refer to your local assay conditions and test parameters for reference.

### PRODUCT OVERVIEW

Description	Mouse monoclonal to CDC37
Specificity	Recognizes endogenous levels of CDC37 protein
Antibody Type	Primary antibody
Immunogen	Recombinant fusion protein of human CDC37 expressed in E. Coli
Purification	This antibody is purified through a protein G column.
Molecular Weight	Predicted: 45 kD; Observed: 55 kD kD
Form/Buffer	Mouse IgG2a. Liquid in PBS, pH 7.3, 30% glycerol, and 0.01% sodium azide.
Alternative Names	CDC37A; Hsp90 co-chaperone Cdc37; Hsp90 chaperone protein kinase-targeting subunit; p50Cdc37
Gene Symbol	CDC37
Entrez Gene	11140(Human); 114562(Rat)
SwissProt	Q16543(Human); Q61081(Mouse)

\*AREX continuously optimizes our products. Webpage content may not reflect the latest updates. For inquiries, please contact [info@arexbio.com](mailto:info@arexbio.com) or your local distributor.

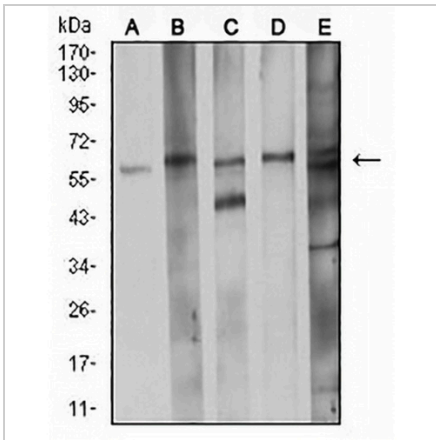
\*Clone Number, Reactivity, Source/Host and Clonality can be found in the product name and Key Features section above.

**DATASHEET**

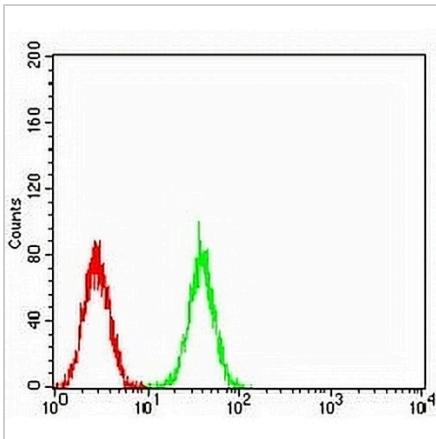
**CDC37 Mouse Monoclonal Antibody(C2617)**

CAT. NO. AMA02229

**DATA**



Western blot analysis of CDC37 expression in K562 (A), LNCap (B), A431 (C), HEK293 (D), C2C12 (E) whole cell lysates. (Predicted band size: 45 kD; Observed band size: 55 kD)



Flow cytometric analysis of K562 cells using Anti-CDC37 Antibody (green) and negative control (red).

**STORAGE**

Store at 4°C short term. For long term storage, store at -20°C, avoiding freeze/thaw cycles.

**NOTE**

For Research Use Only. Not for diagnostic, therapeutics, prophylactic or in vivo use.