

**DATASHEET**

**E Cadherin Mouse Monoclonal Antibody(C2618)**

CAT. NO. AMA02230

**KEY FEATURES**

Target	E Cadherin	Source / Host	Mouse
Reactivity	Human, Mouse, Rat	Clonality	Monoclonal
Applications	WB, IHC, IF/ICC, FC	Conjugation	Unconjugated
Form / Buffer	Mouse IgG1. Liquid in PBS, pH 7.3, 30% glycerol, and 0.01% sodium azide.	Storage	at-20°C

**BACKGROUND**

Cadherins are calcium-dependent cell adhesion proteins . They preferentially interact with themselves in a homophilic manner in connecting cells; cadherins may thus contribute to the sorting of heterogeneous cell types. CDH1 is involved in mechanisms regulating cell-cell adhesions, mobility and proliferation of epithelial cells . Promotes organization of radial actin fiber structure and cellular response to contractile forces, via its interaction with AMOTL2 which facilitates anchoring of radial actin fibers to CDH1 junction complexes at the cell membrane . Plays a role in the early stages of desmosome cell-cell junction formation via facilitating the recruitment of DSG2 and DSP to desmosome plaques . Has a potent invasive suppressor role. It is a ligand for integrin alpha-E/beta-7.

**APPLICATION**

To ensure optimal assay performance, AREX recommends conducting reagent titration tailored to each testing system for optimal detection results.

WB	1:500 - 1:1000
IHC	1:100 - 1:500
IF/ICC	1:100 - 1:500
FC	1:100 - 1:200

\*Results are sample-specific. Please refer to your local assay conditions and test parameters for reference.

**PRODUCT OVERVIEW**

Description	Mouse monoclonal to E Cadherin
Specificity	Recognizes endogenous levels of E Cadherin protein
Antibody Type	Primary antibody
Immunogen	Recombinant fusion protein of human E Cadherin expressed in E. Coli
Purification	This antibody is purified through a protein G column.
Molecular Weight	Predicted: 98 kD; Observed: 98 kD
Form/Buffer	Mouse IgG1. Liquid in PBS, pH 7.3, 30% glycerol, and 0.01% sodium azide.
Alternative Names	CDHE; UVO; Cadherin-1; CAM 120/80; Epithelial cadherin; E-cadherin; Uvomorulin; CD324
Gene Symbol	CDH1
Entrez Gene	999(Human); 12550(Mouse); 83502(Rat)
SwissProt	P12830(Human); P09803(Mouse); Q9R0T4(Rat)

\*AREX continuously optimizes our products. Webpage content may not reflect the latest updates. For inquiries, please contact [info@arexbio.com](mailto:info@arexbio.com) or your local distributor.

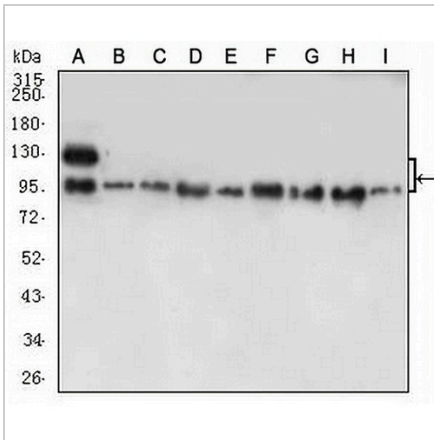
\*Clone Number, Reactivity, Source/Host and Clonality can be found in the product name and Key Features section above.

**DATASHEET**

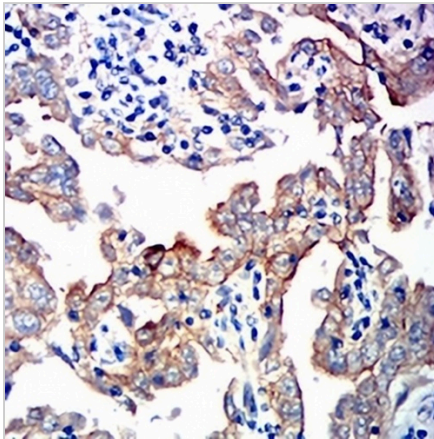
**E Cadherin Mouse Monoclonal Antibody(C2618)**

CAT. NO. AMA02230

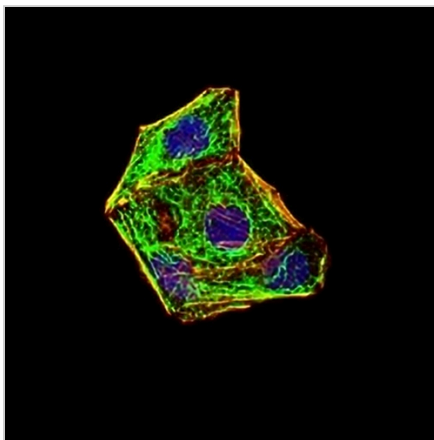
**DATA**



Western blot analysis of E Cadherin expression in PC3 (A), A431 (B), MCF7 (C), HT29 (D), HePG2 (E), C6 (F), A549 (G), NIH/3T3 (H), C2C12 (I) whole cell lysates. (Predicted band size: 98 kD; Observed band size: 98 kD)



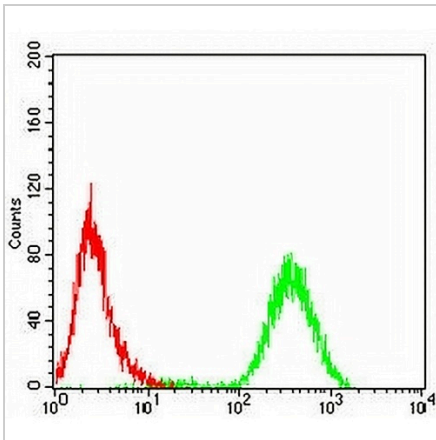
Immunohistochemical analysis of E Cadherin staining in human endometrial cancer formalin fixed paraffin embedded tissue section. The section was pre-treated using heat mediated antigen retrieval with sodium citrate buffer (pH 6.0). The section was then incubated with the antibody at room temperature and detected using an HRP conjugated compact polymer system. DAB was used as the chromogen. The section was then counterstained with haematoxylin and mounted with DPX.



Immunofluorescent analysis of E Cadherin staining in HeLa cells. Formalin-fixed cells were permeabilized with 0.1% Triton X-100 in TBS for 5-10 minutes and blocked with 3% BSA-PBS for 30 minutes at room temperature. Cells were probed with the primary antibody in 3% BSA-PBS and incubated overnight at 4 °C in a humidified chamber. Cells were washed with PBST and incubated with an AREX® Fluor 488 -conjugated secondary antibody (green) in PBS at room temperature in the dark. Phalloidin - AREX® Fluor 594 was used to stain Actin filaments (red). DAPI was used to stain the cell nuclei (blue).

**DATASHEET****E Cadherin Mouse Monoclonal Antibody(C2618)**

CAT. NO. AMA02230

**DATA (CONTINUED)**

Flow cytometric analysis of HeLa cells using Anti-E Cadherin Antibody (green) and negative control (red).

**STORAGE**

Store at 4°C short term. For long term storage, store at -20°C, avoiding freeze/thaw cycles.

**NOTE**

For Research Use Only. Not for diagnostic, therapeutics, prophylactic or in vivo use.