

## DATASHEET

# C/EBP alpha Mouse Monoclonal Antibody(C2630)

CAT. NO. AMA02242

### KEY FEATURES

Target	C/EBP alpha	Source / Host	Mouse
Reactivity	Human	Clonality	Monoclonal
Applications	WB, FC	Conjugation	Unconjugated
Form / Buffer	Mouse IgG1. Liquid in PBS, pH 7.3, 30% glycerol, and 0.01% sodium azide.	Storage	at-20°C

### BACKGROUND

Transcription factor that coordinates proliferation arrest and the differentiation of myeloid progenitors, adipocytes, hepatocytes, and cells of the lung and the placenta. Binds directly to the consensus DNA sequence 5'-T[**TG**]NNGNAA[**TG**]-3' acting as an activator on distinct target genes. During early embryogenesis, plays essential and redundant functions with CEBPB. Essential for the transition from common myeloid progenitors (CMP) to granulocyte/monocyte progenitors (GMP). Critical for the proper development of the liver and the lung. Necessary for terminal adipocyte differentiation, is required for postnatal maintenance of systemic energy homeostasis and lipid storage.

### APPLICATION

To ensure optimal assay performance, AREX recommends conducting reagent titration tailored to each testing system for optimal detection results.

WB	1:500 - 1:1000
IHC	1:100 - 1:500
FC	1:100 - 1:200

\*Results are sample-specific. Please refer to your local assay conditions and test parameters for reference.

### PRODUCT OVERVIEW

Description	Mouse monoclonal to C/EBP alpha
Specificity	Recognizes endogenous levels of C/EBP alpha protein
Antibody Type	Primary antibody
Immunogen	Recombinant fusion protein of human C/EBP alpha expressed in E. Coli
Purification	This antibody is purified through a protein G column.
Molecular Weight	Predicted: 38 kD; Observed: 44 kD
Form/Buffer	Mouse IgG1. Liquid in PBS, pH 7.3, 30% glycerol, and 0.01% sodium azide.
Alternative Names	CCAAT/enhancer-binding protein alpha; C/EBP alpha
Gene Symbol	CEBPA
Entrez Gene	1050(Human)
SwissProt	P49715(Human)

\*AREX continuously optimizes our products. Webpage content may not reflect the latest updates. For inquiries, please contact [info@arexbio.com](mailto:info@arexbio.com) or your local distributor.

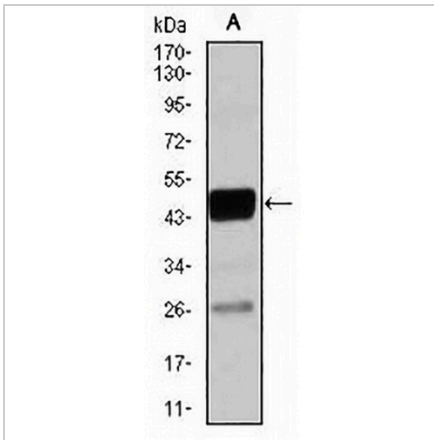
\*Clone Number, Reactivity, Source/Host and Clonality can be found in the product name and Key Features section above.

**DATASHEET**

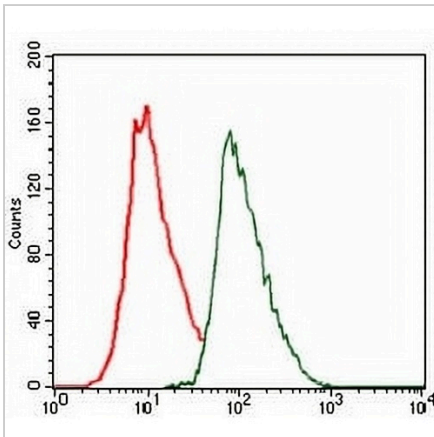
**C/EBP alpha Mouse Monoclonal Antibody(C2630)**

CAT. NO. AMA02242

**DATA**



Western blot analysis of C/EBP alpha expression in THP1 (A) whole cell lysates. (Predicted band size: 38 kD; Observed band size: 44 kD)



Flow cytometric analysis of HeLa cells using Anti-C/EBP alpha Antibody (green) and negative control (red).

**STORAGE**

Store at 4°C short term. For long term storage, store at -20°C, avoiding freeze/thaw cycles.

**NOTE**

For Research Use Only. Not for diagnostic, therapeutics, prophylactic or in vivo use.