

DATASHEET

CHD3 Mouse Monoclonal Antibody(C2633)

CAT. NO. AMA02245

KEY FEATURES

Target	CHD3	Source / Host	Mouse
Reactivity	Human, Mouse	Clonality	Monoclonal
Applications	WB, IHC, IF/ICC, FC	Conjugation	Unconjugated
Form / Buffer	Mouse IgG1. Liquid in PBS, pH 7.3, 30% glycerol, and 0.01% sodium azide.	Storage	at-20°C

BACKGROUND

ATP-dependent chromatin-remodeling factor that binds and distorts nucleosomal DNA . Acts as a component of the histone deacetylase NuRD complex which participates in the remodeling of chromatin . Involved in transcriptional repression as part of the NuRD complex . Required for anchoring centrosomal pericentrin in both interphase and mitosis, for spindle organization and centrosome integrity .

APPLICATION

To ensure optimal assay performance, AREX recommends conducting reagent titration tailored to each testing system for optimal detection results.

WB	1:500 - 1:1000
IHC	1:100 - 1:500
IF/ICC	1:100 - 1:500
FC	1:100 - 1:200

*Results are sample-specific. Please refer to your local assay conditions and test parameters for reference.

PRODUCT OVERVIEW

Description	Mouse monoclonal to CHD3
Specificity	Recognizes endogenous levels of CHD3 protein
Antibody Type	Primary antibody
Immunogen	Recombinant fusion protein of human CHD3 expressed in E. Coli
Purification	This antibody is purified through a protein G column.
Molecular Weight	Predicted: 226 kD; Observed: 220 kD kD
Form/Buffer	Mouse IgG1. Liquid in PBS, pH 7.3, 30% glycerol, and 0.01% sodium azide.
Alternative Names	Chromodomain-hellC,ase-DNA-binding protein 3; CHD-3; ATP-dependent hellC,ase CHD3; Mi-2 autoantigen 240 kDa protein; Mi2-alpha; Zinc finger hellC,ase; hZFH
Gene Symbol	CHD3
Entrez Gene	1107(Human)
SwissProt	Q12873(Human)

*AREX continuously optimizes our products. Webpage content may not reflect the latest updates. For inquiries, please contact info@arexbio.com or your local distributor.

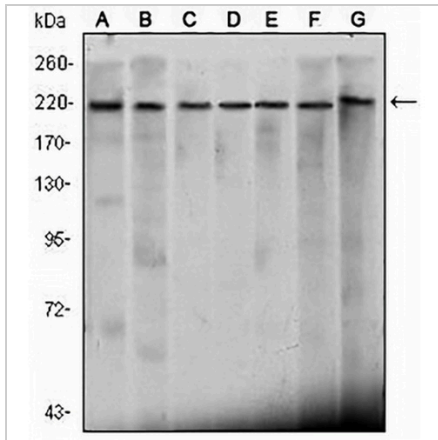
*Clone Number, Reactivity, Source/Host and Clonality can be found in the product name and Key Features section above.

DATASHEET

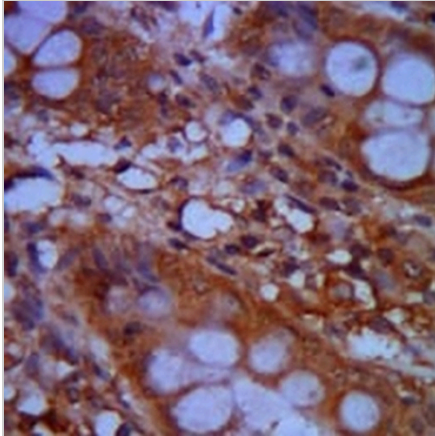
CHD3 Mouse Monoclonal Antibody(C2633)

CAT. NO. AMA02245

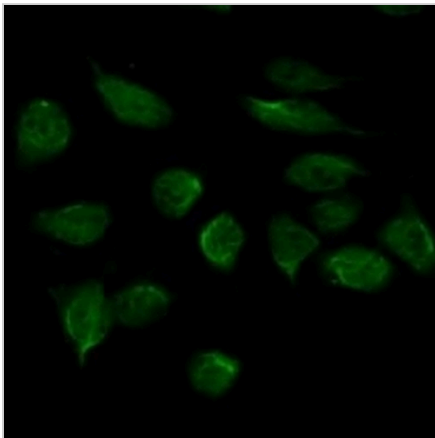
DATA



Western blot analysis of CHD3 expression in HeLa (A), K562 (B), Jurkat (C), NTERA2 (D), HEK293 (E), Raji (F), mouse brain (G) whole cell lysates. (Predicted band size: 226 kD; Observed band size: 220 kD)



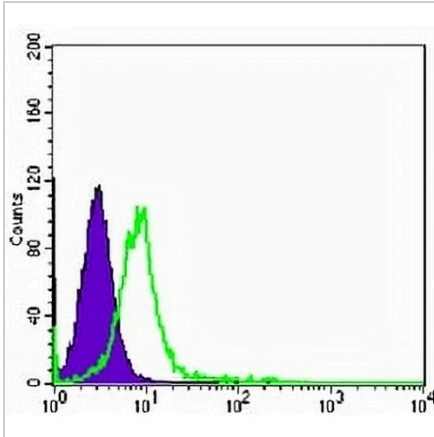
Immunohistochemical analysis of CHD3 staining in human colon cancer formalin fixed paraffin embedded tissue section. The section was pre-treated using heat mediated antigen retrieval with sodium citrate buffer (pH 6.0). The section was then incubated with the antibody at room temperature and detected using an HRP conjugated compact polymer system. DAB was used as the chromogen. The section was then counterstained with haematoxylin and mounted with DPX.



Immunofluorescent analysis of CHD3 staining in HeLa cells. Formalin-fixed cells were permeabilized with 0.1% Triton X-100 in TBS for 5-10 minutes and blocked with 3% BSA-PBS for 30 minutes at room temperature. Cells were probed with the primary antibody in 3% BSA-PBS and incubated overnight at 4 °C in a humidified chamber. Cells were washed with PBST and incubated with an AREX® Fluor 488 -conjugated secondary antibody (green) in PBS at room temperature in the dark. Phalloidin - AREX® Fluor 594 was used to stain Actin filaments (red). DAPI was used to stain the cell nuclei (blue).

DATASHEET**CHD3 Mouse Monoclonal Antibody(C2633)**

CAT. NO. AMA02245

DATA (CONTINUED)

Flow cytometric analysis of K562 cells using Anti-CHD3 Antibody (green) and negative control (red).

STORAGE

Store at 4°C short term. For long term storage, store at -20°C, avoiding freeze/thaw cycles.

NOTE

For Research Use Only. Not for diagnostic, therapeutics, prophylactic or in vivo use.