

DATASHEET

MDL-1 Mouse Monoclonal Antibody(C2644)

CAT. NO. AMA02256

KEY FEATURES

Target	MDL-1	Source / Host	Mouse
Reactivity	Human	Clonality	Monoclonal
Applications	WB, FC	Conjugation	Unconjugated
Form / Buffer	Mouse IgG1. Liquid in PBS, pH 7.3, 30% glycerol, and 0.01% sodium azide.	Storage	at-20°C

BACKGROUND

Functions as a positive regulator of osteoclastogenesis . Cell surface receptor that signals via TYROBP . Regulates inflammatory responses .

APPLICATION

To ensure optimal assay performance, AREX recommends conducting reagent titration tailored to each testing system for optimal detection results.

WB	1:500 - 1:1000
FC	1:100 - 1:200

*Results are sample-specific. Please refer to your local assay conditions and test parameters for reference.

PRODUCT OVERVIEW

Description	Mouse monoclonal to MDL-1
Specificity	Recognizes endogenous levels of MDL-1 protein
Antibody Type	Primary antibody
Immunogen	Recombinant fusion protein of human MDL-1 expressed in E. Coli
Purification	This antibody is purified through a protein G column.
Molecular Weight	Predicted: 22 kD; Observed: 34 kD kD
Form/Buffer	Mouse IgG1. Liquid in PBS, pH 7.3, 30% glycerol, and 0.01% sodium azide.
Alternative Names	CLECSF5; MDL1; C-type lectin domain family 5 member A; C-type lectin superfamily member 5; Myeloid DAP12-associating lectin 1; MDL-1
Gene Symbol	CLEC5A
Entrez Gene	23601(Human)
SwissProt	Q9NY25(Human)

*AREX continuously optimizes our products. Webpage content may not reflect the latest updates. For inquiries, please contact info@arexbio.com or your local distributor.

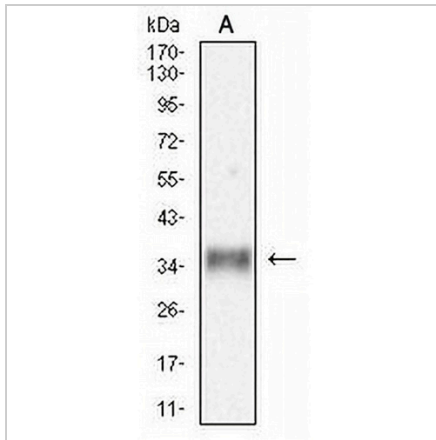
*Clone Number, Reactivity, Source/Host and Clonality can be found in the product name and Key Features section above.

DATASHEET

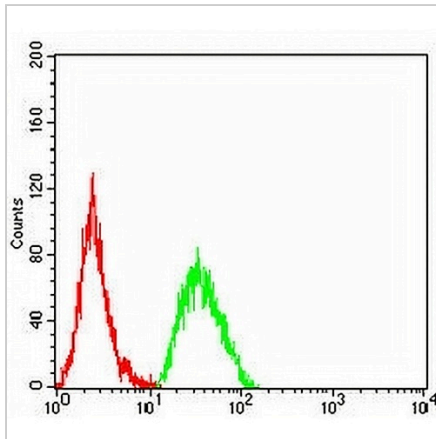
MDL-1 Mouse Monoclonal Antibody(C2644)

CAT. NO. AMA02256

DATA



Western blot analysis of MDL-1 expression in THP1 (A) whole cell lysates. (Predicted band size: 22 kD; Observed band size: 34 kD)



Flow cytometric analysis of U937 cells using Anti-MDL-1 Antibody (green) and negative control (red).

STORAGE

Store at 4°C short term. For long term storage, store at -20°C, avoiding freeze/thaw cycles.

NOTE

For Research Use Only. Not for diagnostic, therapeutics, prophylactic or in vivo use.