

DATASHEET

Collagen 2 alpha 1 Mouse Monoclonal Antibody(C2647)

CAT. NO. AMA02259

KEY FEATURES

Target	Collagen 2 alpha 1	Source / Host	Mouse
Reactivity	Human	Clonality	Monoclonal
Applications	WB, IF/ICC, FC	Conjugation	Unconjugated
Form / Buffer	Mouse IgG1. Liquid in PBS, pH 7.3, 30% glycerol, and 0.01% sodium azide.	Storage	at-20°C

BACKGROUND

Type II collagen is specific for cartilaginous tissues. It is essential for the normal embryonic development of the skeleton, for linear growth and for the ability of cartilage to resist compressive forces.

APPLICATION

To ensure optimal assay performance, AREX recommends conducting reagent titration tailored to each testing system for optimal detection results.

WB	1:500 - 1:1000
IF/ICC	1:50 - 1:100
FC	1:100 - 1:200

*Results are sample-specific. Please refer to your local assay conditions and test parameters for reference.

PRODUCT OVERVIEW

Description	Mouse monoclonal to Collagen 2 alpha 1
Specificity	Recognizes endogenous levels of Collagen 2 alpha 1 protein
Antibody Type	Primary antibody
Immunogen	Recombinant fusion protein of human Collagen 2 alpha 1 expressed in HEK293
Purification	This antibody is purified through a protein G column.
Molecular Weight	Predicted: 142 kD; Observed: 130 kD kD
Form/Buffer	Mouse IgG1. Liquid in PBS, pH 7.3, 30% glycerol, and 0.01% sodium azide.
Alternative Names	Collagen alpha-1(II) chain; Alpha-1 type II collagen
Gene Symbol	COL2A1
Entrez Gene	1280(Human)
SwissProt	P02458(Human)

*AREX continuously optimizes our products. Webpage content may not reflect the latest updates. For inquiries, please contact info@arexbio.com or your local distributor.

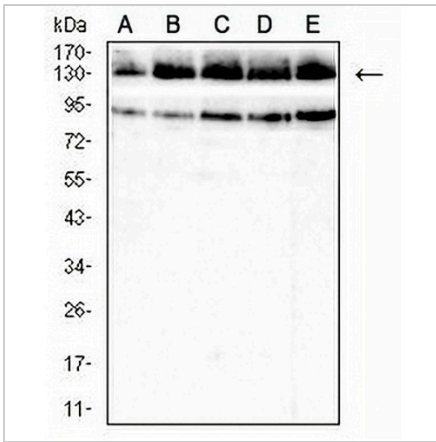
*Clone Number, Reactivity, Source/Host and Clonality can be found in the product name and Key Features section above.

DATASHEET

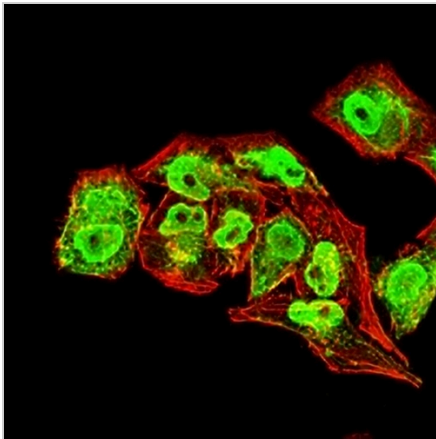
Collagen 2 alpha 1 Mouse Monoclonal Antibody(C2647)

CAT. NO. AMA02259

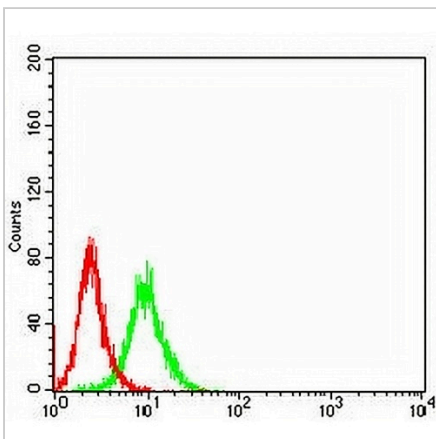
DATA



Western blot analysis of Collagen 2 alpha 1 expression in HeLa (A), MCF7 (B), A549 (C), Jurkat (D), K562 (E) whole cell lysates. (Predicted band size: 142 kD; Observed band size: 130 kD)



Immunofluorescent analysis of Collagen 2 alpha 1 staining in HeLa cells. Formalin-fixed cells were permeabilized with 0.1% Triton X-100 in TBS for 5-10 minutes and blocked with 3% BSA-PBS for 30 minutes at room temperature. Cells were probed with the primary antibody in 3% BSA-PBS and incubated overnight at 4 °C in a humidified chamber. Cells were washed with PBST and incubated with an AREX® Fluor 488 -conjugated secondary antibody (green) in PBS at room temperature in the dark. Phalloidin - AREX® Fluor 594 was used to stain Actin filaments (red). DAPI was used to stain the cell nuclei (blue).



Flow cytometric analysis of Jurkat cells using Anti-Collagen 2 alpha 1 Antibody (green) and negative control (red).

STORAGE

Store at 4°C short term. For long term storage, store at -20°C, avoiding freeze/thaw cycles.

NOTE

For Research Use Only. Not for diagnostic, therapeutics, prophylactic or in vivo use.