

DATASHEET

CPT2 Mouse Monoclonal Antibody(C2648)

CAT. NO. AMA02260

KEY FEATURES

Target	CPT2	Source / Host	Mouse
Reactivity	Human, Mouse, Rat	Clonality	Monoclonal
Applications	WB, FC	Conjugation	Unconjugated
Form / Buffer	Mouse IgG2a. Liquid in PBS, pH 7.3, 30% glycerol, and 0.01% sodium azide.	Storage	at-20°C

BACKGROUND

Involved in the intramitochondrial synthesis of acylcarnitines from accumulated acyl-CoA metabolites . Reconverts acylcarnitines back into the respective acyl-CoA esters that can then undergo beta-oxidation, an essential step for the mitochondrial uptake of long-chain fatty acids and their subsequent beta-oxidation in the mitochondrion. Active with medium (C8-C12) and long-chain (C14-C18) acyl-CoA esters .

APPLICATION

To ensure optimal assay performance, AREX recommends conducting reagent titration tailored to each testing system for optimal detection results.

WB	1:500 - 1:1000
FC	1:100 - 1:200

*Results are sample-specific. Please refer to your local assay conditions and test parameters for reference.

PRODUCT OVERVIEW

Description	Mouse monoclonal to CPT2
Specificity	Recognizes endogenous levels of CPT2 protein
Antibody Type	Primary antibody
Immunogen	Recombinant fusion protein of human CPT2 expressed in E. Coli
Purification	This antibody is purified through a protein G column.
Molecular Weight	Predicted: 74 kD; Observed: 78 kD
Form/Buffer	Mouse IgG2a. Liquid in PBS, pH 7.3, 30% glycerol, and 0.01% sodium azide.
Alternative Names	CPT1; Carnitine O-palmitoyltransferase 2, mitochondrial; Carnitine palmitoyltransferase II; CPT II
Gene Symbol	CPT2
Entrez Gene	1376(Human); 12896(Mouse); 25413(Rat)
SwissProt	P23786(Human); P52825(Mouse); P18886(Rat)

*AREX continuously optimizes our products. Webpage content may not reflect the latest updates. For inquiries, please contact info@arexbio.com or your local distributor.

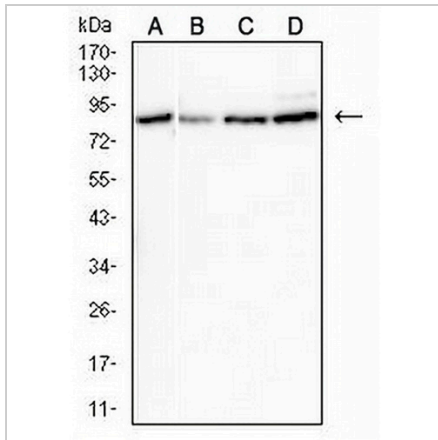
*Clone Number, Reactivity, Source/Host and Clonality can be found in the product name and Key Features section above.

DATASHEET

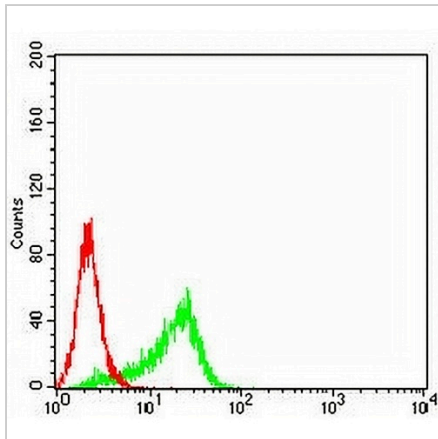
CPT2 Mouse Monoclonal Antibody(C2648)

CAT. NO. AMA02260

DATA



Western blot analysis of CPT2 expression in MCF7 (A), HeLa (B), NIH/3T3 (C), PC12 (D) whole cell lysates. (Predicted band size: 74 kD; Observed band size: 78 kD)



Flow cytometric analysis of HeLa cells using Anti-CPT2 Antibody (green) and negative control (red).

STORAGE

Store at 4°C short term. For long term storage, store at -20°C, avoiding freeze/thaw cycles.

NOTE

For Research Use Only. Not for diagnostic, therapeutics, prophylactic or in vivo use.