

## DATASHEET

# E2F1 Mouse Monoclonal Antibody(C2675)

CAT. NO. AMA02287

### KEY FEATURES

Target	E2F1	Source / Host	Mouse
Reactivity	Human, Mouse	Clonality	Monoclonal
Applications	WB, IHC, FC	Conjugation	Unconjugated
Form / Buffer	Mouse IgG1. Liquid in PBS, pH 7.3, 30% glycerol, and 0.01% sodium azide.	Storage	at-20°C

### BACKGROUND

Transcription activator that binds DNA cooperatively with DP proteins through the E2 recognition site, 5'-TTTC[CG]CGC-3' found in the promoter region of a number of genes whose products are involved in cell cycle regulation or in DNA replication . The DRTF1/E2F complex functions in the control of cell-cycle progression from G1 to S phase . E2F1 binds preferentially RB1 in a cell-cycle dependent manner . It can mediate both cell proliferation and TP53/p53-dependent apoptosis . Blocks adipocyte differentiation by binding to specific promoters repressing CEBPA binding to its target gene promoters . Directly activates transcription of PEG10 . Positively regulates transcription of RRP1B .

### APPLICATION

To ensure optimal assay performance, AREX recommends conducting reagent titration tailored to each testing system for optimal detection results.

WB	1:500 - 1:1000
IHC	1:100 - 1:500
FC	1:100 - 1:200

\*Results are sample-specific. Please refer to your local assay conditions and test parameters for reference.

### PRODUCT OVERVIEW

Description	Mouse monoclonal to E2F1
Specificity	Recognizes endogenous levels of E2F1 protein
Antibody Type	Primary antibody
Immunogen	Recombinant fusion protein of human E2F1 expressed in E. Coli
Purification	This antibody is purified through a protein G column.
Molecular Weight	Predicted: 47 kD; Observed: 47 kD
Form/Buffer	Mouse IgG1. Liquid in PBS, pH 7.3, 30% glycerol, and 0.01% sodium azide.
Alternative Names	RBBP3; Transcription factor E2F1; E2F-1; PBR3; Retinoblastoma-associated protein 1; RBAP-1; Retinoblastoma-binding protein 3; RBBP-3; pRB-binding protein E2F-1
Gene Symbol	E2F1
Entrez Gene	1869(Human)
SwissProt	Q01094(Human); Q61501(Mouse)

\*AREX continuously optimizes our products. Webpage content may not reflect the latest updates. For inquiries, please contact [info@arexbio.com](mailto:info@arexbio.com) or your local distributor.

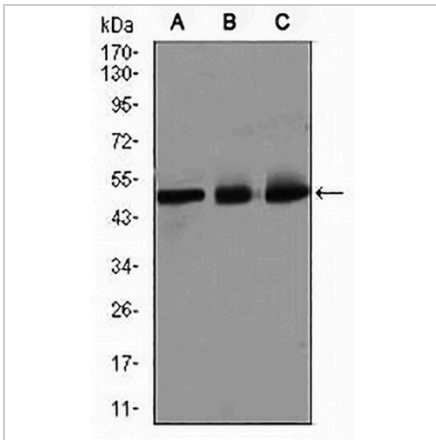
\*Clone Number, Reactivity, Source/Host and Clonality can be found in the product name and Key Features section above.

**DATASHEET**

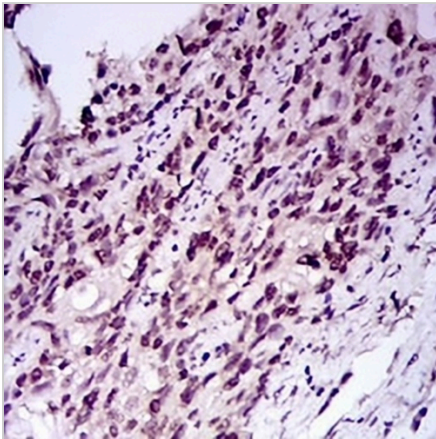
**E2F1 Mouse Monoclonal Antibody(C2675)**

CAT. NO. AMA02287

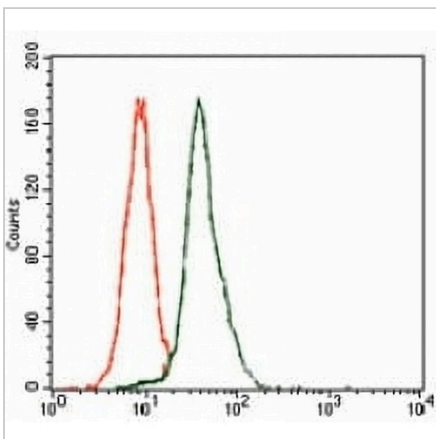
**DATA**



Western blot analysis of E2F1 expression in HeLa (A), SKNSH (B), NIH3T3 (C) whole cell lysates. (Predicted band size: 47 kD; Observed band size: 47 kD)



Immunohistochemical analysis of E2F1 staining in human esophageal cancer formalin fixed paraffin embedded tissue section. The section was pre-treated using heat mediated antigen retrieval with sodium citrate buffer (pH 6.0). The section was then incubated with the antibody at room temperature and detected using an HRP conjugated compact polymer system. DAB was used as the chromogen. The section was then counterstained with haematoxylin and mounted with DPX.



Flow cytometric analysis of HeLa cells using Anti-E2F1 Antibody (green) and negative control (red).

**STORAGE**

Store at 4°C short term. For long term storage, store at -20°C, avoiding freeze/thaw cycles.

**NOTE**

For Research Use Only. Not for diagnostic, therapeutics, prophylactic or in vivo use.