

DATASHEET

eIF2 alpha Mouse Monoclonal Antibody(C2677)

CAT. NO. AMA02289

KEY FEATURES

Target	eIF2 alpha	Source / Host	Mouse
Reactivity	Human, Mouse, Rat, Monkey	Clonality	Monoclonal
Applications	WB, IHC, FC	Conjugation	Unconjugated
Form / Buffer	Mouse IgG1. Liquid in PBS, pH 7.3, 30% glycerol, and 0.01% sodium azide.	Storage	at-20°C

BACKGROUND

Functions in the early steps of protein synthesis of a small number of specific mRNAs. Acts by directing the binding of methionyl-tRNA_i to 40S ribosomal subunits. In contrast to the eIF-2 complex, it binds methionyl-tRNA_i to 40S subunits in a codon-dependent manner, whereas the eIF-2 complex binds methionyl-tRNA_i to 40S subunits in a GTP-dependent manner.

APPLICATION

To ensure optimal assay performance, AREX recommends conducting reagent titration tailored to each testing system for optimal detection results.

WB	1:500 - 1:1000
IHC	1:100 - 1:500
FC	1:100 - 1:200

*Results are sample-specific. Please refer to your local assay conditions and test parameters for reference.

PRODUCT OVERVIEW

Description	Mouse monoclonal to eIF2 alpha
Specificity	Recognizes endogenous levels of eIF2 alpha protein
Antibody Type	Primary antibody
Immunogen	Recombinant fusion protein of human eIF2 alpha expressed in E. Coli
Purification	This antibody is purified through a protein G column.
Molecular Weight	Predicted: 65 kD; Observed: 65 kD
Form/Buffer	Mouse IgG1. Liquid in PBS, pH 7.3, 30% glycerol, and 0.01% sodium azide.
Alternative Names	EukaryotIC, translation initiation factor 2A; eIF-2A; 65 kDa eukaryotIC, translation initiation factor 2A
Gene Symbol	EIF2A
Entrez Gene	83939(Human); 229317(Mouse)
SwissProt	Q9BY44(Human); Q8BJW6(Mouse)

*AREX continuously optimizes our products. Webpage content may not reflect the latest updates. For inquiries, please contact info@arexbio.com or your local distributor.

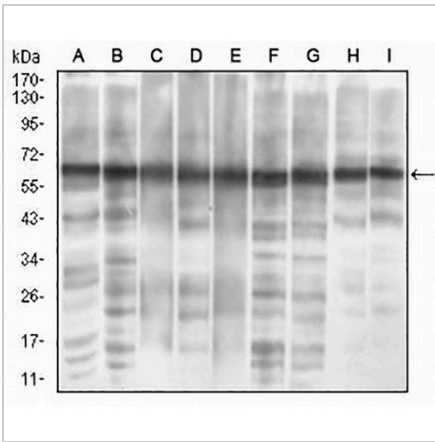
*Clone Number, Reactivity, Source/Host and Clonality can be found in the product name and Key Features section above.

DATASHEET

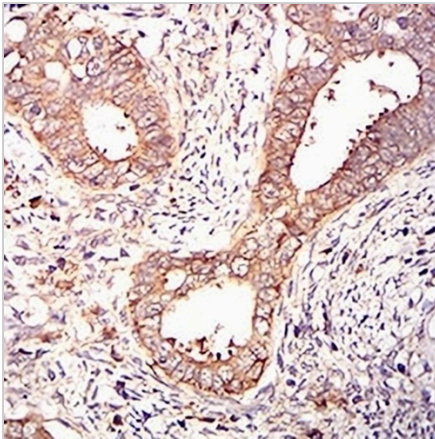
eIF2 alpha Mouse Monoclonal Antibody(C2677)

CAT. NO. AMA02289

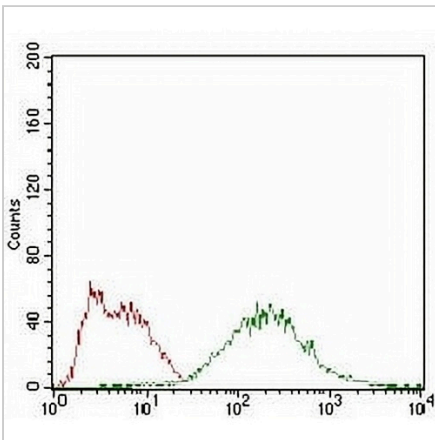
DATA



Western blot analysis of eIF2 alpha expression in MCF7 (A), PC12 (B), HepG2 (C), Hela (D), COS7 (E), K562 (F), Jurkat (G), A431 (H), NIH/3T3 (I) whole cell lysates. (Predicted band size: 65 kD; Observed band size: 65 kD)



Immunohistochemical analysis of eIF2 alpha staining in human cervical cancer formalin fixed paraffin embedded tissue section. The section was pre-treated using heat mediated antigen retrieval with sodium citrate buffer (pH 6.0). The section was then incubated with the antibody at room temperature and detected using an HRP conjugated compact polymer system. DAB was used as the chromogen. The section was then counterstained with haematoxylin and mounted with DPX.



Flow cytometric analysis of HepG2 cells using Anti-eIF2 alpha Antibody (green) and negative control (red).

STORAGE

Store at 4°C short term. For long term storage, store at -20°C, avoiding freeze/thaw cycles.

NOTE

For Research Use Only. Not for diagnostic, therapeutics, prophylactic or in vivo use.