

## DATASHEET

# ERR alpha Mouse Monoclonal Antibody(C2694)

CAT. NO. AMA02306

### KEY FEATURES

|               |  |               |              |
|---------------|--|---------------|--------------|
| Target        | ERR alpha  | Source / Host | Mouse        |
| Reactivity    | Human, Rat   | Clonality     | Monoclonal   |
| Applications  | WB, FC   | Conjugation   | Unconjugated |
| Form / Buffer | Mouse IgG1. Liquid in PBS, pH 7.3, 30% glycerol, and 0.01% sodium azide. | Storage       | at-20°C      |

### BACKGROUND

Binds to an ERR-alpha response element (ERRE) containing a single consensus half-site, 5'-TNAAGGTCA-3'. Can bind to the medium-chain acyl coenzyme A dehydrogenase (MCAD) response element NRRE-1 and may act as an important regulator of MCAD promoter. Binds to the C1 region of the lactoferrin gene promoter. Requires dimerization and the coactivator, PGC-1A, for full activity. The ERRalpha/PGC1alpha complex is a regulator of energy metabolism. Induces the expression of PERM1 in the skeletal muscle.

### APPLICATION

To ensure optimal assay performance, AREX recommends conducting reagent titration tailored to each testing system for optimal detection results.

|    |                |
|----|----------------|
| WB | 1:500 - 1:1000 |
| FC | 1:100 - 1:200  |

\*Results are sample-specific. Please refer to your local assay conditions and test parameters for reference.

### PRODUCT OVERVIEW

|                   |  |
|-------------------|--|
| Description       | Mouse monoclonal to ERR alpha  |
| Specificity       | Recognizes endogenous levels of ERR alpha protein  |
| Antibody Type     | Primary antibody   |
| Immunogen         | Recombinant fusion protein of human ERR alpha expressed in E. Coli   |
| Purification      | This antibody is purified through a protein G column.  |
| Molecular Weight  | Predicted: 46 kD; Observed: 46 kD  |
| Form/Buffer       | Mouse IgG1. Liquid in PBS, pH 7.3, 30% glycerol, and 0.01% sodium azide.   |
| Alternative Names | ERR1; ESRL1; NR3B1; Steroid hormone receptor ERR1; Estrogen receptor-like 1; Estrogen-related receptor alpha; ERR-alpha; Nuclear receptor subfamily 3 group B member 1 |
| Gene Symbol       | ESRRA  |
| Entrez Gene       | 2101(Human); 293701(Rat)   |
| SwissProt         | P11474(Human); Q5QJV7(Rat)   |

\*AREX continuously optimizes our products. Webpage content may not reflect the latest updates. For inquiries, please contact [info@arexbio.com](mailto:info@arexbio.com) or your local distributor.

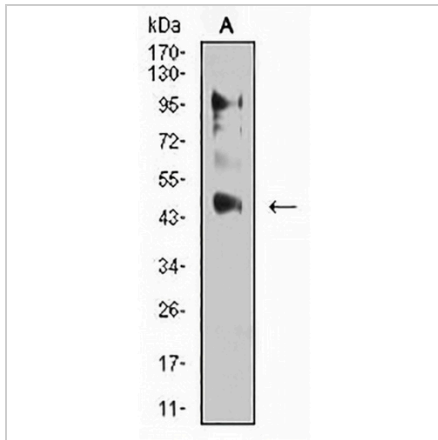
\*Clone Number, Reactivity, Source/Host and Clonality can be found in the product name and Key Features section above.

**DATASHEET**

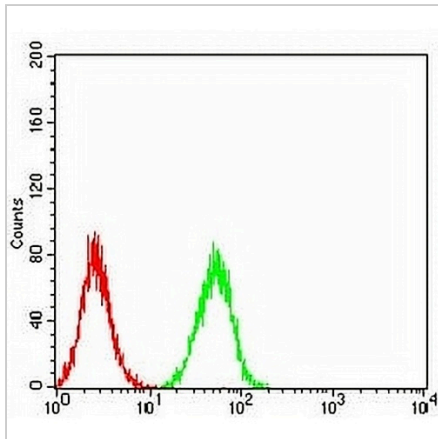
**ERR alpha Mouse Monoclonal Antibody(C2694)**

CAT. NO. AMA02306

**DATA**



Western blot analysis of ERR alpha expression in C6 (A) whole cell lysates. (Predicted band size: 46 kD; Observed band size: 46 kD)



Flow cytometric analysis of HeLa cells using Anti-ERR alpha Antibody (green) and negative control (red).

**STORAGE**

Store at 4°C short term. For long term storage, store at -20°C, avoiding freeze/thaw cycles.

**NOTE**

For Research Use Only. Not for diagnostic, therapeutics, prophylactic or in vivo use.