

## DATASHEET

# eTF1 Mouse Monoclonal Antibody(C2695)

CAT. NO. AMA02307

### KEY FEATURES

Target	eTF1	Source / Host	Mouse
Reactivity	Human	Clonality	Monoclonal
Applications	WB, FC	Conjugation	Unconjugated
Form / Buffer	Mouse IgG1. Liquid in PBS, pH 7.3, 30% glycerol, and 0.01% sodium azide.	Storage	at-20°C

### BACKGROUND

Component of the eRF1-eRF3-GTP ternary complex, a ternary complex that mediates translation termination in response to the termination codons. The eRF1-eRF3-GTP complex binds to a stop codon in the ribosomal A-site. eRF1/eRF1 is responsible for stop codon recognition and inducing hydrolysis of peptidyl-tRNA. Following GTP hydrolysis, eRF3 (GSPT1/ERF3A or GSPT2/ERF3B) dissociates, permitting eRF1/eRF1 to accommodate fully in the A-site and mediate hydrolysis of peptidyl-tRNA. Component of the transient SURF complex which recruits UPF1 to stalled ribosomes in the context of nonsense-mediated decay (NMD) of mRNAs containing premature stop codons.

### APPLICATION

To ensure optimal assay performance, AREX recommends conducting reagent titration tailored to each testing system for optimal detection results.

WB	1:500 - 1:1000
FC	1:100 - 1:200

\*Results are sample-specific. Please refer to your local assay conditions and test parameters for reference.

### PRODUCT OVERVIEW

Description	Mouse monoclonal to eTF1
Specificity	Recognizes endogenous levels of eTF1 protein
Antibody Type	Primary antibody
Immunogen	Recombinant fusion protein of human eTF1 expressed in E. Coli
Purification	This antibody is purified through a protein G column.
Molecular Weight	Predicted: 49 kD; Observed: 52 kD
Form/Buffer	Mouse IgG1. Liquid in PBS, pH 7.3, 30% glycerol, and 0.01% sodium azide.
Alternative Names	ERF1; RF1; SUP45L1; EukaryotIC, peptide chain release factor subunit 1; EukaryotIC, release factor 1; eRF1; Protein Cl1; TB3-1
Gene Symbol	ETF1
Entrez Gene	2107(Human)
SwissProt	P62495(Human)

\*AREX continuously optimizes our products. Webpage content may not reflect the latest updates. For inquiries, please contact [info@arexbio.com](mailto:info@arexbio.com) or your local distributor.

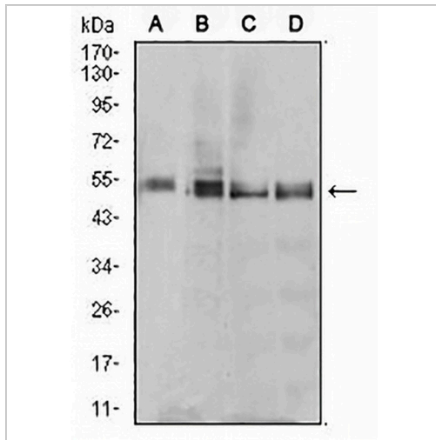
\*Clone Number, Reactivity, Source/Host and Clonality can be found in the product name and Key Features section above.

**DATASHEET**

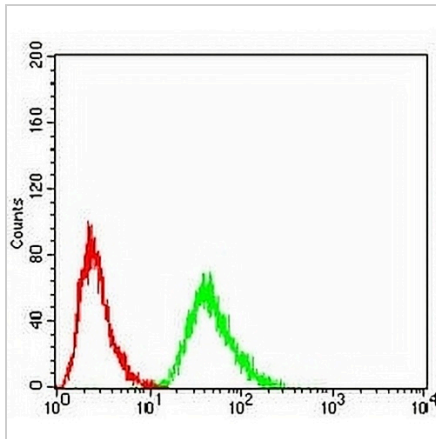
**eTF1 Mouse Monoclonal Antibody(C2695)**

CAT. NO. AMA02307

**DATA**



Western blot analysis of eTF1 expression in MCF7 (A), T47D (B), MOLT4 (C), Raji (D) whole cell lysates. (Predicted band size: 49 kD; Observed band size: 52 kD)



Flow cytometric analysis of HeLa cells using Anti-eTF1 Antibody (green) and negative control (red).

**STORAGE**

Store at 4°C short term. For long term storage, store at -20°C, avoiding freeze/thaw cycles.

**NOTE**

For Research Use Only. Not for diagnostic, therapeutics, prophylactic or in vivo use.