

DATASHEET

ETFA Mouse Monoclonal Antibody(C2696)

CAT. NO. AMA02308

KEY FEATURES

Target	ETFA	Source / Host	Mouse
Reactivity	Human	Clonality	Monoclonal
Applications	WB, IHC, IF/ICC, FC	Conjugation	Unconjugated
Form / Buffer	Mouse IgG2a. Liquid in PBS, pH 7.3, 30% glycerol, and 0.01% sodium azide.	Storage	at-20°C

BACKGROUND

Heterodimeric electron transfer flavoprotein that accepts electrons from several mitochondrial dehydrogenases, including acyl-CoA dehydrogenases, glutaryl-CoA and sarcosine dehydrogenase . It transfers the electrons to the main mitochondrial respiratory chain via ETF-ubiquinone oxidoreductase (ETF dehydrogenase) . Required for normal mitochondrial fatty acid oxidation and normal amino acid metabolism .

APPLICATION

To ensure optimal assay performance, AREX recommends conducting reagent titration tailored to each testing system for optimal detection results.

WB	1:500 - 1:1000
IHC	1:100 - 1:500
IF/ICC	1:100 - 1:500
FC	1:100 - 1:200

*Results are sample-specific. Please refer to your local assay conditions and test parameters for reference.

PRODUCT OVERVIEW

Description	Mouse monoclonal to ETFA
Specificity	Recognizes endogenous levels of ETFA protein
Antibody Type	Primary antibody
Immunogen	Recombinant fusion protein of human ETFA expressed in E. Coli
Purification	This antibody is purified through a protein G column.
Molecular Weight	Predicted: 35 kD; Observed: 35 kD kD
Form/Buffer	Mouse IgG2a. Liquid in PBS, pH 7.3, 30% glycerol, and 0.01% sodium azide.
Alternative Names	Electron transfer flavoprotein subunit alpha, mitochondrial; Alpha-ETF
Gene Symbol	ETFA
Entrez Gene	2108(Human)
SwissProt	P13804(Human)

*AREX continuously optimizes our products. Webpage content may not reflect the latest updates. For inquiries, please contact info@arexbio.com or your local distributor.

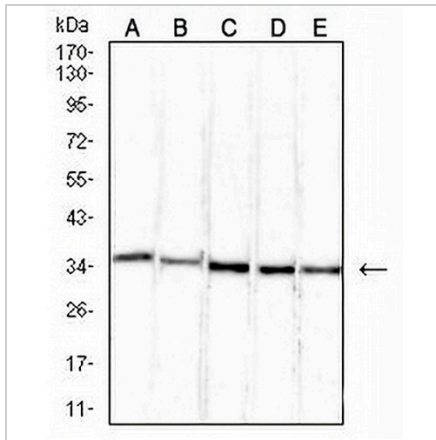
*Clone Number, Reactivity, Source/Host and Clonality can be found in the product name and Key Features section above.

DATASHEET

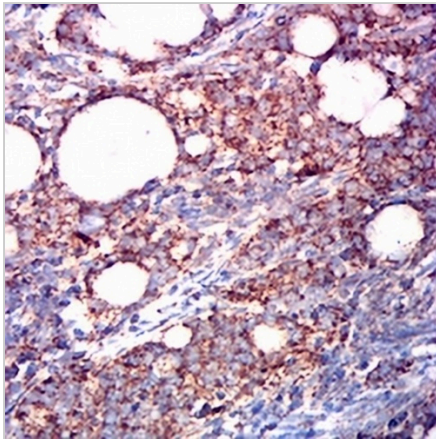
ETFA Mouse Monoclonal Antibody(C2696)

CAT. NO. AMA02308

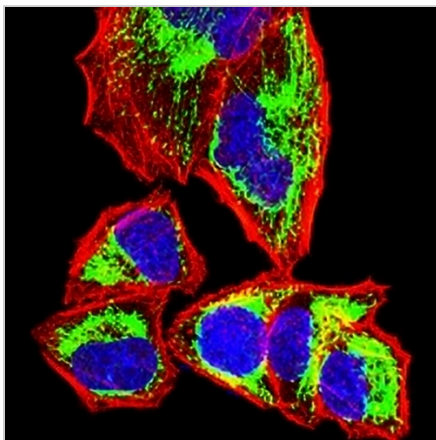
DATA



Western blot analysis of ETFA expression in HepG2 (A), A431 (B), HEK293 (C), Hela (D), MCF7 (E) whole cell lysates. (Predicted band size: 35 kD; Observed band size: 35 kD)



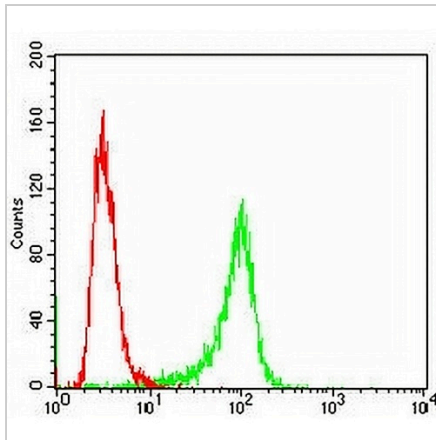
Immunohistochemical analysis of ETFA staining in human cervical cancer formalin fixed paraffin embedded tissue section. The section was pre-treated using heat mediated antigen retrieval with sodium citrate buffer (pH 6.0). The section was then incubated with the antibody at room temperature and detected using an HRP conjugated compact polymer system. DAB was used as the chromogen. The section was then counterstained with haematoxylin and mounted with DPX.



Immunofluorescent analysis of ETFA staining in Hela cells. Formalin-fixed cells were permeabilized with 0.1% Triton X-100 in TBS for 5-10 minutes and blocked with 3% BSA-PBS for 30 minutes at room temperature. Cells were probed with the primary antibody in 3% BSA-PBS and incubated overnight at 4 °C in a humidified chamber. Cells were washed with PBST and incubated with an AREX® Fluor 488 -conjugated secondary antibody (green) in PBS at room temperature in the dark. Phalloidin - AREX® Fluor 594 was used to stain Actin filaments (red). DAPI was used to stain the cell nuclei (blue).

DATASHEET**ETFA Mouse Monoclonal Antibody(C2696)**

CAT. NO. AMA02308

DATA (CONTINUED)

Flow cytometric analysis of HeLa cells using Anti-ETFA Antibody (green) and negative control (red).

STORAGE

Store at 4°C short term. For long term storage, store at -20°C, avoiding freeze/thaw cycles.

NOTE

For Research Use Only. Not for diagnostic, therapeutics, prophylactic or in vivo use.