

DATASHEET

Fc epsilon RI alpha Mouse Monoclonal Antibody(C2701)

CAT. NO. AMA02313

KEY FEATURES

Target	Fc epsilon RI alpha	Source / Host	Mouse
Reactivity	Human	Clonality	Monoclonal
Applications	WB, FC	Conjugation	Unconjugated
Form / Buffer	Mouse IgG1. Liquid in PBS, pH 7.3, 30% glycerol, and 0.01% sodium azide.	Storage	at-20°C

BACKGROUND

High-affinity receptor for immunoglobulin epsilon/IgE. Mediates IgE effector functions in myeloid cells. Upon IgE binding and antigen/allergen cross-linking initiates signaling pathways that lead to myeloid cell activation and differentiation. On mast cells, basophils and eosinophils stimulates the secretion of vasoactive amines, lipid mediators and cytokines that contribute to inflammatory response, tissue remodeling and cytotoxicity against microbes. Triggers the immediate hypersensitivity response to allergens as a host defense mechanism against helminth parasites, pathogenic bacteria and venom toxicity. When dysregulated, it can elicit harmful life-threatening allergic and anaphylactic reactions.

APPLICATION

To ensure optimal assay performance, AREX recommends conducting reagent titration tailored to each testing system for optimal detection results.

WB	1:500 - 1:1000
IHC	1:100 - 1:500
FC	1:100 - 1:200

*Results are sample-specific. Please refer to your local assay conditions and test parameters for reference.

PRODUCT OVERVIEW

Description	Mouse monoclonal to Fc epsilon RI alpha
Specificity	Recognizes endogenous levels of Fc epsilon RI alpha protein
Antibody Type	Primary antibody
Immunogen	Recombinant fusion protein of human Fc epsilon RI alpha expressed in E. Coli
Purification	This antibody is purified through a protein G column.
Molecular Weight	Predicted: 30 kD; Observed: 60 kD
Form/Buffer	Mouse IgG1. Liquid in PBS, pH 7.3, 30% glycerol, and 0.01% sodium azide.
Alternative Names	FCE1A; High affinity immunoglobulin epsilon receptor subunit alpha; Fc-epsilon RI-alpha; FcERI; IgE Fc receptor subunit alpha
Gene Symbol	FCER1A
Entrez Gene	2205(Human)
SwissProt	P12319(Human)

*AREX continuously optimizes our products. Webpage content may not reflect the latest updates. For inquiries, please contact info@arexbio.com or your local distributor.

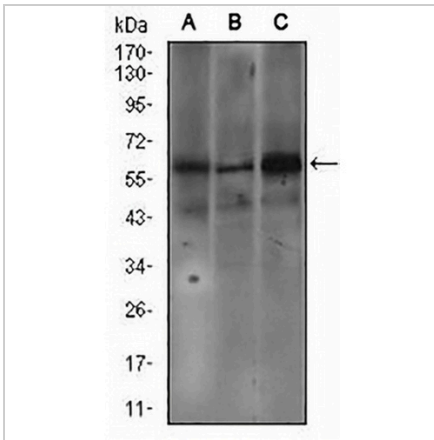
*Clone Number, Reactivity, Source/Host and Clonality can be found in the product name and Key Features section above.

DATASHEET

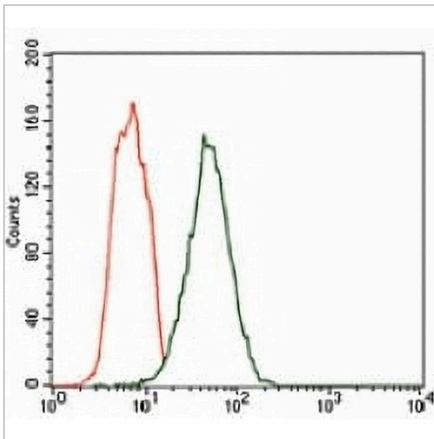
Fc epsilon RI alpha Mouse Monoclonal Antibody(C2701)

CAT. NO. AMA02313

DATA



Western blot analysis of Fc epsilon RI alpha expression in SW620 (A), A549 (B), A431 (C) whole cell lysates. (Predicted band size: 30 kD; Observed band size: 60 kD)



Flow cytometric analysis of HEK293 cells using Anti-Fc epsilon RI alpha Antibody (green) and negative control (red).

STORAGE

Store at 4°C short term. For long term storage, store at -20°C, avoiding freeze/thaw cycles.

NOTE

For Research Use Only. Not for diagnostic, therapeutics, prophylactic or in vivo use.