

DATASHEET

PSMA Mouse Monoclonal Antibody(C2703)

CAT. NO. AMA02315

KEY FEATURES

Target	PSMA	Source / Host	Mouse
Reactivity	Human	Clonality	Monoclonal
Applications	WB, FC	Conjugation	Unconjugated
Form / Buffer	Mouse IgG1. Liquid in PBS, pH 7.3, 30% glycerol, and 0.01% sodium azide.	Storage	at-20°C

BACKGROUND

Has both folate hydrolase and N-acetylated-alpha-linked-acidic dipeptidase (NAALADase) activity. Has a preference for tri-alpha-glutamate peptides. In the intestine, required for the uptake of folate. In the brain, modulates excitatory neurotransmission through the hydrolysis of the neuropeptide, N-aceylaspartylglutamate (NAAG), thereby releasing glutamate. Involved in prostate tumor progression.; Also exhibits a dipeptidyl-peptidase IV type activity. In vitro, cleaves Gly-Pro-AMC.

APPLICATION

To ensure optimal assay performance, AREX recommends conducting reagent titration tailored to each testing system for optimal detection results.

WB	1:500 - 1:1000
FC	1:100 - 1:200

*Results are sample-specific. Please refer to your local assay conditions and test parameters for reference.

PRODUCT OVERVIEW

Description	Mouse monoclonal to PSMA
Specificity	Recognizes endogenous levels of PSMA protein
Antibody Type	Primary antibody
Immunogen	Recombinant fusion protein of human PSMA expressed in E. Coli
Purification	This antibody is purified through a protein G column.
Molecular Weight	Predicted: 84 kD; Observed: 94 kD
Form/Buffer	Mouse IgG1. Liquid in PBS, pH 7.3, 30% glycerol, and 0.01% sodium azide.
Alternative Names	FOLH; NAALAD1; PSM; PSMA; Glutamate carboxypeptidase 2; Cell growth-inhibiting gene 27 protein; Folate hydrolase 1; Folylpoly-gamma-glutamate carboxypeptidase; FGCP; Glutamate carboxypeptidase II; GCPII; Membrane glutamate carboxypeptidase; mGCP; N-acetylated-alpha-linked acidIc, dipeptidase I; NAALADase I; Prostate-specific, membrane antigen; PSM; PSMA; Pteroylpoly-gamma-glutamate carboxypeptidase
Gene Symbol	FOLH1
Entrez Gene	2346(Human)
SwissProt	Q04609(Human)

*AREX continuously optimizes our products. Webpage content may not reflect the latest updates. For inquiries, please contact info@arexbio.com or your local distributor.

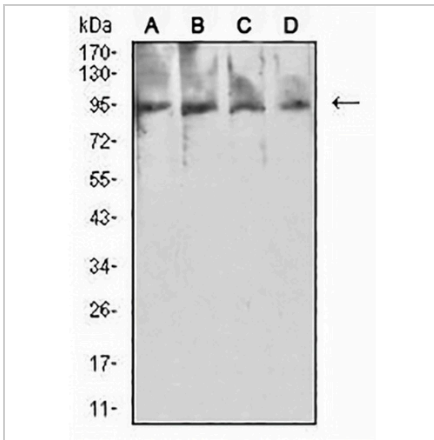
*Clone Number, Reactivity, Source/Host and Clonality can be found in the product name and Key Features section above.

DATASHEET

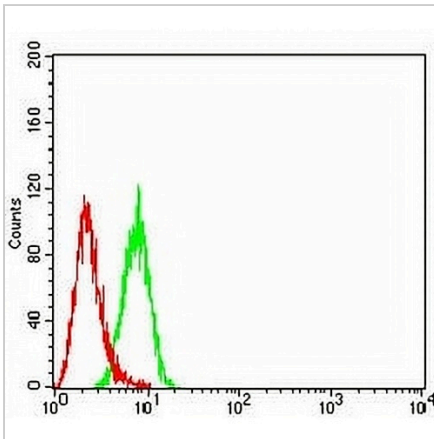
PSMA Mouse Monoclonal Antibody(C2703)

CAT. NO. AMA02315

DATA



Western blot analysis of PSMA expression in HeLa (A), MCF7 (B), HCT116 (C), GC7901 (D) whole cell lysates. (Predicted band size: 84 kD; Observed band size: 94 kD)



Flow cytometric analysis of HeLa cells using Anti-PSMA Antibody (green) and negative control (red).

STORAGE

Store at 4°C short term. For long term storage, store at -20°C, avoiding freeze/thaw cycles.

NOTE

For Research Use Only. Not for diagnostic, therapeutics, prophylactic or in vivo use.