

DATASHEET

FSH beta Mouse Monoclonal Antibody(C2707)

CAT. NO. AMA02319

KEY FEATURES

Target	FSH beta	Source / Host	Mouse
Reactivity	Human	Clonality	Monoclonal
Applications	WB, FC	Conjugation	Unconjugated
Form / Buffer	Mouse IgG1. Liquid in PBS, pH 7.3, 30% glycerol, and 0.01% sodium azide.	Storage	at-20°C

BACKGROUND

Together with the alpha chain CGA constitutes follitropin, the follicle-stimulating hormone, and provides its biological specificity to the hormone heterodimer. Binds FSHR, a G protein-coupled receptor, on target cells to activate downstream signaling pathways. Follitropin is involved in follicle development and spermatogenesis in reproductive organs.

APPLICATION

To ensure optimal assay performance, AREX recommends conducting reagent titration tailored to each testing system for optimal detection results.

WB	1:500 - 1:1000
FC	1:100 - 1:200

*Results are sample-specific. Please refer to your local assay conditions and test parameters for reference.

PRODUCT OVERVIEW

Description	Mouse monoclonal to FSH beta
Specificity	Recognizes endogenous levels of FSH beta protein
Antibody Type	Primary antibody
Immunogen	Recombinant fusion protein of human FSH beta expressed in E. Coli
Purification	This antibody is purified through a protein G column.
Molecular Weight	Predicted: 15 kD; Observed: 15 kD
Form/Buffer	Mouse IgG1. Liquid in PBS, pH 7.3, 30% glycerol, and 0.01% sodium azide.
Alternative Names	Follitropin subunit beta; FOLLIC,le-stimulating hormone beta subunit; FSH-B; FSH-beta; Follitropin beta chain
Gene Symbol	FSHB
Entrez Gene	2488(Human)
SwissProt	P01225(Human)

*AREX continuously optimizes our products. Webpage content may not reflect the latest updates. For inquiries, please contact info@arexbio.com or your local distributor.

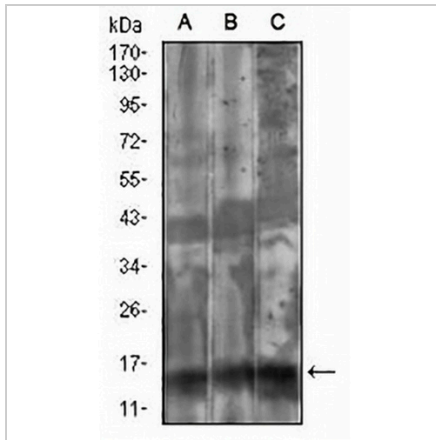
*Clone Number, Reactivity, Source/Host and Clonality can be found in the product name and Key Features section above.

DATASHEET

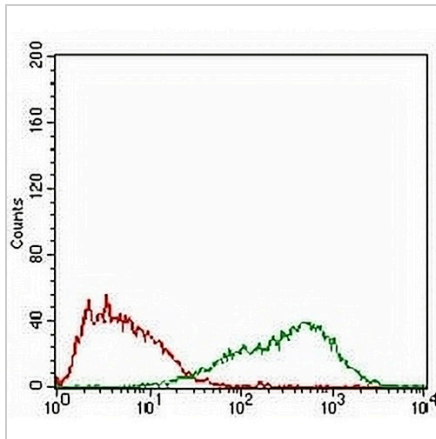
FSH beta Mouse Monoclonal Antibody(C2707)

CAT. NO. AMA02319

DATA



Western blot analysis of FSH beta expression in COS7 (A), HepG2 (B), HEK293 (C) whole cell lysates. (Predicted band size: 15 kD; Observed band size: 15 kD)



Flow cytometric analysis of HepG2 cells using Anti-FSH beta Antibody (green) and negative control (red).

STORAGE

Store at 4°C short term. For long term storage, store at -20°C, avoiding freeze/thaw cycles.

NOTE

For Research Use Only. Not for diagnostic, therapeutics, prophylactic or in vivo use.