

DATASHEET

Ferritin L Mouse Monoclonal Antibody(C2708)

CAT. NO. AMA02320

KEY FEATURES

Target	Ferritin L	Source / Host	Mouse
Reactivity	Human	Clonality	Monoclonal
Applications	WB, IHC, FC	Conjugation	Unconjugated
Form / Buffer	Mouse IgG1. Liquid in PBS, pH 7.3, 30% glycerol, and 0.01% sodium azide.	Storage	at-20°C

BACKGROUND

Stores iron in a soluble, non-toxic, readily available form. Important for iron homeostasis. Iron is taken up in the ferrous form and deposited as ferric hydroxides after oxidation. Also plays a role in delivery of iron to cells. Mediates iron uptake in capsule cells of the developing kidney . Delivery to lysosomes by the cargo receptor NCOA4 for autophagic degradation and release of iron .

APPLICATION

To ensure optimal assay performance, AREX recommends conducting reagent titration tailored to each testing system for optimal detection results.

WB	1:500 - 1:1000
IHC	1:100 - 1:500
FC	1:100 - 1:200

*Results are sample-specific. Please refer to your local assay conditions and test parameters for reference.

PRODUCT OVERVIEW

Description	Mouse monoclonal to Ferritin L
Specificity	Recognizes endogenous levels of Ferritin L protein
Antibody Type	Primary antibody
Immunogen	Recombinant fusion protein of human Ferritin L expressed in E. Coli
Purification	This antibody is purified through a protein G column.
Molecular Weight	Predicted: 20 kD; Observed: 22 kD kD
Form/Buffer	Mouse IgG1. Liquid in PBS, pH 7.3, 30% glycerol, and 0.01% sodium azide.
Alternative Names	Ferritin light chain; Ferritin L subunit
Gene Symbol	FTL
Entrez Gene	2512(Human)
SwissProt	P02792(Human)

*AREX continuously optimizes our products. Webpage content may not reflect the latest updates. For inquiries, please contact info@arexbio.com or your local distributor.

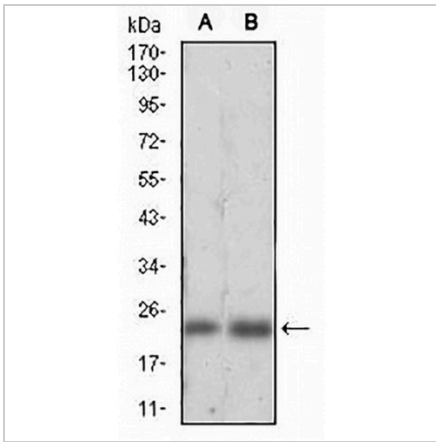
*Clone Number, Reactivity, Source/Host and Clonality can be found in the product name and Key Features section above.

DATASHEET

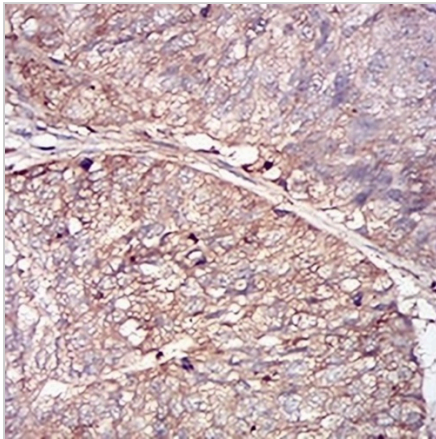
Ferritin L Mouse Monoclonal Antibody(C2708)

CAT. NO. AMA02320

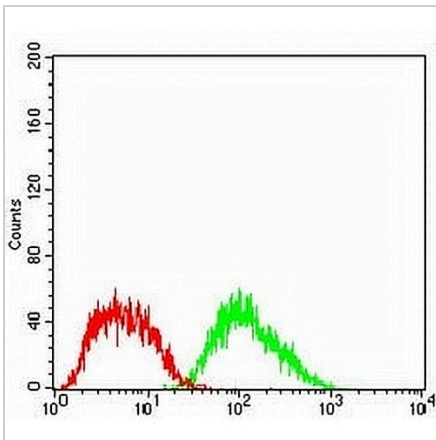
DATA



Western blot analysis of Ferritin L expression in HepG2 (A), K562 (B) whole cell lysates. (Predicted band size: 20 kD; Observed band size: 22 kD)



Immunohistochemical analysis of Ferritin L staining in human ovarian cancer formalin fixed paraffin embedded tissue section. The section was pre-treated using heat mediated antigen retrieval with sodium citrate buffer (pH 6.0). The section was then incubated with the antibody at room temperature and detected using an HRP conjugated compact polymer system. DAB was used as the chromogen. The section was then counterstained with haematoxylin and mounted with DPX.



Flow cytometric analysis of HepG2 cells using Anti-Ferritin L Antibody (green) and negative control (red).

STORAGE

Store at 4°C short term. For long term storage, store at -20°C, avoiding freeze/thaw cycles.

NOTE

For Research Use Only. Not for diagnostic, therapeutics, prophylactic or in vivo use.