

DATASHEET

GM130 Mouse Monoclonal Antibody(C2717)

CAT. NO. AMA02329

KEY FEATURES

Target	GM130	Source / Host	Mouse
Reactivity	Human	Clonality	Monoclonal
Applications	WB, IHC, IF/ICC, FC	Conjugation	Unconjugated
Form / Buffer	Mouse IgG1. Liquid in PBS, pH 7.3, 30% glycerol, and 0.01% sodium azide.	Storage	at-20°C

BACKGROUND

Peripheral membrane component of the cis-Golgi stack that acts as a membrane skeleton that maintains the structure of the Golgi apparatus, and as a vesicle tether that facilitates vesicle fusion to the Golgi membrane (Probable) . Required for normal protein transport from the endoplasmic reticulum to the Golgi apparatus and the cell membrane . Together with p115/USO1 and STX5, involved in vesicle tethering and fusion at the cis-Golgi membrane to maintain the stacked and inter-connected structure of the Golgi apparatus. Plays a central role in mitotic Golgi disassembly: phosphorylation at Ser-37 by CDK1 at the onset of mitosis inhibits the interaction with p115/USO1, preventing tethering of COPI vesicles and thereby inhibiting transport through the Golgi apparatus during mitosis .

APPLICATION

To ensure optimal assay performance, AREX recommends conducting reagent titration tailored to each testing system for optimal detection results.

WB	1:500 - 1:1000
IHC	1:100 - 1:500
IF/ICC	1:50 - 1:100
FC	1:100 - 1:200

*Results are sample-specific. Please refer to your local assay conditions and test parameters for reference.

PRODUCT OVERVIEW

Description	Mouse monoclonal to GM130
Specificity	Recognizes endogenous levels of GM130 protein
Antibody Type	Primary antibody
Immunogen	Recombinant fusion protein of human GM130 expressed in HEK293
Purification	This antibody is purified through a protein G column.
Molecular Weight	Predicted: 113 kD; Observed: 130 kD kD
Form/Buffer	Mouse IgG1. Liquid in PBS, pH 7.3, 30% glycerol, and 0.01% sodium azide.
Alternative Names	Golgin subfamily A member 2; 130 kDa cis-Golgi matrix protein; GM130; GM130 autoantigen; Golgin-95
Gene Symbol	GOLGA2
Entrez Gene	2801(Human)
SwissProt	Q08379(Human)

*AREX continuously optimizes our products. Webpage content may not reflect the latest updates. For inquiries, please contact info@arexbio.com or your local distributor.

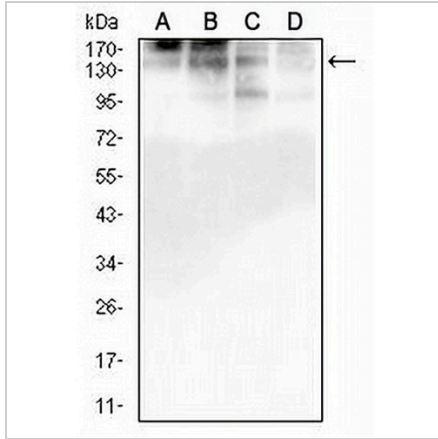
*Clone Number, Reactivity, Source/Host and Clonality can be found in the product name and Key Features section above.

DATASHEET

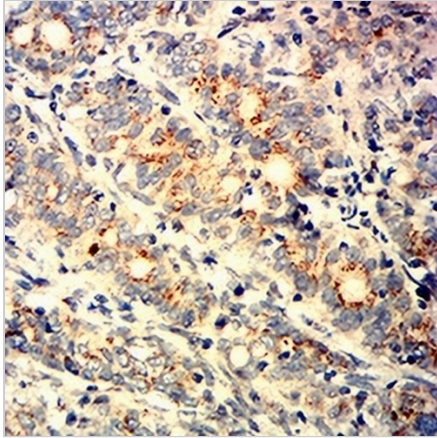
GM130 Mouse Monoclonal Antibody(C2717)

CAT. NO. AMA02329

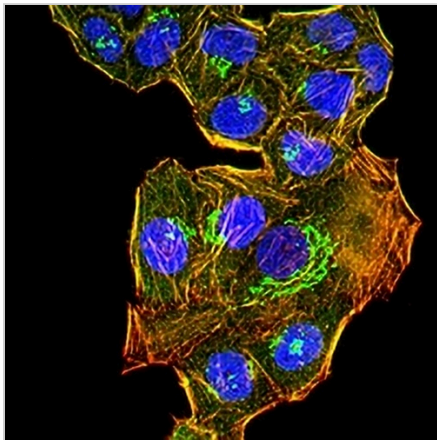
DATA



Western blot analysis of GM130 expression in HepG2 (A), HeLa (B), K562 (C), HEK293 (D) whole cell lysates. (Predicted band size: 113 kD; Observed band size: 130 kD)



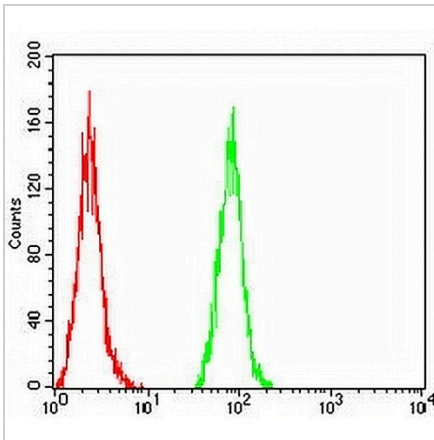
Immunohistochemical analysis of GM130 staining in human cervical cancer formalin fixed paraffin embedded tissue section. The section was pre-treated using heat mediated antigen retrieval with sodium citrate buffer (pH 6.0). The section was then incubated with the antibody at room temperature and detected using an HRP conjugated compact polymer system. DAB was used as the chromogen. The section was then counterstained with haematoxylin and mounted with DPX.



Immunofluorescent analysis of GM130 staining in HeLa cells. Formalin-fixed cells were permeabilized with 0.1% Triton X-100 in TBS for 5-10 minutes and blocked with 3% BSA-PBS for 30 minutes at room temperature. Cells were probed with the primary antibody in 3% BSA-PBS and incubated overnight at 4 °C in a humidified chamber. Cells were washed with PBST and incubated with an AREX® Fluor 488 -conjugated secondary antibody (green) in PBS at room temperature in the dark. Phalloidin - AREX® Fluor 594 was used to stain Actin filaments (red). DAPI was used to stain the cell nuclei (blue).

DATASHEET**GM130 Mouse Monoclonal Antibody(C2717)**

CAT. NO. AMA02329

DATA (CONTINUED)

Flow cytometric analysis of HeLa cells using Anti-GM130 Antibody (green) and negative control (red).

STORAGE

Store at 4°C short term. For long term storage, store at -20°C, avoiding freeze/thaw cycles.

NOTE

For Research Use Only. Not for diagnostic, therapeutics, prophylactic or in vivo use.