

DATASHEET

CD42b Mouse Monoclonal Antibody(C2718)

CAT. NO. AMA02330

KEY FEATURES

Target	CD42b	Source / Host	Mouse
Reactivity	Human	Clonality	Monoclonal
Applications	WB, FC	Conjugation	Unconjugated
Form / Buffer	Mouse IgG1. Liquid in PBS, pH 7.3, 30% glycerol, and 0.01% sodium azide.	Storage	at-20°C

BACKGROUND

GP-Ib, a surface membrane protein of platelets, participates in the formation of platelet plugs by binding to the A1 domain of vWF, which is already bound to the subendothelium.

APPLICATION

To ensure optimal assay performance, AREX recommends conducting reagent titration tailored to each testing system for optimal detection results.

WB	1:500 - 1:1000
FC	1:100 - 1:200

*Results are sample-specific. Please refer to your local assay conditions and test parameters for reference.

PRODUCT OVERVIEW

Description	Mouse monoclonal to CD42b
Specificity	Recognizes endogenous levels of CD42b protein
Antibody Type	Primary antibody
Immunogen	Recombinant fusion protein of human CD42b expressed in E. Coli
Purification	This antibody is purified through a protein G column.
Molecular Weight	Predicted: 72 kD; Observed: 70 kD kD
Form/Buffer	Mouse IgG1. Liquid in PBS, pH 7.3, 30% glycerol, and 0.01% sodium azide.
Alternative Names	Platelet glycoprotein Ib alpha chain; GP-Ib alpha; GPIb-alpha; GPIbA; Glycoprotein Ibalpha; Antigen CD42b-alpha; CD42b
Gene Symbol	GP1BA
Entrez Gene	2811(Human)
SwissProt	P07359(Human)

*AREX continuously optimizes our products. Webpage content may not reflect the latest updates. For inquiries, please contact info@arexbio.com or your local distributor.

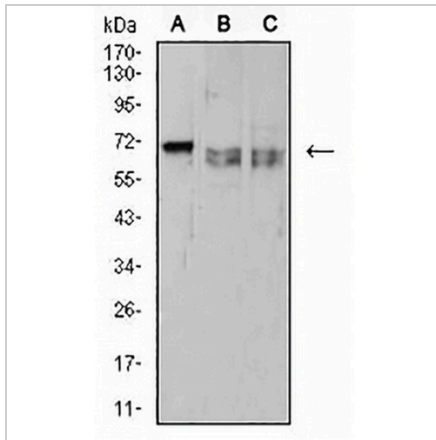
*Clone Number, Reactivity, Source/Host and Clonality can be found in the product name and Key Features section above.

DATASHEET

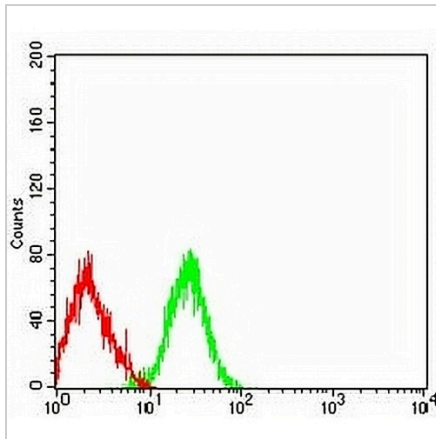
CD42b Mouse Monoclonal Antibody(C2718)

CAT. NO. AMA02330

DATA



Western blot analysis of CD42b expression in HL60 (A), MOLT4 (B), Ramos (C) whole cell lysates. (Predicted band size: 72 kD; Observed band size: 70 kD)



Flow cytometric analysis of HL60 cells using Anti-CD42b Antibody (green) and negative control (red).

STORAGE

Store at 4°C short term. For long term storage, store at -20°C, avoiding freeze/thaw cycles.

NOTE

For Research Use Only. Not for diagnostic, therapeutics, prophylactic or in vivo use.