

DATASHEET

Glypican 3 Mouse Monoclonal Antibody(C2720)

CAT. NO. AMA02332

KEY FEATURES

Target	Glypican 3	Source / Host	Mouse
Reactivity	Human, Mouse, Rat	Clonality	Monoclonal
Applications	WB, IHC, IF/ICC, FC	Conjugation	Unconjugated
Form / Buffer	Mouse IgG1. Liquid in PBS, pH 7.3, 30% glycerol, and 0.01% sodium azide.	Storage	at-20°C

BACKGROUND

Cell surface proteoglycan . Negatively regulates the hedgehog signaling pathway when attached via the GPI-anchor to the cell surface by competing with the hedgehog receptor PTC1 for binding to hedgehog proteins . Binding to the hedgehog protein SHH triggers internalization of the complex by endocytosis and its subsequent lysosomal degradation . Positively regulates the canonical Wnt signaling pathway by binding to the Wnt receptor Frizzled and stimulating the binding of the Frizzled receptor to Wnt ligands . Positively regulates the non-canonical Wnt signaling pathway . Binds to CD81 which decreases the availability of free CD81 for binding to the transcriptional repressor HHEX, resulting in nuclear translocation of HHEX and transcriptional repression .

APPLICATION

To ensure optimal assay performance, AREX recommends conducting reagent titration tailored to each testing system for optimal detection results.

WB	1:500 - 1:1000
IHC	1:100 - 1:500
IF/ICC	1:100 - 1:500
FC	1:100 - 1:200

*Results are sample-specific. Please refer to your local assay conditions and test parameters for reference.

PRODUCT OVERVIEW

Description	Mouse monoclonal to Glypican 3
Specificity	Recognizes endogenous levels of Glypican 3 protein
Antibody Type	Primary antibody
Immunogen	Recombinant fusion protein of human Glypican 3 expressed in E. Coli
Purification	This antibody is purified through a protein G column.
Molecular Weight	Predicted: 66 kD; Observed: 66 kD
Form/Buffer	Mouse IgG1. Liquid in PBS, pH 7.3, 30% glycerol, and 0.01% sodium azide.
Alternative Names	OCI5; GlypIC,an-3; GTR2-2; Intestinal protein OCI-5; MXR7
Gene Symbol	GPC3
Entrez Gene	2719(Human); 14734(Mouse); 25236(Rat)
SwissProt	P51654(Human); Q8CFZ4(Mouse); P13265(Rat)

*AREX continuously optimizes our products. Webpage content may not reflect the latest updates. For inquiries, please contact info@arexbio.com or your local distributor.

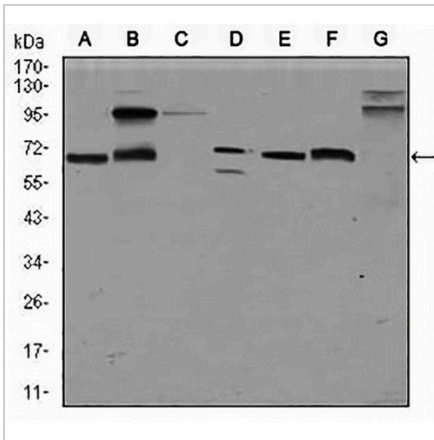
*Clone Number, Reactivity, Source/Host and Clonality can be found in the product name and Key Features section above.

DATASHEET

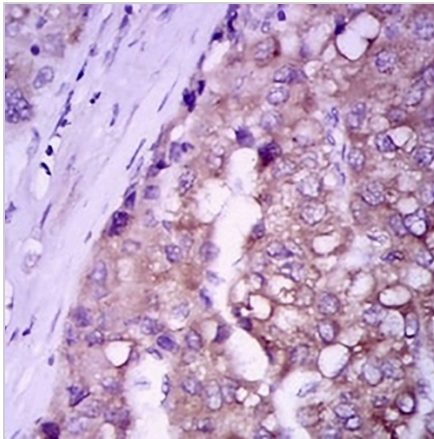
Glypican 3 Mouse Monoclonal Antibody(C2720)

CAT. NO. AMA02332

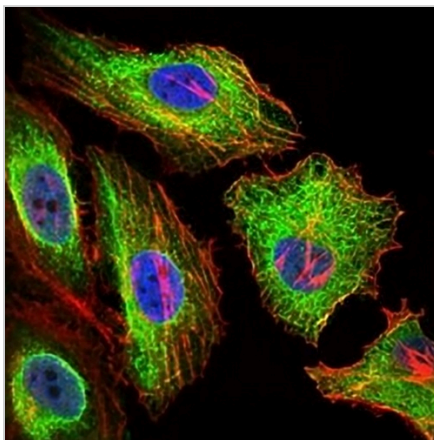
DATA



Western blot analysis of Glypican 3 expression in HepG2 (A), HEK293 (B), Jurkat (C), SKNSH (D), PC12 (E), F9 (F), mouse liver (G) whole cell lysates. (Predicted band size: 66 kD; Observed band size: 66 kD kD)



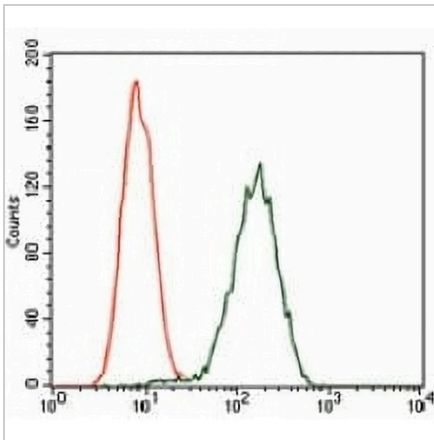
Immunohistochemical analysis of Glypican 3 staining in human liver cancer formalin fixed paraffin embedded tissue section. The section was pre-treated using heat mediated antigen retrieval with sodium citrate buffer (pH 6.0). The section was then incubated with the antibody at room temperature and detected using an HRP conjugated compact polymer system. DAB was used as the chromogen. The section was then counterstained with haematoxylin and mounted with DPX.



Immunofluorescent analysis of Glypican 3 staining in HeLa cells. Formalin-fixed cells were permeabilized with 0.1% Triton X-100 in TBS for 5-10 minutes and blocked with 3% BSA-PBS for 30 minutes at room temperature. Cells were probed with the primary antibody in 3% BSA-PBS and incubated overnight at 4 °C in a humidified chamber. Cells were washed with PBST and incubated with an AREX® Fluor 488 -conjugated secondary antibody (green) in PBS at room temperature in the dark. Phalloidin - AREX® Fluor 594 was used to stain Actin filaments (red). DAPI was used to stain the cell nuclei (blue).

DATASHEET**Glypican 3 Mouse Monoclonal Antibody(C2720)**

CAT. NO. AMA02332

DATA (CONTINUED)

Flow cytometric analysis of Jurkat cells using Anti-Glypican 3 Antibody (green) and negative control (red).

STORAGE

Store at 4°C short term. For long term storage, store at -20°C, avoiding freeze/thaw cycles.

NOTE

For Research Use Only. Not for diagnostic, therapeutics, prophylactic or in vivo use.