

DATASHEET

GSTP1 Mouse Monoclonal Antibody(C2727)

CAT. NO. AMA02339

KEY FEATURES

Target	GSTP1	Source / Host	Mouse
Reactivity	Human	Clonality	Monoclonal
Applications	WB, IHC, IF/ICC, FC	Conjugation	Unconjugated
Form / Buffer	Mouse IgG1. Liquid in PBS, pH 7.3, 30% glycerol, and 0.01% sodium azide.	Storage	at-20°C

BACKGROUND

Catalyzes conjugation of reduced glutathione to a wide number of exogenous and endogenous hydrophobic electrophiles . Involved in the formation of glutathione conjugates of both prostaglandin A2 (PGA2) and prostaglandin J2 (PGJ2) . Participates in the formation of novel hepxilin regioisomers . Acts as a negative regulator of ferroptosis by mediating glutathione conjugation and detoxification of 4-hydroxynonenal (4-HNE) reactive aldehyde . Negatively regulates CDK5 activity via p25/p35 translocation to prevent neurodegeneration .

APPLICATION

To ensure optimal assay performance, AREX recommends conducting reagent titration tailored to each testing system for optimal detection results.

WB	1:500 - 1:1000
IHC	1:100 - 1:500
IF/ICC	1:100 - 1:500
FC	1:100 - 1:200

*Results are sample-specific. Please refer to your local assay conditions and test parameters for reference.

PRODUCT OVERVIEW

Description	Mouse monoclonal to GSTP1
Specificity	Recognizes endogenous levels of GSTP1 protein
Antibody Type	Primary antibody
Immunogen	Recombinant fusion protein of human GSTP1 expressed in E. Coli
Purification	This antibody is purified through a protein G column.
Molecular Weight	Predicted: 23 kD; Observed: 23 kD
Form/Buffer	Mouse IgG1. Liquid in PBS, pH 7.3, 30% glycerol, and 0.01% sodium azide.
Alternative Names	FAEES3; GST3; Glutathione S-transferase P; GST class-pi; GSTP1-1
Gene Symbol	GSTP1
Entrez Gene	2950(Human)
SwissProt	P09211(Human)

*AREX continuously optimizes our products. Webpage content may not reflect the latest updates. For inquiries, please contact info@arexbio.com or your local distributor.

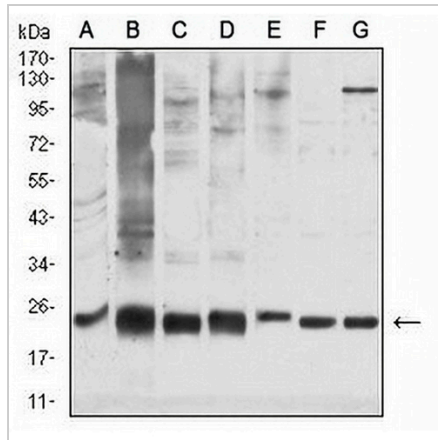
*Clone Number, Reactivity, Source/Host and Clonality can be found in the product name and Key Features section above.

DATASHEET

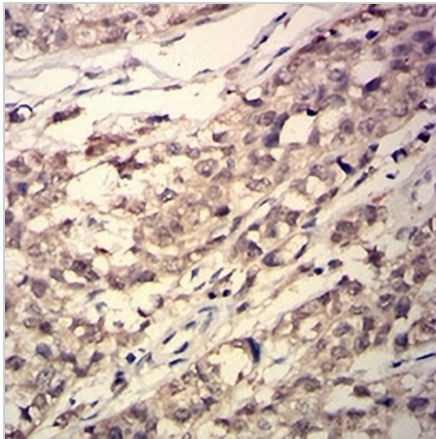
GSTP1 Mouse Monoclonal Antibody(C2727)

CAT. NO. AMA02339

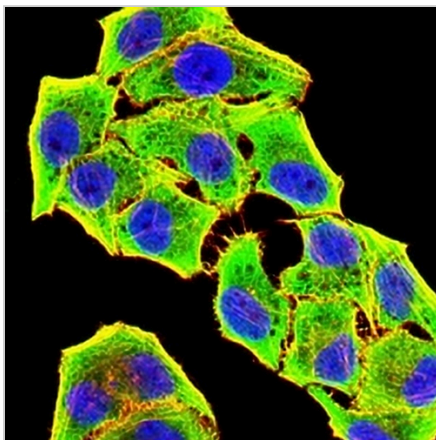
DATA



Western blot analysis of GSTP1 expression in PC3 (A), K562 (B), HeLa (C), Jurkat (D), MOLT4 (E), HCT116 (F), A431 (G) whole cell lysates. (Predicted band size: 23 kD; Observed band size: 23 kD)



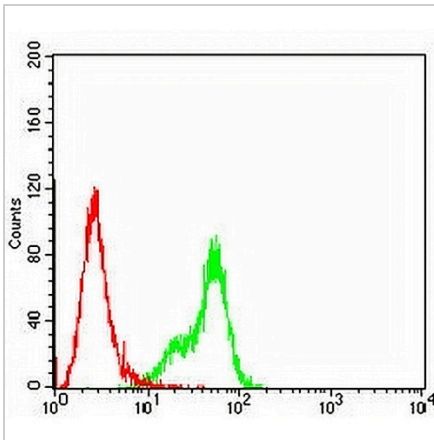
Immunohistochemical analysis of GSTP1 staining in human cervical cancer formalin fixed paraffin embedded tissue section. The section was pre-treated using heat mediated antigen retrieval with sodium citrate buffer (pH 6.0). The section was then incubated with the antibody at room temperature and detected using an HRP conjugated compact polymer system. DAB was used as the chromogen. The section was then counterstained with haematoxylin and mounted with DPX.



Immunofluorescent analysis of GSTP1 staining in HeLa cells. Formalin-fixed cells were permeabilized with 0.1% Triton X-100 in TBS for 5-10 minutes and blocked with 3% BSA-PBS for 30 minutes at room temperature. Cells were probed with the primary antibody in 3% BSA-PBS and incubated overnight at 4 °C in a humidified chamber. Cells were washed with PBST and incubated with an AREX® Fluor 488 -conjugated secondary antibody (green) in PBS at room temperature in the dark. Phalloidin - AREX® Fluor 594 was used to stain Actin filaments (red). DAPI was used to stain the cell nuclei (blue).

DATASHEET**GSTP1 Mouse Monoclonal Antibody(C2727)**

CAT. NO. AMA02339

DATA (CONTINUED)

Flow cytometric analysis of HeLa cells using Anti-GSTP1 Antibody (green) and negative control (red).

STORAGE

Store at 4°C short term. For long term storage, store at -20°C, avoiding freeze/thaw cycles.

NOTE

For Research Use Only. Not for diagnostic, therapeutics, prophylactic or in vivo use.