

DATASHEET

HAS1 Mouse Monoclonal Antibody(C2730)

CAT. NO. AMA02342

KEY FEATURES

Target	HAS1	Source / Host	Mouse
Reactivity	Human, Rat	Clonality	Monoclonal
Applications	WB, IHC, IF/ICC, FC	Conjugation	Unconjugated
Form / Buffer	Mouse IgG2b. Liquid in PBS, pH 7.3, 30% glycerol, and 0.01% sodium azide.	Storage	at-20°C

BACKGROUND

Catalyzes the addition of GlcNAc or GlcUA monosaccharides to the nascent hyaluronan polymer. Therefore, it is essential for the synthesis of hyaluronan, a major component of most extracellular matrices that has a structural role in tissue architecture and regulates cell adhesion, migration and differentiation. This is one of the isozymes catalyzing that reaction. Also able to catalyze the synthesis of chito-oligosaccharide depending on the substrate .

APPLICATION

To ensure optimal assay performance, AREX recommends conducting reagent titration tailored to each testing system for optimal detection results.

WB	1:500 - 1:1000
IHC	1:100 - 1:500
IF/ICC	1:100 - 1:500
FC	1:100 - 1:200

*Results are sample-specific. Please refer to your local assay conditions and test parameters for reference.

PRODUCT OVERVIEW

Description	Mouse monoclonal to HAS1
Specificity	Recognizes endogenous levels of HAS1 protein
Antibody Type	Primary antibody
Immunogen	Recombinant fusion protein of human HAS1 expressed in E. Coli
Purification	This antibody is purified through a protein G column.
Molecular Weight	Predicted: 65 kD; Observed: 50 kD kD
Form/Buffer	Mouse IgG2b. Liquid in PBS, pH 7.3, 30% glycerol, and 0.01% sodium azide.
Alternative Names	HAS; Hyaluronan synthase 1; Hyaluronate synthase 1; HyaluronIC, acid synthase 1; HA synthase 1; HuHAS1
Gene Symbol	HAS1
Entrez Gene	3036(Human)
SwissProt	Q92839(Human)

*AREX continuously optimizes our products. Webpage content may not reflect the latest updates. For inquiries, please contact info@arexbio.com or your local distributor.

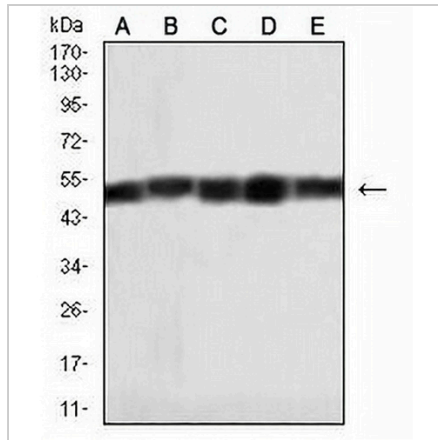
*Clone Number, Reactivity, Source/Host and Clonality can be found in the product name and Key Features section above.

DATASHEET

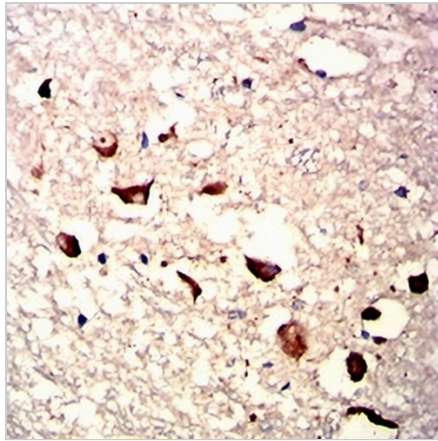
HAS1 Mouse Monoclonal Antibody(C2730)

CAT. NO. AMA02342

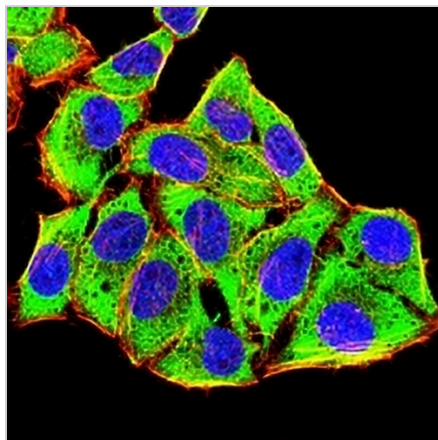
DATA



Western blot analysis of HAS1 expression in SKBR3 (A), SKOV3 (B), CHO (C), SW480 (D), Hela (E) whole cell lysates. (Predicted band size: 65 kD; Observed band size: 50 kD)



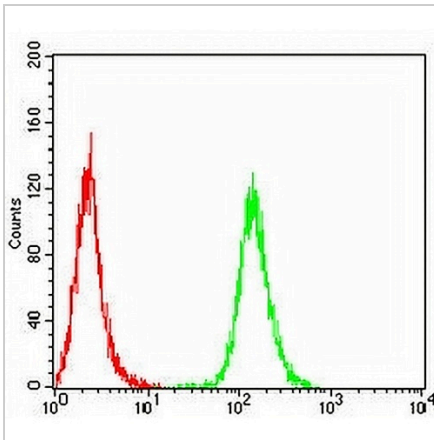
Immunohistochemical analysis of HAS1 staining in human brain formalin fixed paraffin embedded tissue section. The section was pre-treated using heat mediated antigen retrieval with sodium citrate buffer (pH 6.0). The section was then incubated with the antibody at room temperature and detected using an HRP conjugated compact polymer system. DAB was used as the chromogen. The section was then counterstained with haematoxylin and mounted with DPX.



Immunofluorescent analysis of HAS1 staining in Hela cells. Formalin-fixed cells were permeabilized with 0.1% Triton X-100 in TBS for 5-10 minutes and blocked with 3% BSA-PBS for 30 minutes at room temperature. Cells were probed with the primary antibody in 3% BSA-PBS and incubated overnight at 4 °C in a humidified chamber. Cells were washed with PBST and incubated with an AREX® Fluor 488 -conjugated secondary antibody (green) in PBS at room temperature in the dark. Phalloidin - AREX® Fluor 594 was used to stain Actin filaments (red). DAPI was used to stain the cell nuclei (blue).

DATASHEET**HAS1 Mouse Monoclonal Antibody(C2730)**

CAT. NO. AMA02342

DATA (CONTINUED)

Flow cytometric analysis of HeLa cells using Anti-HAS1 Antibody (green) and negative control (red).

STORAGE

Store at 4°C short term. For long term storage, store at -20°C, avoiding freeze/thaw cycles.

NOTE

For Research Use Only. Not for diagnostic, therapeutics, prophylactic or in vivo use.