

## DATASHEET

# KIM1 Mouse Monoclonal Antibody(C2732)

CAT. NO. AMA02344

### KEY FEATURES

Target	KIM1	Source / Host	Mouse
Reactivity	Human, Mouse	Clonality	Monoclonal
Applications	WB	Conjugation	Unconjugated
Form / Buffer	Mouse IgG1. Liquid in PBS, pH 7.3, 30% glycerol, and 0.01% sodium azide.	Storage	at-20°C

### BACKGROUND

Phosphatidylserine receptor that plays an important functional role in regulatory B-cell homeostasis including generation, expansion and suppressor functions . As P-selectin/SELPLG ligand, plays a specialized role in activated but not naive T-cell trafficking during inflammatory responses . Controls thereby T-cell accumulation in the inflamed central nervous system (CNS) and the induction of autoimmune disease . Also regulates expression of various anti-inflammatory cytokines and co-inhibitory ligands including IL10 . Acts as a regulator of T-cell proliferation . Confers phagocytic ability on injured kidney epithelial cells, allowing them to bind to and internalize apoptotic bodies and necrotic debris following kidney injury .

### APPLICATION

To ensure optimal assay performance, AREX recommends conducting reagent titration tailored to each testing system for optimal detection results.

WB	1:500 - 1:1000
----	----------------

\*Results are sample-specific. Please refer to your local assay conditions and test parameters for reference.

### PRODUCT OVERVIEW

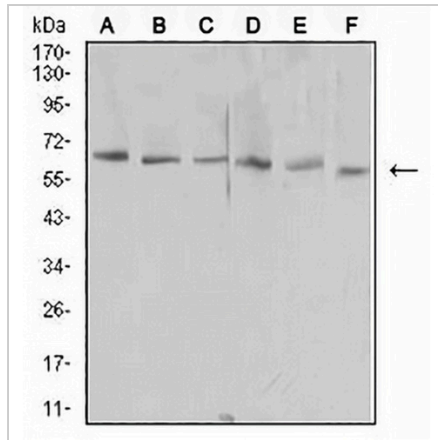
Description	Mouse monoclonal to KIM1
Specificity	Recognizes endogenous levels of KIM1 protein
Antibody Type	Primary antibody
Immunogen	Recombinant fusion protein of human KIM1 expressed in E. Coli
Purification	This antibody is purified through a protein G column.
Molecular Weight	Predicted: 39 kD; Observed: 63 kD kD
Form/Buffer	Mouse IgG1. Liquid in PBS, pH 7.3, 30% glycerol, and 0.01% sodium azide.
Alternative Names	KIM1; TIM1; TIMD1; Hepatitis A virus cellular receptor 1; HAVcr-1; Kidney injury molecule 1; KIM-1; T-cell immunoglobulin and mucin domain-containing protein 1; TIMD-1; T-cell immunoglobulin mucin receptor 1; TIM; TIM-1; T-cell membrane protein 1
Gene Symbol	HAVCR1
Entrez Gene	26762(Human); 286934(Rat)
SwissProt	Q96D42(Human); Q5QNS5(Mouse)

\*AREX continuously optimizes our products. Webpage content may not reflect the latest updates. For inquiries, please contact [info@arexbio.com](mailto:info@arexbio.com) or your local distributor.

\*Clone Number, Reactivity, Source/Host and Clonality can be found in the product name and Key Features section above.

**DATASHEET****KIM1 Mouse Monoclonal Antibody(C2732)**

CAT. NO. AMA02344

**DATA**

Western blot analysis of KIM1 expression in NIH/3T3 (A), HEK293 (B), HeLa (C), Raw264.7 (D), Jurkat (E), PC2 (F) whole cell lysates. (Predicted band size: 39 kD; Observed band size: 63 kD)

**STORAGE**

Store at 4°C short term. For long term storage, store at -20°C, avoiding freeze/thaw cycles.

**NOTE**

For Research Use Only. Not for diagnostic, therapeutics, prophylactic or in vivo use.