

**DATASHEET**

**HEXA Mouse Monoclonal Antibody(C2736)**

CAT. NO. AMA02348

**KEY FEATURES**

Target	HEXA	Source / Host	Mouse
Reactivity	Human	Clonality	Monoclonal
Applications	WB, FC	Conjugation	Unconjugated
Form / Buffer	Mouse IgG2b. Liquid in PBS, pH 7.3, 30% glycerol, and 0.01% sodium azide.	Storage	at-20°C

**BACKGROUND**

Hydrolyzes the non-reducing end N-acetyl-D-hexosamine and/or sulfated N-acetyl-D-hexosamine of glycoconjugates, such as the oligosaccharide moieties from proteins and neutral glycolipids, or from certain mucopolysaccharides . The isozyme S is as active as the isozyme A on the anionic bis-sulfated glycans, the chondroitin-6-sulfate trisaccharide (C6S-3), and the dermatan sulfate pentasaccharide, and the sulfated glycosphingolipid SM2 . The isozyme B does not hydrolyze each of these substrates, however hydrolyzes efficiently neutral oligosaccharide . Only the isozyme A is responsible for the degradation of GM2 gangliosides in the presence of GM2A .

**APPLICATION**

To ensure optimal assay performance, AREX recommends conducting reagent titration tailored to each testing system for optimal detection results.

WB	1:500 - 1:1000
FC	1:100 - 1:200

\*Results are sample-specific. Please refer to your local assay conditions and test parameters for reference.

**PRODUCT OVERVIEW**

Description	Mouse monoclonal to HEXA
Specificity	Recognizes endogenous levels of HEXA protein
Antibody Type	Primary antibody
Immunogen	Recombinant fusion protein of human HEXA expressed in E. Coli
Purification	This antibody is purified through a protein G column.
Molecular Weight	Predicted: 61 kD; Observed: 61 kD
Form/Buffer	Mouse IgG2b. Liquid in PBS, pH 7.3, 30% glycerol, and 0.01% sodium azide.
Alternative Names	Beta-hexosaminidase subunit alpha; Beta-N-acetylhexosaminidase subunit alpha; Hexosaminidase subunit A; N-acetyl-beta-glucosaminidase subunit alpha
Gene Symbol	HEXA
Entrez Gene	3073(Human)
SwissProt	P06865(Human)

\*AREX continuously optimizes our products. Webpage content may not reflect the latest updates. For inquiries, please contact [info@arexbio.com](mailto:info@arexbio.com) or your local distributor.

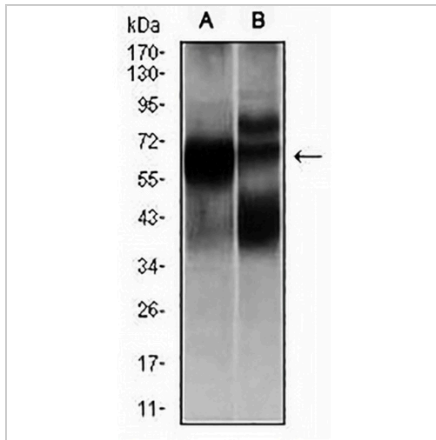
\*Clone Number, Reactivity, Source/Host and Clonality can be found in the product name and Key Features section above.

**DATASHEET**

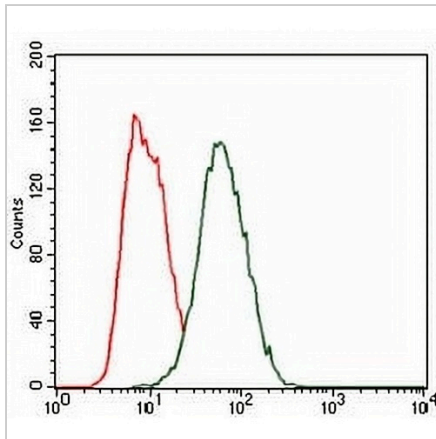
**HEXA Mouse Monoclonal Antibody(C2736)**

CAT. NO. AMA02348

**DATA**



Western blot analysis of HEXA expression in L1210 (A), HL7702 (B) whole cell lysates.  
(Predicted band size: 61 kD; Observed band size: 61 kD)



Flow cytometric analysis of HeLa cells using Anti-HEXA Antibody (green) and negative control (red).

**STORAGE**

Store at 4°C short term. For long term storage, store at -20°C, avoiding freeze/thaw cycles.

**NOTE**

For Research Use Only. Not for diagnostic, therapeutics, prophylactic or in vivo use.