

DATASHEET

Histone H4 (MonoMethyl-K20) Mouse Monoclonal Antibody(C2737)

CAT. NO. AMA02349

KEY FEATURES

Target	Histone H4 (MonoMethyl-K20)	Source / Host	Mouse
Reactivity	Human	Clonality	Monoclonal
Applications	WB, IHC, IF/ICC, FC	Conjugation	Unconjugated
Form / Buffer	Mouse IgG1. Liquid in PBS, pH 7.3, 30% glycerol, and 0.01% sodium azide.	Storage	at-20°C

BACKGROUND

Core component of nucleosome. Nucleosomes wrap and compact DNA into chromatin, limiting DNA accessibility to the cellular machineries which require DNA as a template. Histones thereby play a central role in transcription regulation, DNA repair, DNA replication and chromosomal stability. DNA accessibility is regulated via a complex set of post-translational modifications of histones, also called histone code, and nucleosome remodeling.

APPLICATION

To ensure optimal assay performance, AREX recommends conducting reagent titration tailored to each testing system for optimal detection results.

WB	1:500 - 1:1000
IHC	1:100 - 1:500
IF/ICC	1:100 - 1:500
FC	1:100 - 1:200

*Results are sample-specific. Please refer to your local assay conditions and test parameters for reference.

PRODUCT OVERVIEW

Description	Mouse monoclonal to Histone H4 (MonoMethyl-K20)
Specificity	Recognizes endogenous levels of Histone H4 (MonoMethyl-K20) protein
Antibody Type	Primary antibody
Immunogen	Synthesized peptide of human Histone H4 (MonoMethyl-K20)
Purification	This antibody is purified through a protein G column.
Molecular Weight	Predicted: 11 kD; Observed: 14 kD kD
Form/Buffer	Mouse IgG1. Liquid in PBS, pH 7.3, 30% glycerol, and 0.01% sodium azide.
Alternative Names	H4/A; Histone H4
Gene Symbol	HIST1H4A
Entrez Gene	8370(Human)
SwissProt	P62805(Human)

*AREX continuously optimizes our products. Webpage content may not reflect the latest updates. For inquiries, please contact info@arexbio.com or your local distributor.

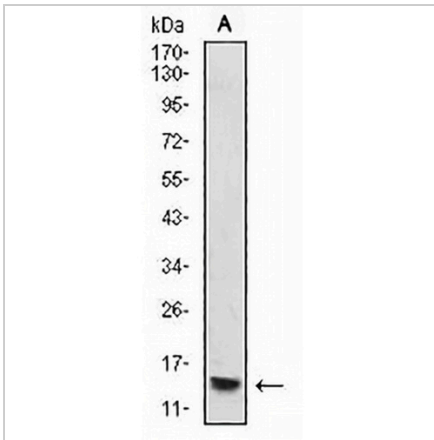
*Clone Number, Reactivity, Source/Host and Clonality can be found in the product name and Key Features section above.

DATASHEET

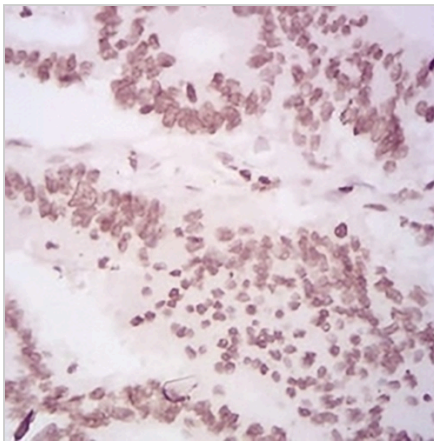
Histone H4 (MonoMethyl-K20) Mouse Monoclonal Antibody(C2737)

CAT. NO. AMA02349

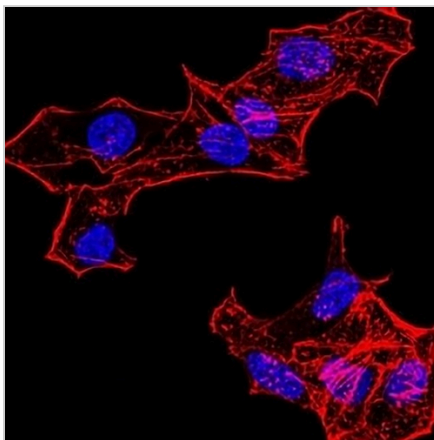
DATA



Western blot analysis of Histone H4 (MonoMethyl-K20) expression in THP1 (A) whole cell lysates. (Predicted band size: 11 kD; Observed band size: 14 kD)



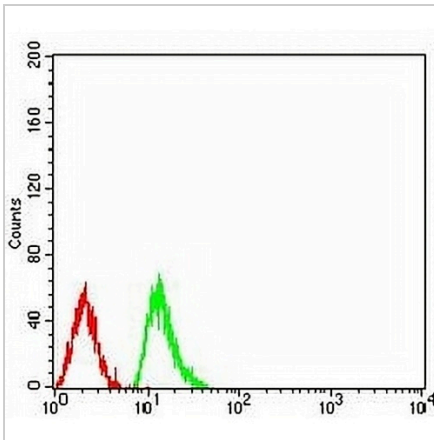
Immunohistochemical analysis of Histone H4 (MonoMethyl-K20) staining in human rectum cancer formalin fixed paraffin embedded tissue section. The section was pre-treated using heat mediated antigen retrieval with sodium citrate buffer (pH 6.0). The section was then incubated with the antibody at room temperature and detected using an HRP conjugated compact polymer system. DAB was used as the chromogen. The section was then counterstained with haematoxylin and mounted with DPX.



Immunofluorescent analysis of Histone H4 (MonoMethyl-K20) staining in HeLa cells. Formalin-fixed cells were permeabilized with 0.1% Triton X-100 in TBS for 5-10 minutes and blocked with 3% BSA-PBS for 30 minutes at room temperature. Cells were probed with the primary antibody in 3% BSA-PBS and incubated overnight at 4 °C in a humidified chamber. Cells were washed with PBST and incubated with an AREX® Fluor 488 - conjugated secondary antibody (green) in PBS at room temperature in the dark. Phalloidin - AREX® Fluor 594 was used to stain Actin filaments (red). DAPI was used to stain the cell nuclei (blue).

DATASHEET**Histone H4 (MonoMethyl-K20) Mouse Monoclonal Antibody(C2737)**

CAT. NO. AMA02349

DATA (CONTINUED)

Flow cytometric analysis of Raji cells using Anti-Histone H4 (MonoMethyl-K20) Antibody (green) and negative control (red).

STORAGE

Store at 4°C short term. For long term storage, store at -20°C, avoiding freeze/thaw cycles.

NOTE

For Research Use Only. Not for diagnostic, therapeutics, prophylactic or in vivo use.