

DATASHEET

HLA-C Mouse Monoclonal Antibody(C2742)

CAT. NO. AMA02354

KEY FEATURES

Target	HLA-C	Source / Host	Mouse
Reactivity	Human, Mouse	Clonality	Monoclonal
Applications	WB, IHC	Conjugation	Unconjugated
Form / Buffer	Mouse IgG1. Liquid in PBS, pH 7.3, 30% glycerol, and 0.01% sodium azide.	Storage	at-20°C

BACKGROUND

Antigen-presenting major histocompatibility complex class I (MHCI) molecule with an important role in reproduction and antiviral immunity molecule with an important role in reproduction and antiviral immunity . In complex with B2M/beta 2 microglobulin displays a restricted repertoire of self and viral peptides and acts as a dominant ligand for inhibitory and activating killer immunoglobulin receptors (KIRs) expressed on NK cells . In an allogeneic setting, such as during pregnancy, mediates interaction of extravillous trophoblasts with KIR on uterine NK cells and regulate trophoblast invasion necessary for placentation and overall fetal growth .

APPLICATION

To ensure optimal assay performance, AREX recommends conducting reagent titration tailored to each testing system for optimal detection results.

WB	1:500 - 1:1000
IHC	1:100 - 1:500

*Results are sample-specific. Please refer to your local assay conditions and test parameters for reference.

PRODUCT OVERVIEW

Description	Mouse monoclonal to HLA-C
Specificity	Recognizes endogenous levels of HLA-C protein
Antibody Type	Primary antibody
Immunogen	Recombinant fusion protein of human HLA-C expressed in E. Coli
Purification	This antibody is purified through a protein G column.
Molecular Weight	Predicted: 41 kD; Observed: 46 kD
Form/Buffer	Mouse IgG1. Liquid in PBS, pH 7.3, 30% glycerol, and 0.01% sodium azide.
Alternative Names	HLAC; HLA class I histocompatibility antigen, Cw-7 alpha chain; MHC class I antigen Cw*7
Gene Symbol	HLA-C
Entrez Gene	3107(Human)
SwissProt	P10321(Human)

*AREX continuously optimizes our products. Webpage content may not reflect the latest updates. For inquiries, please contact info@arexbio.com or your local distributor.

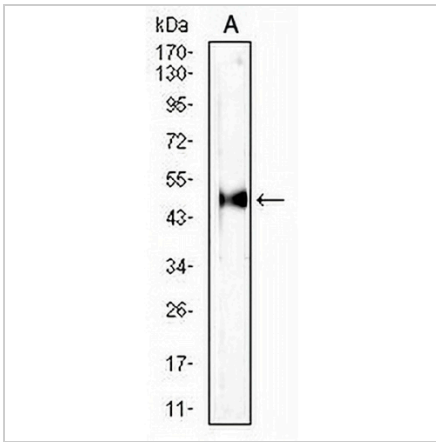
*Clone Number, Reactivity, Source/Host and Clonality can be found in the product name and Key Features section above.

DATASHEET

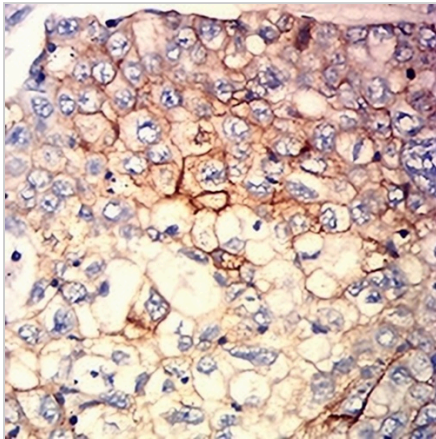
HLA-C Mouse Monoclonal Antibody(C2742)

CAT. NO. AMA02354

DATA



Western blot analysis of HLA-C expression in mouse liver (A) whole cell lysates. (Predicted band size: 41 kD; Observed band size: 46 kD)



Immunohistochemical analysis of HLA-C staining in human lung cancer formalin fixed paraffin embedded tissue section. The section was pre-treated using heat mediated antigen retrieval with sodium citrate buffer (pH 6.0). The section was then incubated with the antibody at room temperature and detected using an HRP conjugated compact polymer system. DAB was used as the chromogen. The section was then counterstained with haematoxylin and mounted with DPX.

STORAGE

Store at 4°C short term. For long term storage, store at -20°C, avoiding freeze/thaw cycles.

NOTE

For Research Use Only. Not for diagnostic, therapeutics, prophylactic or in vivo use.