

**DATASHEET**
**HLA-DPA1 Mouse Monoclonal Antibody(C2743)**
**CAT. NO. AMA02355**
**KEY FEATURES**

Target	HLA-DPA1	Source / Host	Mouse
Reactivity	Human	Clonality	Monoclonal
Applications	WB, IHC, FC	Conjugation	Unconjugated
Form / Buffer	Mouse IgG2a. Liquid in PBS, pH 7.3, 30% glycerol, and 0.01% sodium azide.	Storage	at-20°C

**BACKGROUND**

Binds peptides derived from antigens that access the endocytic route of antigen presenting cells (APC) and presents them on the cell surface for recognition by the CD4 T-cells. The peptide binding cleft accommodates peptides of 10-30 residues. The peptides presented by MHC class II molecules are generated mostly by degradation of proteins that access the endocytic route, where they are processed by lysosomal proteases and other hydrolases. Exogenous antigens that have been endocytosed by the APC are thus readily available for presentation via MHC II molecules, and for this reason this antigen presentation pathway is usually referred to as exogenous.

**APPLICATION**

To ensure optimal assay performance, AREX recommends conducting reagent titration tailored to each testing system for optimal detection results.

WB	1:500 - 1:1000
IHC	1:100 - 1:500
FC	1:100 - 1:200

\*Results are sample-specific. Please refer to your local assay conditions and test parameters for reference.

**PRODUCT OVERVIEW**

Description	Mouse monoclonal to HLA-DPA1
Specificity	Recognizes endogenous levels of HLA-DPA1 protein
Antibody Type	Primary antibody
Immunogen	Recombinant fusion protein of human HLA-DPA1 expressed in E. Coli
Purification	This antibody is purified through a protein G column.
Molecular Weight	Predicted: 29 kD; Observed: 33 kD
Form/Buffer	Mouse IgG2a. Liquid in PBS, pH 7.3, 30% glycerol, and 0.01% sodium azide.
Alternative Names	HLA-DP1A; HLAB5; HLA class II histocompatibility antigen, DP alpha 1 chain; DP(W3); DP(W4); HLA-SB alpha chain; MHC class II DP3-alpha; MHC class II DPA1
Gene Symbol	HLA-DPA1
Entrez Gene	3113(Human)
SwissProt	P20036(Human)

\*AREX continuously optimizes our products. Webpage content may not reflect the latest updates. For inquiries, please contact [info@arexbio.com](mailto:info@arexbio.com) or your local distributor.

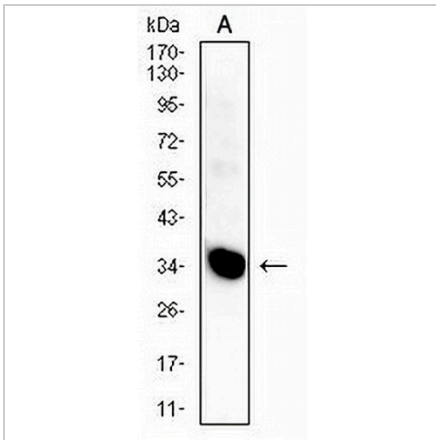
\*Clone Number, Reactivity, Source/Host and Clonality can be found in the product name and Key Features section above.

**DATASHEET**

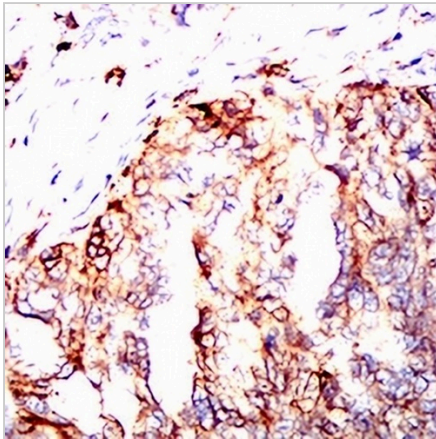
**HLA-DPA1 Mouse Monoclonal Antibody(C2743)**

CAT. NO. AMA02355

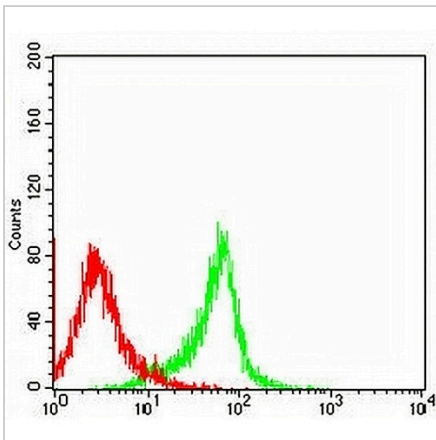
**DATA**



Western blot analysis of HLA-DPA1 expression in Raji (A) whole cell lysates. (Predicted band size: 29 kD; Observed band size: 33 kD)



Immunohistochemical analysis of HLA-DPA1 staining in human ovarian cancer formalin fixed paraffin embedded tissue section. The section was pre-treated using heat mediated antigen retrieval with sodium citrate buffer (pH 6.0). The section was then incubated with the antibody at room temperature and detected using an HRP conjugated compact polymer system. DAB was used as the chromogen. The section was then counterstained with haematoxylin and mounted with DPX.



Flow cytometric analysis of Jurkat cells using Anti-HLA-DPA1 Antibody (green) and negative control (red).

**STORAGE**

Store at 4°C short term. For long term storage, store at -20°C, avoiding freeze/thaw cycles.

**NOTE**

For Research Use Only. Not for diagnostic, therapeutics, prophylactic or in vivo use.