

DATASHEET

HLA-DRB1 Mouse Monoclonal Antibody(C2745)

CAT. NO. AMA02357

KEY FEATURES

Target	HLA-DRB1	Source / Host	Mouse
Reactivity	Human	Clonality	Monoclonal
Applications	WB, IHC, FC	Conjugation	Unconjugated
Form / Buffer	Mouse IgG1. Liquid in PBS, pH 7.3, 30% glycerol, and 0.01% sodium azide.	Storage	at-20°C

BACKGROUND

A beta chain of antigen-presenting major histocompatibility complex class II (MHCII) molecule. In complex with the alpha chain HLA-DRA, displays antigenic peptides on professional antigen presenting cells (APCs) for recognition by alpha-beta T cell receptor (TCR) on HLA-DRB1-restricted CD4-positive T cells. This guides antigen-specific T-helper effector functions, both antibody-mediated immune response and macrophage activation, to ultimately eliminate the infectious agents and transformed cells molecule. In complex with the alpha chain HLA-DRA, displays antigenic peptides on professional antigen presenting cells (APCs) for recognition by alpha-beta T cell receptor (TCR) on HLA-DRB1-restricted CD4-positive T cells.

APPLICATION

To ensure optimal assay performance, AREX recommends conducting reagent titration tailored to each testing system for optimal detection results.

WB	1:500 - 1:1000
IHC	1:100 - 1:500
FC	1:100 - 1:200

*Results are sample-specific. Please refer to your local assay conditions and test parameters for reference.

PRODUCT OVERVIEW

Description	Mouse monoclonal to HLA-DRB1
Specificity	Recognizes endogenous levels of HLA-DRB1 protein
Antibody Type	Primary antibody
Immunogen	Recombinant fusion protein of human HLA-DRB1 expressed in E. Coli
Purification	This antibody is purified through a protein G column.
Molecular Weight	Predicted: 30 kD; Observed: 30 kD
Form/Buffer	Mouse IgG1. Liquid in PBS, pH 7.3, 30% glycerol, and 0.01% sodium azide.
Alternative Names	HLA class II histocompatibility antigen, DRB1-3 chain; Clone P2-beta-3; MHC class II antigen DRB1*3
Gene Symbol	HLA-DRB1
Entrez Gene	3123(Human)
SwissProt	P01912(Human)

*AREX continuously optimizes our products. Webpage content may not reflect the latest updates. For inquiries, please contact info@arexbio.com or your local distributor.

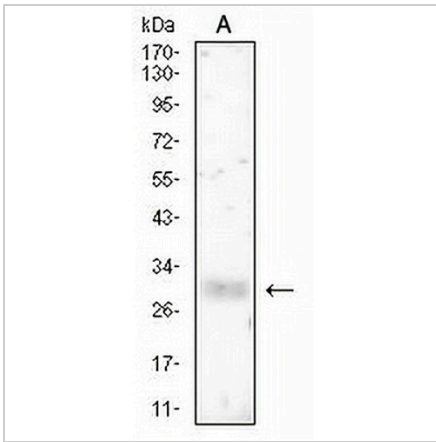
*Clone Number, Reactivity, Source/Host and Clonality can be found in the product name and Key Features section above.

DATASHEET

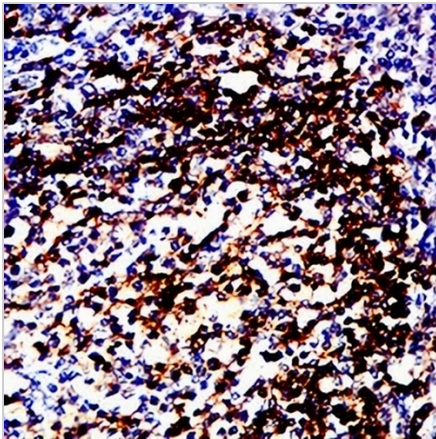
HLA-DRB1 Mouse Monoclonal Antibody(C2745)

CAT. NO. AMA02357

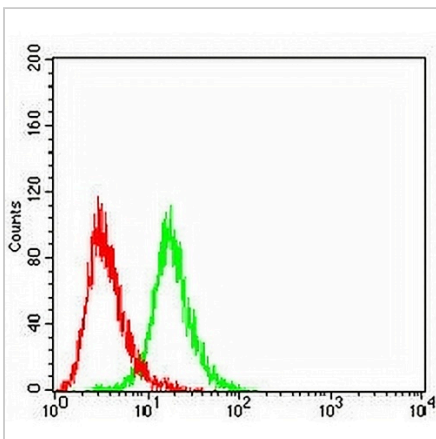
DATA



Western blot analysis of HLA-DRB1 expression in Raji (A) whole cell lysates. (Predicted band size: 30 kD; Observed band size: 30 kD)



Immunohistochemical analysis of HLA-DRB1 staining in human tonsil formalin fixed paraffin embedded tissue section. The section was pre-treated using heat mediated antigen retrieval with sodium citrate buffer (pH 6.0). The section was then incubated with the antibody at room temperature and detected using an HRP conjugated compact polymer system. DAB was used as the chromogen. The section was then counterstained with haematoxylin and mounted with DPX.



Flow cytometric analysis of Raji cells using Anti-HLA-DRB1 Antibody (green) and negative control (red).

STORAGE

Store at 4°C short term. For long term storage, store at -20°C, avoiding freeze/thaw cycles.

NOTE

For Research Use Only. Not for diagnostic, therapeutics, prophylactic or in vivo use.