

**DATASHEET**

**HLA-F Mouse Monoclonal Antibody(C2746)**

CAT. NO. AMA02358

**KEY FEATURES**

Target	HLA-F	Source / Host	Mouse
Reactivity	Human, Mouse, Rat	Clonality	Monoclonal
Applications	WB, FC	Conjugation	Unconjugated
Form / Buffer	Mouse IgG2b. Liquid in PBS, pH 7.3, 30% glycerol, and 0.01% sodium azide.	Storage	at-20°C

**BACKGROUND**

Non-classical major histocompatibility class Ib molecule postulated to play a role in immune surveillance, immune tolerance and inflammation. Functions in two forms, as a heterotrimeric complex with B2M/beta-2 microglobulin and a peptide (peptide-bound HLA-F-B2M) and as an open conformer (OC) devoid of peptide and B2M (peptide-free OC). In complex with B2M, presents non-canonical self-peptides carrying post-translational modifications, particularly phosphorylated self-peptides. Peptide-bound HLA-F-B2M acts as a ligand for LILRB1 inhibitory receptor, a major player in maternal-fetal tolerance. Peptide-free OC acts as a ligand for KIR3DS1 and KIR3DL2 receptors and as an open conformer (OC) devoid of peptide and B2M (peptide-free OC).

**APPLICATION**

To ensure optimal assay performance, AREX recommends conducting reagent titration tailored to each testing system for optimal detection results.

WB	1:500 - 1:1000
FC	1:100 - 1:200

\*Results are sample-specific. Please refer to your local assay conditions and test parameters for reference.

**PRODUCT OVERVIEW**

Description	Mouse monoclonal to HLA-F
Specificity	Recognizes endogenous levels of HLA-F protein
Antibody Type	Primary antibody
Immunogen	Recombinant fusion protein of human HLA-F expressed in E. Coli
Purification	This antibody is purified through a protein G column.
Molecular Weight	Predicted: 39 kD; Observed: 46 kD
Form/Buffer	Mouse IgG2b. Liquid in PBS, pH 7.3, 30% glycerol, and 0.01% sodium azide.
Alternative Names	HLA-5.4; HLAF; HLA class I histocompatibility antigen, alpha chain F; CDA12; HLA F antigen; Leukocyte antigen F; MHC class I antigen F
Gene Symbol	HLA-F
Entrez Gene	3134(Human)
SwissProt	P30511(Human)

\*AREX continuously optimizes our products. Webpage content may not reflect the latest updates. For inquiries, please contact [info@arexbio.com](mailto:info@arexbio.com) or your local distributor.

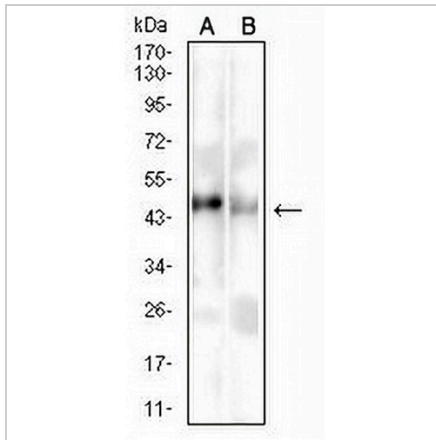
\*Clone Number, Reactivity, Source/Host and Clonality can be found in the product name and Key Features section above.

**DATASHEET**

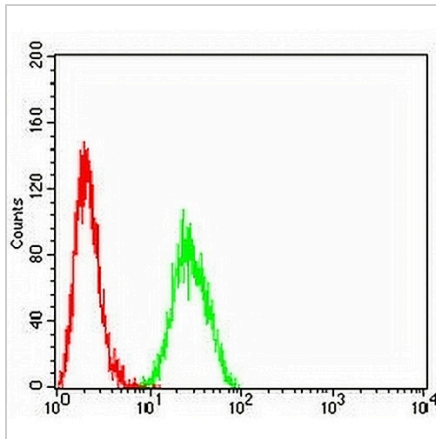
**HLA-F Mouse Monoclonal Antibody(C2746)**

CAT. NO. AMA02358

**DATA**



Western blot analysis of HLA-F expression in mouse liver (A), rat liver (B) whole cell lysates. (Predicted band size: 39 kD; Observed band size: 46 kD)



Flow cytometric analysis of THP1 cells using Anti-HLA-F Antibody (green) and negative control (red).

**STORAGE**

Store at 4°C short term. For long term storage, store at -20°C, avoiding freeze/thaw cycles.

**NOTE**

For Research Use Only. Not for diagnostic, therapeutics, prophylactic or in vivo use.