

DATASHEET

HNF1 beta Mouse Monoclonal Antibody(C2747)

CAT. NO. AMA02359

KEY FEATURES

Target	HNF1 beta	Source / Host	Mouse
Reactivity	Human, Mouse, Rat	Clonality	Monoclonal
Applications	WB, IHC, IF/ICC, FC	Conjugation	Unconjugated
Form / Buffer	Mouse IgG2a. Liquid in PBS, pH 7.3, 30% glycerol, and 0.01% sodium azide.	Storage	at-20°C

BACKGROUND

Transcription factor that binds to the inverted palindrome 5'-GTTAATNATTAAC-3' . Binds to the FPC element in the cAMP regulatory unit of the PLAU gene . Transcriptional activity is increased by coactivator PCBD1 .

APPLICATION

To ensure optimal assay performance, AREX recommends conducting reagent titration tailored to each testing system for optimal detection results.

WB	1:500 - 1:1000
IHC	1:100 - 1:500
IF/ICC	1:50 - 1:100
FC	1:100 - 1:200

*Results are sample-specific. Please refer to your local assay conditions and test parameters for reference.

PRODUCT OVERVIEW

Description	Mouse monoclonal to HNF1 beta
Specificity	Recognizes endogenous levels of HNF1 beta protein
Antibody Type	Primary antibody
Immunogen	Recombinant fusion protein of human HNF1 beta expressed in E. Coli
Purification	This antibody is purified through a protein G column.
Molecular Weight	Predicted: 61 kD; Observed: 70 kD
Form/Buffer	Mouse IgG2a. Liquid in PBS, pH 7.3, 30% glycerol, and 0.01% sodium azide.
Alternative Names	TCF2; Hepatocyte nuclear factor 1-beta; HNF-1-beta; HNF-1B; Homeoprotein LFB3; Transcription factor 2; TCF-2; Variant hepatIC, nuclear factor 1; vHNF1
Gene Symbol	HNF1B
Entrez Gene	6928(Human); 21410(Mouse); 25640(Rat)
SwissProt	P35680(Human); P27889(Mouse); P23899(Rat)

*AREX continuously optimizes our products. Webpage content may not reflect the latest updates. For inquiries, please contact info@arexbio.com or your local distributor.

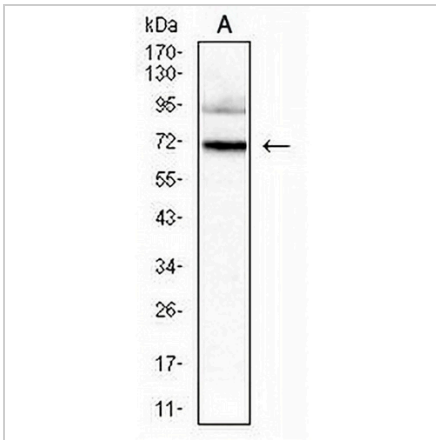
*Clone Number, Reactivity, Source/Host and Clonality can be found in the product name and Key Features section above.

DATASHEET

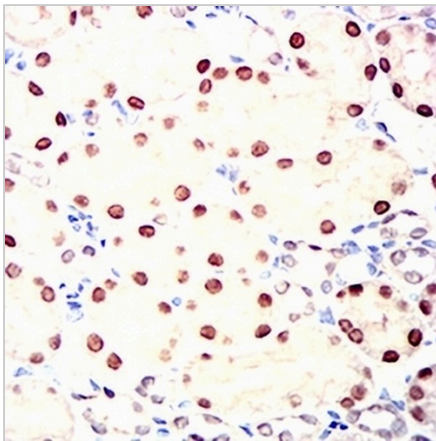
HNF1 beta Mouse Monoclonal Antibody(C2747)

CAT. NO. AMA02359

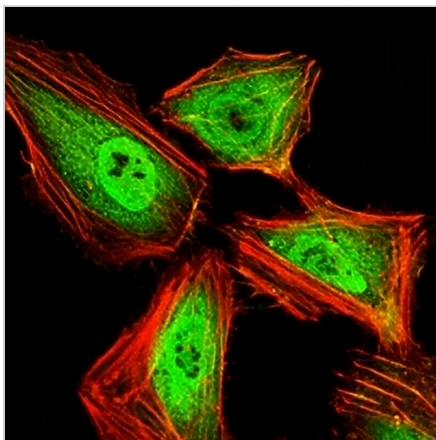
DATA



Western blot analysis of HNF1 beta expression in HeLa (A) whole cell lysates. (Predicted band size: 61 kD; Observed band size: 70 kD)



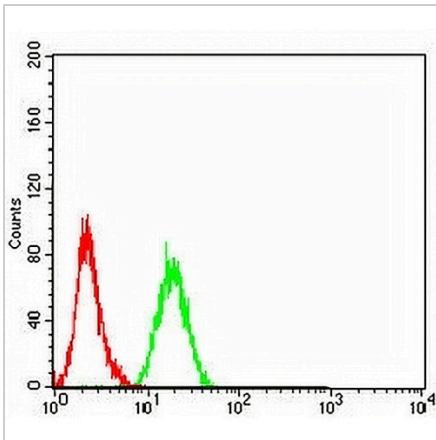
Immunohistochemical analysis of HNF1 beta staining in rat kidney formalin fixed paraffin embedded tissue section. The section was pre-treated using heat mediated antigen retrieval with sodium citrate buffer (pH 6.0). The section was then incubated with the antibody at room temperature and detected using an HRP conjugated compact polymer system. DAB was used as the chromogen. The section was then counterstained with haematoxylin and mounted with DPX.



Immunofluorescent analysis of HNF1 beta staining in HeLa cells. Formalin-fixed cells were permeabilized with 0.1% Triton X-100 in TBS for 5-10 minutes and blocked with 3% BSA-PBS for 30 minutes at room temperature. Cells were probed with the primary antibody in 3% BSA-PBS and incubated overnight at 4 °C in a humidified chamber. Cells were washed with PBST and incubated with an AREX® Fluor 488 -conjugated secondary antibody (green) in PBS at room temperature in the dark. Phalloidin - AREX® Fluor 594 was used to stain Actin filaments (red). DAPI was used to stain the cell nuclei (blue).

DATASHEET**HNF1 beta Mouse Monoclonal Antibody(C2747)**

CAT. NO. AMA02359

DATA (CONTINUED)

Flow cytometric analysis of PC3 cells using Anti-HNF1 beta Antibody (green) and negative control (red).

STORAGE

Store at 4°C short term. For long term storage, store at -20°C, avoiding freeze/thaw cycles.

NOTE

For Research Use Only. Not for diagnostic, therapeutics, prophylactic or in vivo use.