

DATASHEET

OMI Mouse Monoclonal Antibody(C2756)

CAT. NO. AMA02368

KEY FEATURES

Target	OMI	Source / Host	Mouse
Reactivity	Human, Mouse, Rat	Clonality	Monoclonal
Applications	WB, IHC, FC	Conjugation	Unconjugated
Form / Buffer	Mouse IgG1. Liquid in PBS, pH 7.3, 30% glycerol, and 0.01% sodium azide.	Storage	at-20°C

BACKGROUND

Serine protease that shows proteolytic activity against a non-specific substrate beta-casein . Promotes apoptosis by either relieving the inhibition of BIRC proteins on caspases, leading to an increase in caspase activity; or by a BIRC inhibition-independent, caspase-independent and serine protease activity-dependent mechanism . Cleaves BIRC6 and relieves its inhibition on CASP3, CASP7 and CASP9, but it is also prone to inhibition by BIRC6 . Cleaves THAP5 and promotes its degradation during apoptosis .

APPLICATION

To ensure optimal assay performance, AREX recommends conducting reagent titration tailored to each testing system for optimal detection results.

WB	1:500 - 1:1000
IHC	1:100 - 1:500
FC	1:100 - 1:200

*Results are sample-specific. Please refer to your local assay conditions and test parameters for reference.

PRODUCT OVERVIEW

Description	Mouse monoclonal to OMI
Specificity	Recognizes endogenous levels of OMI protein
Antibody Type	Primary antibody
Immunogen	Recombinant fusion protein of human OMI expressed in E. Coli
Purification	This antibody is purified through a protein G column.
Molecular Weight	Predicted: 49 kD; Observed: 34 kD kD
Form/Buffer	Mouse IgG1. Liquid in PBS, pH 7.3, 30% glycerol, and 0.01% sodium azide.
Alternative Names	OMI; PRSS25; Serine protease HTRA2, mitochondrial; High temperature requirement protein A2; HtrA2; Omi stress-regulated endoprotease; Serine protease 25; Serine proteinase OMI
Gene Symbol	HTRA2
Entrez Gene	27429(Human); 64704(Mouse); 297376(Rat)
SwissProt	O43464(Human); Q9JIY5(Mouse); B0BNB9(Rat)

*AREX continuously optimizes our products. Webpage content may not reflect the latest updates. For inquiries, please contact info@arexbio.com or your local distributor.

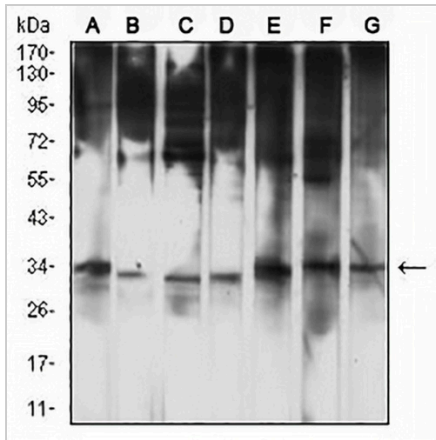
*Clone Number, Reactivity, Source/Host and Clonality can be found in the product name and Key Features section above.

DATASHEET

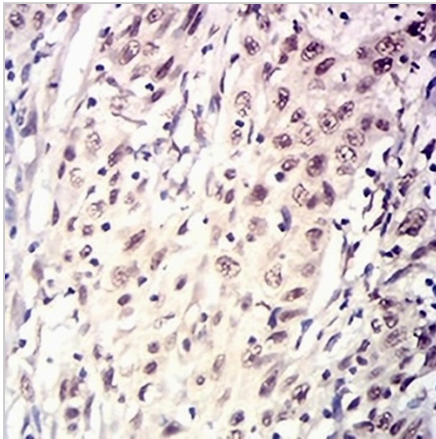
OMI Mouse Monoclonal Antibody(C2756)

CAT. NO. AMA02368

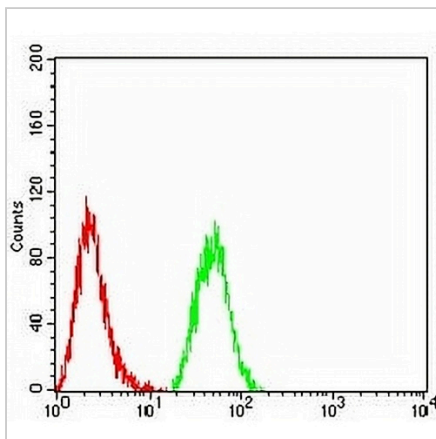
DATA



Western blot analysis of OMI expression in HL60 (A), HepG2 (B), MCF7 (C), HeLa (D), PC12 (E), C2C12 (F), Raji (G) whole cell lysates. (Predicted band size: 49 kD; Observed band size: 34 kD)



Immunohistochemical analysis of OMI staining in human esophageal cancer formalin fixed paraffin embedded tissue section. The section was pre-treated using heat mediated antigen retrieval with sodium citrate buffer (pH 6.0). The section was then incubated with the antibody at room temperature and detected using an HRP conjugated compact polymer system. DAB was used as the chromogen. The section was then counterstained with haematoxylin and mounted with DPX.



Flow cytometric analysis of HeLa cells using Anti-OMI Antibody (green) and negative control (red).

STORAGE

Store at 4°C short term. For long term storage, store at -20°C, avoiding freeze/thaw cycles.

NOTE

For Research Use Only. Not for diagnostic, therapeutics, prophylactic or in vivo use.